

CHRISTMAS IN
COLOUR

**SEASONAL
SLIDERS**

**NEW
EXCLUSIVE
FROM TRIMCRAFT**



OVER
£1200
worth of
prizes!



CHRISTMAS 2016 - £4.95



WARNERS
GROUP PUBLICATIONS

Making Cards

Britain's best value card making magazine

74
DETAILED
CHRISTMAS
CARD PROJECTS!

EXCLUSIVE PROJECTS
WITH NEAT & TANGLED
JOANNA SHEEN
HELZ CUPPLEDITCH
CRAFTERS COMPANION



DIGITAL DOWNLOADS

TIME SAVING TECHNIQUES
FOR THE FESTIVE SEASON

**PLAY
WITH NEW
LUSCIOUS PIGMENT
POWDERS**



Snow on trend...

BRAND NEW PRODUCTS



DESIGNS WITH A DIFFERENCE



EXCLUSIVE PROJECTS



BONUS 'CHRISTMAS SPECIAL' PROJECTS ★ EXCLUSIVE INTERVIEW WITH DEAN WILSON ★ WIN A TODO!



HOCHANDA

HOME OF CRAFTS HOBBIES AND ARTS

HOME OF YOUR FAVOURITE BRANDS

FREEVIEW 85 (24/7)

FREESAT 817 (24/7)

SKY 663 (24/7)

Debbie
HORE



Leonie
Pujol



SIXPENNY

PowerTex

SPECTRUM noir™

THE UK's
INSPIRATIONAL
CRAFT TV CHANNEL



STAMP
ENDOUS

Claritys

Sizzix



Crafter's
Companion

Stamps
by Chloe

Die'sire
BY CRAFTER'S COMPANION

Lapdog



TUNE IN TODAY...
OR WATCH ONLINE AT
WWW.HOCHANDA.COM

FAVOURITE
BRANDS



Editor:

Sally Jarvis

t: 01778 392433

e: sally.jarvis@warnersgroup.co.uk

WHAT, FOR YOU, IS THE BEST THING ABOUT CHRISTMAS?

FOR ME IT IS ABOUT ENJOYING TIME AT HOME AS I'M OFTEN SO BUSY OUT AND ABOUT.

**Project Editor:**

Joanne Garwell

t: 01778 391168

e: joanne.garwell@warnersgroup.co.uk

SEEING MY LITTLES ONES FACES LIGHT UP WHEN THEY RUN DOWNSTAIRS IN THE MORNING, SEEING THAT SANTA HAS BEEN... PLUS ALL OF THE FOOD!!

**Advertising Manager:**

Melanie Batterbee

t: 01779 963694

e: melanie.batterbee@warnersgoup.co.uk

SEEING THE KIDS FACES!

**Marketing Executive:**

Clowance Lawton

t: 01778 391177

e: clowance.lawton@warnersgroup.co.uk

ENJOYING HOMEMADE MINCE PIES IN FRONT OF A LOG FIRE WITH LOVED ONES.

**Senior Designer:**

Ryan Housden

t: 01778 391112

e: ryanh@warnersgroup.co.uk

WATCHING THE KIDS GET EXCITED ABOUT FATHER CHRISTMAS COMING AND CATCHING UP WITH FAMILY AND FRIENDS.

**Photography:**

Brett Caines

t: 01778 391173

e: brett.caines@warnersgroup.co.uk

BEING AROUND THE CHILDREN AS THEY GET MORE AND MORE EXCITED ABOUT FATHER CHRISTMAS VISITING. ALSO GENERALLY PUTTING MY FEET UP IN FRONT OF THE COAL FIRE ONCE THE CHRISTMAS DINNER HAS BEEN DEMOLISHED.

**Publisher:**

Lucie Dawson

t: 01778 392061

e: lucie.dawson@warnersgroup.co.uk

I LIKE ALL THE GOOD CHEER AND FRIENDLINESS THAT GOES WITH THE SEASON.

**Publishing Coordinator:**

Aveen Oke

t: 01778 392459

e: aaveeno@warnersgroup.co.uk

THE BEST THING ABOUT CHRISTMAS... ALL OF IT! FROM PUTTING THE CHRISTMAS TREE UP ON THE FIRST WEEKEND IN DECEMBER AND BUYING GIFTS FOR FRIENDS AND FAMILY TO WATCHING LOVE ACTUALLY 3 WEEKS BEFORE CHRISTMAS AND HAVING AN EXCUSE TO EAT LOTS OF DELICIOUS FOOD. LOVE IT ALL!

Subscriptions, reader offers and back issues:

t: 01778 395171 e: makingcards@warnersgroup.co.uk

Turn to p49 for the latest offers**Making Cards is published by:**

Warners Group Publications PLC, The Maltings, West Street, Bourne, Lincolnshire PE10 9PH

Printed by: Warners Midlands PLC, Martin Harris, t: 01778 391000

HELLO

and welcome to the CHRISTMAS EDITION 2016 of

Making Cards

What card to talk about first? Such a difficult decision! Here goes... Included in this edition are fabulous light-up cards (I'm a sucker for a fairy light) using docraft's new seasonal Festive Fauna collection, quick cards featuring a wonderful digi reindeer, absolutely stunning cards using the new silhouette stamps by Dina Kowal for Impression Obsession (really, really pretty!), lovely card maker Clare Curd using the new Craftwork Cards Peppermint Forest collection, super slider cards using adorable Lawn Fawn stamps and so much more... phew!

On top of this we've teamed up with your favourite brands to bring you exclusive content using their brand new releases - turn to page 18 to find three cards using the new Edge'ables from Crafters Companion, page 16 for a terrific trapeze fold card using the new Dear Santa collection by Helz Cuppleditch from Trimcraft and we introduce Neat and Tangled CAS style cards just for Making Cards readers on page 12.

Many of you fell in love with the Hog Heaven stamp set by MFT so we've brought it back, but different, this time in three cards by Faye allowing you to make the most of your purchase in our Get Crafty With Your Craft Stash feature. This is just one of two non-Christmas projects, as we know that other occasions still pass, the other being Clare Brown's great Cityscape cards that are bound to be up your street!

Lastly, please join me in welcoming new contributor Janet Machon to the team. You'll find her project on page 49.

Happy crafting!

Sally Jarvis, Editor



CRATE PAPER - CUTE GIRL - PAPER TASSELS, £3.99
LAUNCHED A COUPLE OF MONTHS AGO, I'VE ONLY JUST NOTICED THESE PAPER TASSELS, PART OF THE NEW CUTE GIRL COLLECTION BY CRATE PAPER. SOMETHING DIFFERENT!
WWW.HEYLITTLEMAGPIE.CO.UK
(01925 244460)



What have we been up to?

Did you enjoy the exclusive programme we recorded for you last month with Suzie Candlin and Cricut? We're going to be producing more of this exclusive content for you over the coming months, well Brett will be producing it. Here he is sitting putting it all together with his three screens! Watch out for more video content coming soon!

Making Cards is published 13 times a year, every four weeks. The views expressed by contributors are not necessarily those of the editor or publisher. Every care is taken to ensure that the content of the magazine is accurate; however the editor nor publisher assumes no responsibility for omissions or errors. The editor reserves the right to edit copy. All the material published remains the copyright of the publisher. No part of this magazine may be published, reproduced, copied or stored in a retrieval system without the prior permission in writing of the publisher. No commercial exploitation is permitted. Tutorials and projects are for the reader's use only.

While reasonable care is taken when accepting advertisements, the publisher cannot accept responsibility for any resulting unsatisfactory transactions. No warranty is implied in respect of any product mentioned herewith. The Advertising Standards Authority exists to regulate the content of advertisements. Tel: 020 7429 2222. Prizes, gifts or give aways offered in competitions might be substituted with ones of similar value. Unless otherwise stated, all competitions, free samplings, discounts and offers are only available to readers in the United Kingdom. ISSN 1740-8180
© Warners Group Publications PLC 2016

CONTENTS CHRISTMAS EDITION 2016



16

37



58



80



EXCLUSIVE PROJECTS...

09 Angel delights

Tracy uses the new Luscious Pigment Powders from IndigoBlu for perfect shimmer on these Christmas cards with their Peace on Earth stamp set!

12 Christmas cuties

We were so excited when Danielle, the brains behind wonderful brand, Neat & Tangled, wanted to get a collection of cards made just for us! Turn to page 12 to find out what Elena made using her latest designs.

14 Super shapes

We know that most of you absolutely love the art produced by Craftwork Cards, so we asked Clare Curd to use Peppermint Forrest, the latest release, in three cards.

16 Terrific trapeze fold

Fed up of square cards? Love the work of Helz Cuppleditch? If the answer is yes to either of these questions you must turn to page 16!

18 Exciting Edge'ables

New for Christmas 2016, Julie Woolston has designed three card projects, exclusively for Making Cards on behalf of popular Crafters Companion.

22 Jingles the digital reindeer

Jingles is there for you courtesy of the clever illustrators at Pink Gem Designs. View the selection of designs in these four cards by Marianne Fisher.

25 Stylish silhouettes

Simple, stylish silhouettes on colourful watercolour backgrounds – just take a look for yourself to be astounded.

32 No peeking

How adorable? Find out who is peeking out from these festive makes by Tracy Wray on page 32!

37 Inspiration for your FREE Making Cards Craft Paper Collections

Our guide to cards you can make using your three free craft paper sets.



34 Make gnome mistake, it's Christmas!

Emma Williams shares her wonderful designs in these quality cards this Christmas.

49 Seasonal sliders

The latest Lawn Fawn stamps are used to create great super seasonal sliders in these kinetic cards by Janet Machon (yes, mum to contributor Jeni Machon!).

52 Made for Men: Sending a stamped noel

Michelle Johnson uses the new Noel Tag stamp by Woodware to make Christmas cards suited to sending to men.

54 Get Crafty: Hog Heaven

CAS cards using the same stamps featured last month in Little piggies by Kelly Lloyd but in very different designs to provide you with more inspiration offering value for your crafty purchases.

58 Feeling festive

Back with her second project for Making Cards, Deb Steele makes more traditional cards in traditional colours.



Contact us...

-  sally.jarvis@warnersgroup.co.uk
-  www.makingcardsmagazine.com
-  Making Cards, Warners Group Publications, The Maltings, West Street, Bourne, Lincolnshire, PE10 9PH

Share your work...

-  www.facebook.com/makingcards
-  www.twitter.com/makingcards
-  www.pinterest.com/makingcardsmag/

Craft box basics

In addition to the 'What do I need?' lists displayed with every project in this magazine, you will also require craft box basics, basic items such as scissors, pencil, ruler, PVA glue, glue pen/dots, double-sided tape and foam pads etc.

EVERY ISSUE...

63 Designs with a difference: Time to shine

Sarah Jackman Read has not only used the pretty new Festive Fauna collection by docrafts but inserted a string of small white LED fairy lights into the designs for the wow factor.

68 Detailed decorations

Christmas cards in pink – believe us it works in these stunning detailed designs featuring Christmas baubles.

71 Cityscapes on different shapes

Non-Christmas cards from Clare Brown that can be used for many occasions.

76 Make in minutes: Quick sentiments

Quick cards to send sentiments with love this Christmas by Francesca with modern elements.

80 The night before Christmas

Vintage designs by Wendy Martin using the free craft papers that come with the Making Cards Christmas Special 2016 edition! Also provided in digital format so you can make as many of these cards as you like!

06 New to you

The latest new products from the world of card making!

20 New to you EXTRA

With so many launches this month we've double our feature to enable us to share more with you!

24 HUGE competition

Win a TODO courtesy of Create and Craft!

29 Prizes for you

Check out how to be in with a chance of winning some great prizes to bulk up your craft stash including Whimsy paper pads designs by Making Cards contributor Tracy Wray!

36 Handpicked

Céline Lauvie sent in this pretty Christmas card which deserved the spotlight this month!

47 Inside your next issue

We show a sneak peek at some of the fabulous cards that are to be included in your November 2016 edition!

56 Dear Making Cards

Put your feet up, make yourself a cuppa and take five minutes to read these lovely letters from our readers.

66 Your cards

We share some of the super cards sent in by Making Cards readers using the free craft papers and other materials.

70 5 Mins With... Dean Wilson

We take time out to chat to Create and Craft presenter Dean Wilson.

FREE WITH A SUBSCRIPTION



Turn to page 30 for details...

NEW TO YOU

Check out the latest news and products from the world of craft and cardmaking.

Love for Lawn Fawn!

Popular Lawn Fawn has announced new products for the winter including Winter Big Scripty Words, Cheery Christmas and Winter Unicorn stamps sets as well as a whole host of other fabulous stamp and die designs.

Lawn Fawn is available at most good craft shops including www.mymumscraftshop.co.uk



Simply Creative Christmas Cheer

Embrace the Christmas crafting season with Simply Creative's paper pad collection:

- ★ Each page of **Christmas Cheer** is decorated with traditional Christmas illustrations including sleighs, florals, and holly as well as striped, tartan and polka dot patterned sheets.
- ★ **Frosted Winter** encapsulates the beauty of nature at Christmas in its array of icy blue and grey designs, festive illustrations of reindeer and Christmas trees alongside intricate repeat patterns of snowflakes and stripes.
- ★ The Scandinavian chic designs in **Deck the Hall** is Nordic inspired with repeat patterns of snowflakes, hearts, reindeer and much more!
- ★ The brightly coloured papers in **Jingle Bells** are adorned with quirky repeat patterns of toy soldiers, gingerbread men, Christmas decorations, trees, bells and more. To complement these cheerful designs, you will also find patterned sheets including candy striped and polka dot papers perfect for layering.



Create-a-Card Christmas dies and sentiment

The new Create-a-Card die collection from Die'sire is dual concept, as it features both decorative card front designs and Cut In-style sentiments so you can mix and match. The card front designs, £19.99, do not cut around the outside edge, so you can line them up with your folded card blanks to cut beautifully detailed aperture cards, while the Cut In-style sentiments, £7.99, can be cut directly into your card front or mounted as panels. The dies work perfectly as stand-alone designs, but they also co-ordinate beautifully with each other to give stunningly intricate results every time! There are six different dies in the range and six different sentiments to choose from!

Visit www.crafterscompanion.co.uk to view the full range.



So scenic

The new Scenic Winter collection from Sheena Douglass is now available! This beautiful collection features stunning festive scenes that can create a layered effect when using different dies together. There are 8 different dies and four different stamps to choose from as part of the Perfect Partners range with prices starting at just £6.99.

View the full collections at www.crafterscompanion.co.uk.



New Snow Kissed Collection

An exquisite blending of classic winter scenes depicting gentle snowfalls, candle lit windows, countryside sleigh rides mixed with a sprinkling of fun filled images of frosty snowmen, the new Snow Kissed collection by Heartfelt Creations delivers the perfect compilation of winter themed imagery for all of your Christmas and chilly season creations.

Visit www.heartfeltcreations.us to view the full collection.



Get Jolly

Deck your halls with bright lights and holiday cheer this year with Pebbles' new Christmas collection, Holly Jolly. Whimsical icons of Santa, reindeer, ornaments and holly are presented in a traditional colour palette of berry red and pine green with brilliant highlights of gold adding to the festive fun.

Visit www.pebblesinc.com to view this and other ranges from American Crafts.



A Christmas Wish

A magical new collection has arrived from Papermania. A Christmas Wish is a must-have range for those who love everything about this wonderful time of year. Robins, toys and candy canes are pictured on backdrops of traditional red, green and blue, with twinkling stars and fairy lights adding an enchanting feel. A friendly Father Christmas adorns the papers and smiles from cosy scenes in the die-cut sentiments and perforated postage stamps.

Available from all Papermania stockists. Visit www.docrafts.co.uk for your nearest store.



Get Festive

This stylish new collection from Papermania will tick all the boxes for fans of clean, contemporary styling. Festive Fauna is a Christmas-themed collection with a difference. It touches on every major craft trend, mixing a muted colour palette with natural textures and even satisfying the ongoing lust for geometrics. Stunning imagery of stags, robins, pine cones and fir trees with gorgeous pops of colour are perfect for Christmas craft projects, but guarantee Festive Fauna will remain a go-to collection throughout the winter too.

Available at your nearest docrafts stockist.



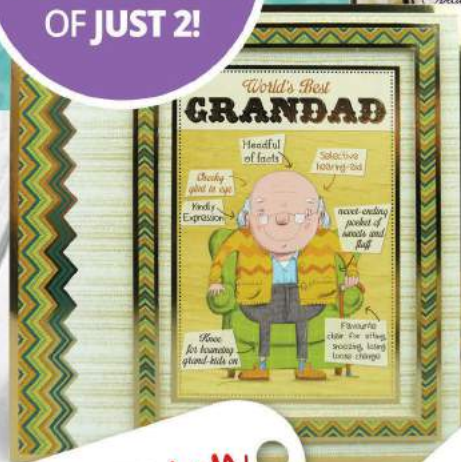


HUNKYDORY'S HUGE GIV£AWAY

Presenting one of our best ever deals! We are giving away 4 Luxury Card Collections for the price of 2, and you'll have all your cardmaking needs covered - from toddling tots, to tricky teens, as well as perfect imagery and themes for all the special men and women out there.

So grab your share of our Huge Giveaway now!

ALL 4
COLLECTIONS
FOR THE PRICE
OF JUST 2!



Little
DUDES



Perfect
Princesses



SUPERMen

Wonderful
women

HUGE VALUE

BUNDLE AVAILABLE WORTH
£111.90 FOR JUST £62.94!
CONTAINS ALL 4 COLLECTIONS,
ALL 4 SETS OF LUXURY INSERTS,
AND 2 BRILLIANT BRAND
NEW 'LITTLE BOOKS'!



See the full range at www.hunkydorycrafts.co.uk where you'll find a wonderful selection of co-ordinating items including 3 different Essential Books of Foiled Card, Luxury Foiled Acetate, and perfect Adorable Scorable Card selections.* *Whilst stocks last.

See our full range: www.hunkydorycrafts.co.uk

Connect with us





DESIGNED BY
TRACY EVANS

Angel delights

"These wonderful new Luscious pigment powders from IndigoBlu are fantastic and can be used in a wonderful array of techniques. The powders contain a binder and therefore can be used dry as a pigment or add water to create a paint! I love the shimmer on each of these cards and the Unicorn Sparkle is perfect for those Christmas Makes - plus don't you just love that name!" Tracy

Sparkle

1 Create a 16.5cm square white card blank with the fold at the top. Cut a second piece of white card to the same size and colour with Broken China ink. Adhere the panel to the card front.

2 Cut white card to 15.2 square. Ink the angel image with Watering Can ink and stamp onto the white card, towards the centre.

3 Mix Slap It On with some of the Luscious pigment powder (Picture A). Place the Vintage Frame stencil over the angel image and apply the mixture over the stencil using

a palette knife. Remove the stencil. Whilst the stencilling is still wet, apply some of the Unicorn Sparkle over the frame. Do not cover the entire frame, simply add a touch of shimmer so that some of the blue stencilling is still visible but some sparkle is also added to the background. Set aside to dry.

4 Dip a finger into the Slap It On/ Powder mix that is left and apply touches to the edges of the panel.

5 Place the Sparkle and Glisten stencil over the angel, towards the bottom of the image. Mix some more Slap It On with

the Luscious pigment powder, this time adding a little more of the powder to give a deeper colour tone. Apply the mix over the word 'sparkle'. Once dry, draw over the top of the lettering using a white gel pen to add highlights.

6 Press the Broken China inkpads directly onto a non-stick craft sheet. Pick up some of the ink with a waterbrush, then add some of the colour around the 'sparkle' wording to create shading. Repeat this process to colour the angel. Colour the angel's face, hair and hands with pencils or crayons.

What do I need?

For all cards

- ☐ White card
- ☐ Silver mirri card
- ☐ Peace on Earth stamp set, Super Thick Slap It On and Blue Luscious pigment powder by IndigoBlu
- ☐ Broken China Distress inkpads
- ☐ Watering Can Archival inkpads
- ☐ Titanium White Acrylic Media Fluid by DecoArt
- ☐ Sequins
- ☐ Pencils or crayons

Sparkle

All items above plus:

- ☐ 6x6 Sparkle and Glisten stencil, 6x6 Stencil Vintage Frame, 6x6 Stencil Stars stencil and Unicorn Sparkle by IndigoBlu
- ☐ Acetate
- ☐ White gel pen

Top tip

If the paint goes dry, spritz lightly over your project with water which will re-activate the binder.



7 Paint a thin layer of Slap It On to the angel wings and to the base of the angel. Sprinkle Unicorn Sparkle lightly over the image, tip off the excess and return to the pot. Allow to dry.

8 Place the Stars stencil over the centre of the panel. Dab Broken China ink randomly over the stencil.

9 Apply Broken China ink directly to a piece of recycled packaging or acetate, spritz with water and press the inked plastic onto the background of the

panel, smooching the ink directly where you want it with your fingers. Dry with a heat tool.

10 Add a small amount of Titanium White paint to a non-stick craft sheet, dip a wet paintbrush into the paint and lightly flick over the panel. Dry with a heat tool. Stick some sequins to the background for added sparkle.

11 Mount the panel onto silver mirri card, leaving a thin border along each side. Fix to the centre of the card front.



Peace on earth

1 Create an 11.4x16.5cm white card blank with the fold at the top. Cut a second piece of white card the same size and colour with Broken China ink. Fix to the card front.

2 Cut white card to 10x15.2cm. Ink the angel with Watering Can ink and stamp directly onto the card. Stamp the angel once again, this time onto a piece of scrap paper. Cut out to create a mask.

3 Add Slap It On directly to a non-stick craft sheet and sprinkle some Luscious pigment powder into it. Mix the two together thoroughly.

4 Place the mask created in Step 2 over the first image and position the star stencil on top of the mask. Dab the mixture over the stencil using a palette knife (Picture B), then remove the stencil to reveal the stars appearing behind the angel (Picture C).

What do I need?

Peace on Earth

All items at start plus:

- ☐ 6x6 Stencil Stars and Unicorn Sparkle by IndigoBlu
- ☐ Small Talk Occasions Stickers from the Idea-ology range by Tim Holtz
- ☐ Acetate

5 With the stars still wet, sprinkle some Unicorn Sparkle lightly over the stars, shake away the excess and set aside to dry. Colour the angel's face, hair and hands with pencils or crayons.

6 Apply Broken China ink directly to a piece of plastic or acetate and spritz with water. Place the inked plastic onto the card, smooching the ink over the background using your fingers. Repeat this process, adding ink around the card and dry with a heat tool.

7 Press the Broken China ink directly onto a non-stick craft sheet, pick up some of the ink with a waterbrush and colour the angel with the ink. Dry with a heat tool.

8 Apply some Slap It On directly to the wings and a touch at the base of the angel, applying with a paintbrush. Sprinkle more of the Unicorn Sparkle over the wet areas, tip off any excess and return to the pot. Allow to dry.



Why not try...

Decorating a photo frame with the powders for a wonderful gift idea.

9 Apply white paint to the edge of an old container and press the lid around the angel, acting as a spotlight.

10 Use Watering Can ink to stamp the sentiment inside the painted circle. Add a few sequins to the background for added shimmer.

11 Fix the 'peace on earth' sticker to the bottom left of the panel and add shading around it with a blue pencil or crayon.

12 Add a small amount of Titanium White paint to a non-stick craft sheet, dip a wet paintbrush into the paint and flick the paint lightly over the background. Dry with a heat tool.

13 Mount the decorated panel onto silver mirri card, leaving a narrow border around each side. Fix to the centre of the card front.

Step by steps



What do I need?

Glisten, snow, sparkle

All items at start plus:

☐ Glisten, snow, sparkle

5 Mix some more of the pigment powder with Slap It On and apply over the stencil to add words randomly to the panel. Adding more or less of the powder gives a lighter or darker appearance to each word. Set aside to dry.

Where can I buy it?

All inks and DecoArt Media Fluid Acrylics available from www.countryviewcrafts.co.uk (01767 262 304).

IndigoBlu products available from www.indigoblu.com.

Glisten, snow, sparkle

1 Create a 12.7x17.7cm white card blank with the fold at the top. Cut a second piece of white card to the same size and colour with Broken China ink. Fix to the card front.

2 Cut white card to measure 11.4x16.5cm. Ink the angel stamp with Watering Can ink and stamp in the bottom right of the white card. Colour the angel's face, hands and hair with pencils or crayons.

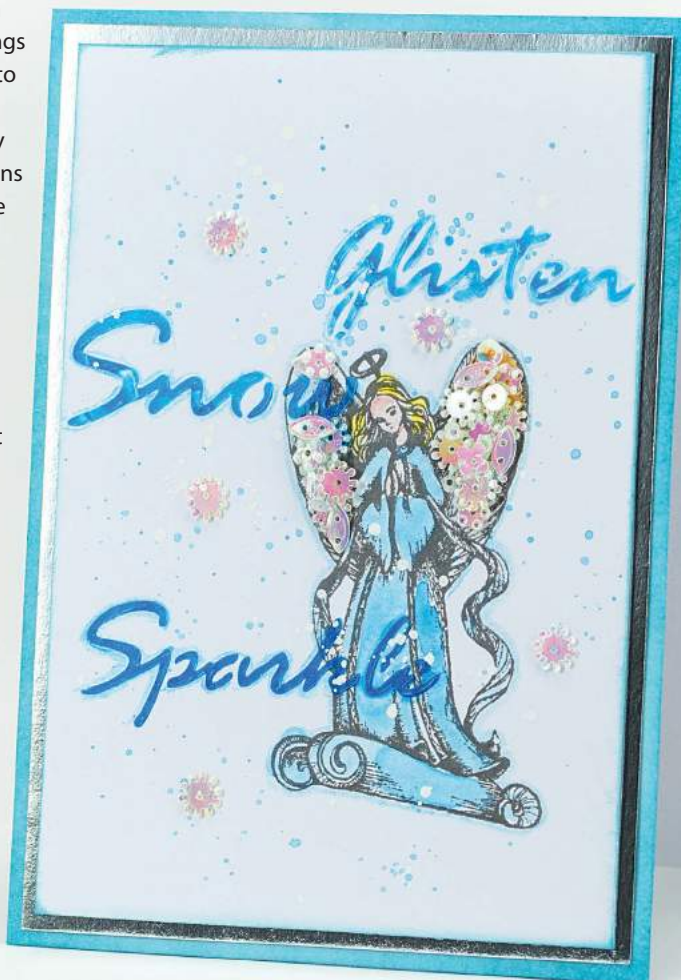
3 Add a small amount of Luscious pigment powder to a paint palette (Picture D) and mix the powder with a small amount of warm water as the powder mixes better with warm water (Picture E). Colour the angel with the paint and allow to dry.

4 Add delicate splatters of the paint over the panel using a paintbrush and dry with a heat tool. Add shading around the angel with a blue pencil or crayon.

6 Apply Slap It On to the angel wings and press sequins into it until each wing is covered. Allow to dry completely. Fix sequins randomly around the background of the panel to add further shimmer.

7 Add a small amount of Titanium White paint to a non-stick craft sheet, dip a wet paintbrush into the paint and lightly flick over the panel. Dry with a heat tool.

8 Mount the panel on silver mirri card, leaving a thin border along each side. Fix to the centre of the card front.





DESIGNED BY
ELENA ROUSSAKIS
FOR NEAT & TANGLED

Christmas cuties

BRAND
NEW
PRODUCTS

We teamed up with Neat & Tangled owner Danielle who commissioned this project exclusively for Making Cards readers using her latest designs.

What do I need?

For all cards

- ☐ White card
- ☐ Tuxedo Black Memento inkpad
- ☐ Sakura white gel pen

Holiday happiness

All items above plus:

- ☐ Red card
- ☐ Beary Merry stamp set and Santa's Wonderland stamp set by Neat & Tangled
- ☐ Stitched Rectangle Frames by Lawn Fawn

Holiday happiness

- 1** Die-cut the largest Stitched Rectangle Frame from red card and attach to the card front of a white card blank the same size.
- 2** Use black ink to stamp the snowman on the right-hand side of the card front. Stamp the snowman and his present again onto scrap paper and cut out to create a mask.



- 3** Stamp the penguin on the left-hand side of the card front, then stamp again on scrap paper. Cut out to create a mask. Put both masks in place on the card front.

- 4** Stamp the bear in between the penguin and snowman, then create a mask to mask his paws before stamping the mug. Remove all of the masks.

- 5** Stamp the greeting along the bottom of the card front with black ink. Colour the stamped images using the Copic guide below to help you.



wishing you
HOLIDAY HAPPINESS

Guide to Copic marker pens:

BEAR.....	E30, E31, E33
BEAR'S SCARF.....	YR03, YR67
PENGUIN.....	T1, T2, T4
PENGUIN'S HAT AND RED ACCESSORIES.....	R22, R24, R29
SNOWMAN'S HAT AND SCARF.....	BG000, BG23, R29
SANTA.....	E00, E02, R20, T8, Y18, R22, R24, R29
TREE.....	YR02, YR67, Y02, Y18
NORTH POLE SIGN.....	R22, R29, E40, E42
ELF AND PRESENTS.....	I00, R20, R22, R24, R29, E00, E02, E40, E42, YR02, YR67, E30, E33, E43

FIND
MORE
FREE
MAGAZINES

FREEMAGS.CC

Christmas

1 Die-cut the large Stripty Backdrop from red card and fix to the card front of a white card blank the same size.

2 Die-cut a large circle from white card and stamp Santa on the left using black ink. Also stamp the snowbank and the North Pole sign.

3 Colour the images using the Copic guide provided to help and fix to the centre of the card front with foam pads.

What do I need?

Christmas

All items at start plus:

- ☐ Red card
- ☐ Santa's Wonderland stamp set by Neat & Tangled
- ☐ Stripty Backdrop, Everyday Sentiment Banners and Large Stitched Circle Stackables by Lawn Fawn
- ☐ Falling Snow stencil by Simon Says Stamp
- ☐ White embossing paste by Wendy Vecchi

4 Using the Falling Snow stencil, apply embossing paste to the circle through the stencil, being careful not to get any on the images. Set aside to dry.

5 Stamp the sentiment on white card and die-cut with the Everyday Sentiment Banners die. Fix across the bottom right of the circle.



The nice list

1 Create a white card blank the same size as the two previous cards and cover the card front with checked paper from the paper pad.

2 Cut white card slightly smaller than the card front. Stamp the girl elf on the left-hand side of the white card, then again on scrap paper. Cut out to create a mask. Position the mask over the first image, then stamp the shelf and stocking.

3 Ink up the presents image, but wipe off the top of the highest present to make room for Santa to sit. Stamp the presents, then stamp Santa at the top of the tallest present. Use a Copic Multiliner pen to add back in any missing lines.



What do I need?

The nice list

All items at start plus:

- ☐ Perfectly Plaid Christmas collection and Large Stitched Rectangle Stackables by Lawn Fawn
- ☐ Elf and their Shelf stamp set by Neat & Tangled
- ☐ Copic Multiliner sp 0.3

4 Colour the images using the Copic guide provided to help.

5 Use black ink to stamp the sentiment on white card and die-cut using a Stitched Rectangle. Fix to the card front below the stamped image using foam pads.

Where can I buy it?

All items available from www.neatandtangled.com





DESIGNED BY
CLARE CURD

Super shapes

"I love experimenting with different colour schemes during the festive season. These pretty pastels aren't traditional Christmas colours but I think they have a winter wonderland look to them! Using different card shapes and die-cut hexagons adds a modern feel and breaks away from the norm." *Clare*

Snow globe

1 Select two snow globe card blanks. Cut one of the card blanks in half and cover one half with green paper from the Peppermint Forest paper pack. Cover the bottom section of it with pink dotted paper.

2 Add a length of distressed pink ribbon around the dotted pink paper, securing the ends at the back. Make a bow using the same ribbon and stick to the right-hand side of the first piece.

3 Use a craft knife to cut out the embossed circle to make an aperture. Cover the back of the aperture with acetate.

4 Using the cut-out circle as a template, draw a circle on tree paper and cut out. Layer in the centre of the second card blank. Add the circle die-cut car topper to the centre of the tree paper.

5 Add foam pads/tape around the outside of the acetate, making sure there are no gaps. Sprinkle glitter and sequins onto the centre of the die-cut circle. Attach the acetate layer over the top, lining up the edges. This creates your snow globe shaker.

6 Add the hexagon sentiment to the top left of the snow globe using foam pads. Finish by adding glitter glue around the edges of the greeting and the aperture.

What do I need?

For all cards

- ☐ Peppermint Forest paper pad collection by Craftwork Cards
- ☐ Starburst Stickles glitter glue

Snow globe

All items above plus:

- ☐ Snow globe card blank by Craftwork Cards
- ☐ 6mm Distressed Pink cotton ribbon
- ☐ Nuvo Diamond glitter by Tonic
- ☐ Acetate
- ☐ Sweetheart and Phosphorescence sequin mix by Neat and Tangled





Snowflakes

1 Create a 14.8cm square white card blank. Cut a frame from grey patterned paper using the largest and second largest hexagon dies. Fix to the centre of your card front.

2 Take the panel cut from Step 2 of the previous card and fix to the centre of the card front at an angle over the first frame, so they overlap slightly.

3 Take the die-cut Christmas greeting and ink the edges with Vintage Photo ink. Fix to the centre of the card front using foam pads.

4 Punch two larger snowflakes from white glitter card and two smaller snowflakes from blue card. Layer together and fix to the top left and bottom right of the layered hexagons as shown. Add adhesive gems to the corners of the middle hexagon and to the centre of each snowflake.

5 Wrap green organza ribbon around the left edge of the card front, tying in a bow at the top.

What do I need?

Snowflakes

All items at start plus:

- ☐ Nesting Hexagons die by Xcut
- ☐ Snowflake punches
- ☐ Green organza ribbon
- ☐ Large and small clear adhesive gems

Hexagon

1 Cover the hexagon card blank with hexagon patterned paper from the Peppermint Forest paper pack.

2 Lay the card blank flat and cut out the hexagon aperture with a craft knife, following the outline of the embossed area.

3 Die-cut a slightly larger hexagon from acetate using the second largest Xcut die. Fix to the back of the card front using foam pads.

4 Die-cut a hexagon using the largest die from pink dotted paper. Fix to the centre of the card inside so that it shows thorough the aperture.

5 Fix a die-cut hexagon card topper to the centre of the aperture using foam pads. Cut the car from a second die-cut and layer in place on top of the first car with foam pads.

6 Cut a frame from white card using the largest and second largest dies together. Fix around the outside of the aperture as shown using foam pads.

7 Make a bow with both distressed pink and white organza ribbon. Leave the tails of the bow quite long. Fix to the top left of the aperture, then twist the tails and stick down around the aperture and topper. Add the 'Noel' sentiment to the bow, dabbing Victorian Velvet ink along the edges.

8 Dab the same ink around a 'Happy Christmas' sentiment and fix to the bottom right of the aperture. Finish by adding gems to both sentiments.

What do I need?

Hexagon

All items at start plus:

- ☐ Hexagon card blank by Craftwork Cards
- ☐ 6mm Distressed Pink cotton ribbon
- ☐ 6mm White organza ribbon and A Year of Sentiments Collection by Clare Curd Crafts
- ☐ Clear adhesive gems
- ☐ Victorian Velvet Distress inkpad
- ☐ Nesting Hexagons die by Xcut

Where can I buy it?

Peppermint Forest Collection, snow globe and hexagon card blanks, distressed pink ribbon, Stickles glitter glue and A Year of Sentiments available from www.craftworkcards.co.uk (01132 877794).

Sequins available from www.neatandtangled.com.

Xcut hexagon dies available from www.docrafts.com.

White organza ribbon available from www.clarecurdcrafts.co.uk.





DESIGNED BY
MAXINE NORMAN
FOR TRIMCRAFT

Terrific trapeze fold

BRAND
NEW
PRODUCTS

Learn how to use Trimcraft's exclusive folding technique alongside the wonderful Helz Cuppleditch Dear Santa collection to create a fun and festive make this Christmas.



1 Open your 6x6 card blank and measure along the score line at 4cm and 5.5cm on the left-hand side and the right-hand side, ensuring to make a mark at each measurement.

2 From the marks you created on the left, score diagonal lines down to the bottom right corner. Score diagonal lines

from the marks on the right down to the bottom left-hand corner. Repeat on the back of the card blank.

3 Gently push the left and right sides of the card front inwards, so the inner score lines mountain fold and the outer score lines valley fold. Crease well to create your trapeze fold card blank.

4 Cut two 4x15cm strips of red snowflake paper from the paper pad. Cut these down to fit the sides of the card front. Stick each piece in place.

5 Cut a coordinating piece of paper to measure 15cm square and trim down to fit the centre panel. Stick in place.

6 To create a small frame, cut white card to 8.5x9cm and cover with red snowflake paper. Cut a 7cm square from the centre. Layer on an 8.5x9cm piece of gold star paper using foam pads. Wrap twine twice around the top of the frame, tying in a bow on the left. Fix to the centre panel of the card front at an angle.

7 Remove the decoupage pieces for the ice skating image and layer together using foam pads, curving the pieces slightly with your fingers to add dimension to each layer. Adhere the decoupage topper to the frame using foam pads.

8 Cut the ends of three garland flags and fix them along the top of the frame, inserting them behind the twine.

9 Cut the ends of two more garland flags and stick them to the top left corner of the card front.

10 Add one of the garland flags to the bottom of the card front, on the right-hand side. Adhere the 'Merry Christmas' sentiment to the left of the garland flag at the bottom of the card front.

11 Finish by adding adhesive gems to the top left and bottom right-hand corners of the card front.

What do I need?

- ☐ 6x6 white card blank by Dovecraft
- ☐ Red and silver twine
- ☐ 8x8 paper pack, decoupage pad, adhesive gems, sentiments and garland flags from the Helz Cuppleditch Dear Santa range for Trimcraft



Where can I buy it?

All items available from your local Trimcraft stockist.
Visit www.trimcraft.co.uk for find your nearest one.

SPECTRUM noir™

colorista™

A RANGE OF
**BLENDABLE
MARKERS & PENCILS**
USING THE FINEST
PAPER & CARD!
PRODUCTS INCLUDE
**GLITTER & FOIL
ACCENTS**



Available to buy from your local stockist or at
WWW.CRAFTERSCOMPANION.CO.UK

**AVAILABLE
NOW!**



DESIGNED BY
JULIE WOOLSTON
FOR CRAFTER'S
COMPANION

Exciting Edge'ables!

"If you love the look of intricate paper-cutting then these Edge'ables dies are for you! I love the range of different dies you can get for Christmas but also for other occasions too!" *Julie*

BRAND
NEW
PRODUCTS!

Reindeer

1 Create a 15cm square white card blank. Cut lilac dotted paper from the paper pad to 13.7cm square and layer on a 14.2cm square of silver mirri card. Fix to the centre of the card front.

2 Cut striped paper from the paper pad to measure 11.7cm square and mount on a 12.5cm square of silver mirri card. Fix to the centre of the dotted panel.

3 Use the Reindeer die to die-cut silver mirri card twice. Carefully trim the two reindeer away and attach them to the top of the card front at an angle using foam pads.

4 Use the Christmas Star to die-cut two stars from white card. Trim the stars away and carefully fix one to the top right corner of the card front and the other to the bottom left corner using foam pads each time.

5 Select your sentiment and stamp it on white card using Vibrant Lilac ink. Trim to 4.5x2.8cm and mount on silver mirri card measuring 5x3.8cm. Fix to the bottom right corner of the card front using foam pads.

What do I need?

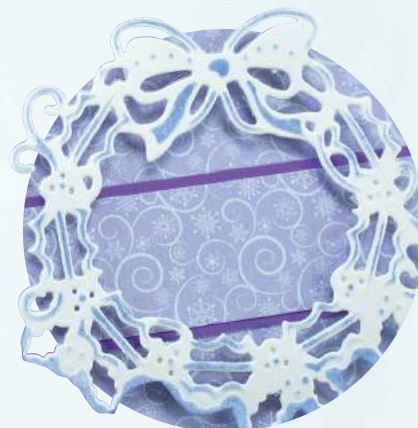
For all cards

- ☐ WW White card
- ☐ Signature Christmas Contemporary paper pad by Crafter's Companion
- ☐ Die-cutting machine
- ☐ Vibrant Lilac StazOn inkpad

Reindeer

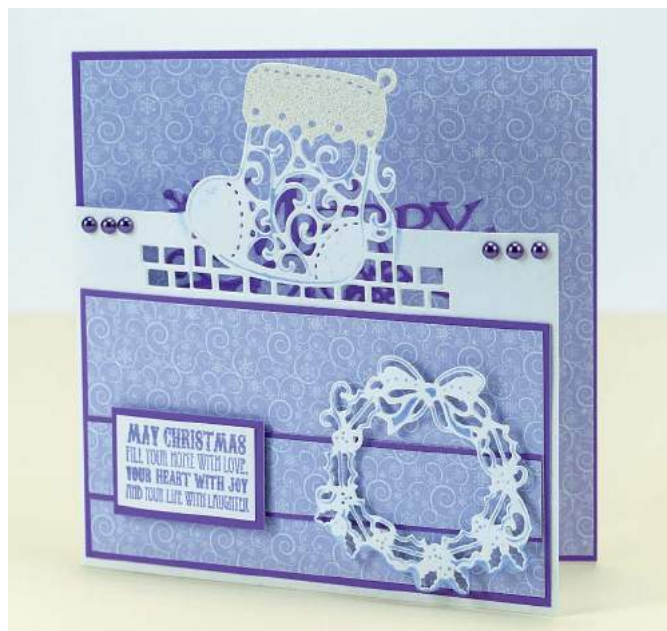
All items above plus:

- ☐ Silver mirri card
- ☐ Reindeer and Christmas Star Die'sire Christmas Edge'ables dies
- ☐ Friends and Family stamp set from the Vintage Christmas collection by Crafter's Companion



Where can I buy it?

All products available from
www.crafterscompanion.co.uk (01388 663251).



Stocking and wreath

- 1 Create a 15cm square white card blank.
- 2 Using the Festive Stocking die, place it at the top of the card front and die-cut along the top edge to create a shaped card front. Cut away the card where the cutting line ends on the die.

What do I need?

Stocking and wreath

All items at start plus:

- ☐ Purple card
- ☐ White glitter card
- ☐ Festive Stocking and Festive Wreath Die'sire Christmas Edge'ables dies
- ☐ Home for Christmas stamp set from the Vintage Christmas collection by Crafter's Companion
- ☐ Shaded Lilac Distress inkpad
- ☐ Purple adhesive pearls

- 3 Dab Shaded Lilac ink over the die-cut stocking, through the die before you take the card away from the die.
- 4 Cut a 14x7.5cm piece of lilac swirl paper and mount on purple card, leaving a thin border along each side. Fix to the bottom of the card front. Cut a 14x2cm strip from the same paper and mount on a 14x2.5cm strip of purple card. Fix across the panel on the card front just below centre.
- 5 Cut a 14.3cm square from the same lilac swirl paper and mount on a 14.7cm square of purple card. Attach to the centre of the card inside.
- 6 Use the Wreath die to die-cut white card. Carefully attach to the bottom left of the card front using foam pads.
- 7 Die-cut a stocking from white glitter card and trim away just the top section. Stick in place to the stocking on the card front.
- 8 Use Vibrant Lilac ink to stamp your sentiment on white card. Trim to 4.5x2.7cm and mount on purple card, leaving a thin border along each side. Fix to the left-hand side of the strip on the card front using foam pads. Finish by adding purple adhesive pearls to the top left and right edges of the card front.

Decorative tree

- 1 Cut white card to measure 12.5x29cm and position with the short sides at the top and bottom. Score horizontal lines 10cm, 20cm and 24.5cm from the top edge. Mountain fold the top and bottom score lines and valley fold the middle score line. Crease well to create your card blank.

What do I need?

Decorative tree

All items at start plus:

- ☐ Silver mirri card
- ☐ Bauble Trio and Decorative Tree Die'sire Christmas Edge'ables dies
- ☐ Home for Christmas stamp set from the Vintage Christmas collection by Crafter's Companion
- ☐ Shaded Lilac Distress inkpad
- ☐ Blue adhesive pearls

- 2 Place the Decorative Tree die on the first fold, placing the cutting edge of the die above the fold. Run it through your die-cutting machine to create a die-cut tree that stand up when the top score line is folded. Repeat to die-cut the Bauble Trio on the bottom fold, placing it in the same way with the cutting edge on the top of the fold line. The die-cut baubles will lift up when the score line is folded.
- 3 Dab Shaded Lilac ink over the die-cut tree and baubles.
- 4 Cut bauble paper from the paper pad to measure 12x6.8cm and mount on silver mirri card measuring 12.5x7.2cm. Attach to the card just below the die-cut tree. Cut a strip of the same paper measuring 12.5x1.7cm and layer on silver mirri card measuring 12.5x2cm. Fix across the bottom of the card below the die-cut baubles.
- 5 Stamp the sentiment on the same bauble paper using Vibrant Lilac ink. Trim to 5x1.5cm and mount on slightly larger silver mirri card. Fix to the top right of the bauble panel below the die-cut tree using foam pads.
- 6 Finish by adding blue adhesive pearls to the die-cut flowers around the tree and baubles and also to the top left and bottom right edges.



NEW TO YOU

Extra!

With so many new launches this month we just had to share as many as we could!

Illustrated Faith CHRISTmas by Bella Blvd

Celebrate the Saviour and His birth with The CHRISTmas collection, a sophisticated mix of black and white and colourful blends. Included in the collection is five double-sided patterned papers, one embellishment paper, coordinating cardstock stickers, washi stickers, paper pieces, 6x8" paper pad, tabbies, clear stamps, designer clips and gift tags. Plus, all new products including a 2x8" tip-ins paper pad with list prompts and quotes that fit perfectly for journaling Bible margins as well as card making.

CHRISTmas is available at www.heylittlemagpie.co.uk (01925 244460).



New products from Ranger!

Create one-of-kind Christmas cards and more with the new Dina Wakley Media and Dylusions Holiday Stamp and Stencil Sets! The Dylusions set, Dear Santa, includes a collection of festive clear stamps and phrases paired with a 2-in-1 stencil design: trees & Merry Christmas. The Dina Wakley Media set, Scribbly Vintage Holiday, includes more of your favourite scribbly designs along with a Christmas phrase and a reindeer stencil design. Also available this month are new Dylusions Holiday Colouring Sheets! Featuring 12 exclusive Dyan Reaveley Christmas designs printed on heavyweight matt card, each pad includes two each of six full page designs and four each of six half page designs.



Tim has also released two more awesome kits - Alcohol Ink & Distress Spray Stain. These kits are ideal for old and new crafters as each kit includes exactly what you need to get started and are packed full of products!

All new Ranger products are available from www.afth.co.uk (01423 873739).



New from The Hobby House

My Mums Craft Shop have just stocked the fabulous new Toppers from The Hobby House! Eight brand new Christmas toppers, new sentiment toppers & paper packs too.

Find them all at www.mymumscraftshop.co.uk (01305 459131)



Autumn mornings

The fabulous Autumn Morning range is a brand-new release brought to us by Sara Davies as part of her Signature Collection. Celebrating the colours of autumn in its gloriously golden, rust, forest green and chocolate tones, the paper crafting range features a selection of dies including ornate flourish and overlay designs. You'll also find embossing folders, 6x6" and 12x12" paper packs and authentic hessian included, perfect for all your seasonal papercraft projects from cards to gifts and items around the home.

Visit www.crafterscompanion.co.uk (01388 663251).



Snow & Cocoa

The beautiful new Snow & Cocoa collection from Crate Paper has just arrived and it's fab! This line is perfect for card making throughout the whole of winter, not just Christmas. Enjoy the festive delights of the winter season and capture winter adventures with icons of snowflakes, cheerful snowmen and cute trees. Send snowflake kisses in a pleasing palette of pretty pinks, frost blue and sunny yellow in beautiful cards with a host of coordinating, versatile embellishments.

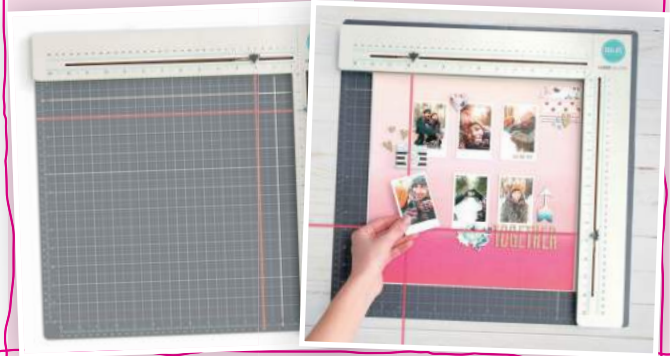
View the full collection at www.hey littlemagpie.co.uk (01925 244460).



Be square!

Quickly align, straighten and perfect any project with the new Laser Square from We R Memory Keepers. Perfect for card making, scrapbooking, stamping, quilting and more, work in inch and metric measurements in a straight line or at 90° angles.

Find out more at www.wermemorykeepers.com



Super Stamping Bella

Stamping Bella just keep producing the most wonderful stamps to colour. Now, you can purchase the corresponding dies for the images as well without breaking the bank! With new releases all the time, including this collection new for the Christmas season you'll find it hard to choose a favourite.

View the full collection at Stampingbella.com





DESIGNED BY
MARIANNE FISHER

Jingles the digital reindeer!

"I love using just the first page of digi kits and reducing the size to use them as toppers with pretty papers and embellishments. There are a number of ways to use them including simply printing out all the sheets, creating decoupage and attaching to a card blank." *Marianne*

What do I need?

For all cards

- ☐ Chambray and Lace paper pad by Craftwork Cards
- ☐ White card
- ☐ Computer and printer

Skating

All items above plus:

- ☐ Ice skating Jingles card topper digi kit by Pink Gem Designs
- ☐ Dark blue card
- ☐ White and aqua glitter card
- ☐ Aqua Merry Christmas ribbon
- ☐ Tall pine trees die by Frantic Stamper
- ☐ Alpine Snowflake punch by Martha Stewart

Skating

- 1 Create a 14.8cm square card blank from white card.
- 2 Select the paper with the lace edge and cut a 13.8cm square, with the lace edge on two sides (the top and left). Mount on dark blue card leaving a small border around each side.

- 3 Wrap ribbon around the panel 1.5cm from the top. Secure the ends at the back and attach the panel centrally to the card front.

- 4 Download the first page of the digi kit. Reduce the image to 10.5cm square and print. Cut off the outer frame taking care to cut around the trees. Attach to the centre of the card front 1.5cm from the bottom edge.

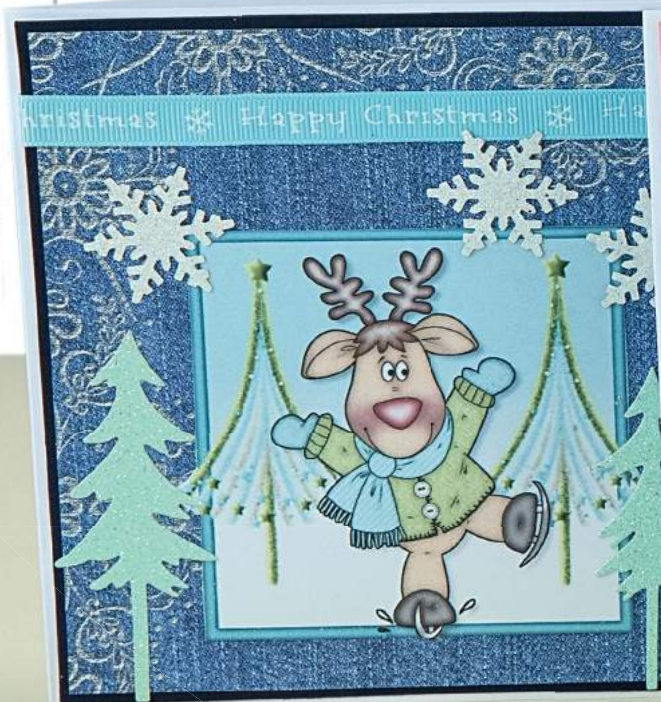
- 5 Die-cut a set of trees from aqua glitter card using the tall pine trees die. Attach the largest to the left-hand side of the image and the other three to the right-hand side. Punch three snowflakes from white glitter card and attach around the top of the image.

Where can I buy it?

Digi kits available from www.pinkgemdesigns.com.

Paper pads available from www.craftworkcards.co.uk.

Frantic stamper, Memory box and Impression Obsession dies available from www.maddylisacrafts.co.uk.



What do I need?

Lights

All items at start plus:

- ☐ Christmas lights Jingles card topper digi kit by Pink Gem Designs
- ☐ Pink and teal card
- ☐ Aqua glitter card
- ☐ Snowflake ornament die by Memory Box
- ☐ Cream and aqua Merry Christmas ribbon
- ☐ Pink and white bakers twine

Lights

- 1 Create a 14.8cm square card blank from white card.
- 2 Cut a 13.8cm square from large spotted paper and mount onto pink card leaving a small border. Cut a strip from lace edge paper to 13.8x6.5cm and attach across the panel 1cm from the bottom.
- 3 Wrap ribbon around the panel 2cm from the bottom. Secure the ends at the back and attach centrally to the card blank.
- 4 Download the first page of the digi kit. Reduce the image to 10.5cm square and print. Attach at an angle so that the bottom right-hand corner sits on the ribbon.
- 5 Die-cut two ornaments from teal card. Mount on aqua glitter card and trim to size. Tie with pink and white twine and attach one either side of the image with the one on the left lower than the one on the right.

What do I need?

Santa stop here

All items at start plus:

- ☐ Santa stop here Jingles card topper digi kit by Pink Gem Designs
- ☐ Kraft and red card
- ☐ Crystal Stickles
- ☐ Santa die by Impression Obsessions

Santa stop here

- 1 Create a 14.8cm square card blank from Kraft card.
- 2 Select dark blue paper with the pattern on the edges. Cut a 13.8cm square from the centre. Layer on red card leaving a small border around each side. Attach to the centre of the card blank with the small piece of pattern in the bottom right-hand corner.
- 3 Cut a strip from large spotted paper measuring 13.8x6.4cm. Cut the left short edge into a 'v' shape. Attach across the bottom of the panel.
- 4 Download the first page of the digi kit. Reduce the image to 9.8cm and print. Cut out the topper and fix to the bottom right corner of the panel. Attach the panel to the centre of the card front.
- 5 Die-cut the Santa sleigh from white card. Cut off the first two reindeer and discard. Attach across the top of the card front to finish.

What do I need?

Skiing

All items at start plus:

- ☐ Skiing Jingles card topper digi kit by Pink Gem Designs
- ☐ Kraft and dark blue card
- ☐ Alpine Snowflake punch by Martha Stewart
- ☐ White glitter card
- ☐ Let it snow button

Skiing

- 1 Create a 14.8cm square card blank from Kraft card.
- 2 Cut a 13.8cm square from small spotted paper and layer on dark blue card leaving a small border around each side. Attach to the centre of the card blank.
- 3 Cut an 11.5cm square from lace edge border paper and attach to the centre of the card front.
- 4 Download Page 1 of the digi topper kit. Reduce to 9.8cm square and print. Attach centrally 2.2cm from the top edge. Cut out the sentiment from Page 1 of the kit, layer on dark blue card and then white card. Attach underneath the image 3cm from the left edge.
- 5 Adhere the 'let it snow' button with strong glue towards the bottom right-hand corner. Punch three snowflakes from white glitter card and attach around the top of the image.



HUGE COMPETITION!

WIN AN AMAZING TODO MULTI-FUNCTIONING CRAFTING MACHINE AND ACCESSORIES!

The TODO Multi-Functional Crafting Machine gives you the power to Hot Foil, Letterpress, Die Cut and Emboss to create stunning mixed media projects and Making Cards has a kit worth over £400 to be won by a lucky reader!



What makes TODO stand out?

The adjustable roller height allows you to dial in the correct pressure to use your own dies and folders, while the removable hot foil plate heats up your hot foil templates to add beautiful foiled designs to your projects. It has a light indicator to highlight when the machine is at optimum temperature, anti-slip feet to keep it from slipping along the work surface when in use, and a fold away handle that can be tucked behind the roller when not in use.

With a measuring guide to help you accurately place your media into position, ten metal cogs engineered to create a smooth operational experience and a

two way roller to allow for intricate details to be 'rocked' into stubborn media, TODO has a stunning design and packaging with a lovely, sophisticated aesthetic.

Featuring five Die Templates, four Letterpress and Hot Foil Plates and a pack of four Foils to create wonderfully festive pieces fit for the season, the intricacy throughout these Christmas Accessories truly is second to none!

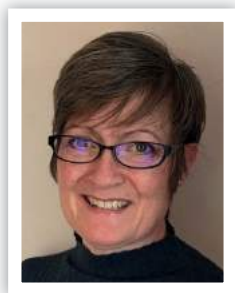


To find out more about the TODO visit www.createandcraft.tv/todo

You can
now enter
online!

Enter online:
www.makingcardsmagazine.com

Or post your entry to: TODO Competition, Making Cards, Warners Group Publications, West Street, Bourne, Lincolnshire, PE10 9PH.
(Please state if you do not wish Warners Group PLC to contact you regarding their products or services that may be of interest or for your details to be shared with reputable third companies)
The closing date for entries is 31st October 2016. No entries received after this date will be entered. The winners are picked at random and the editors decision is final.



DESIGNED BY
SUE HASTEAD

Stylish silhouettes



"The simple look of a stamped silhouette creates such a stylish appearance against a colourful, inked backdrop. I love watercolouring the inks to form a blended background"

Sue

Magic

1 Using the 12cm circle die create a white card blank with the fold at the top. Using the 12cm scalloped circle die-cut black card and stick to the card front.

2 Using the 11.5cm circle die-cut a piece of watercolour card. Cut a length of masking tape to the same width. Tear the masking tape lengthways to make a rough edge and stick the tape across the card 3.5cm up from the bottom edge with the rough edge at the top. Using a paintbrush, wet the top portion of the card.

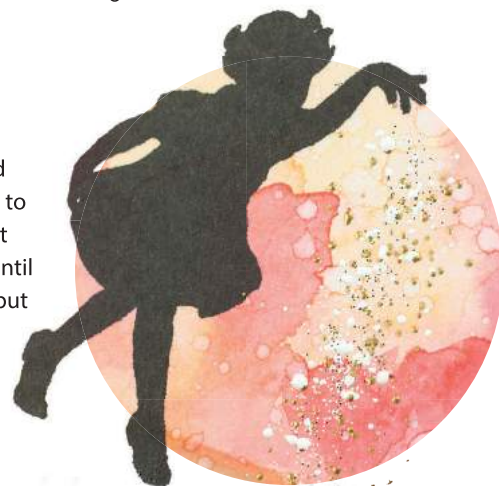
3 Using a blending mat as a palette, and working from the centre outwards, paint the card with Distress inks in the following order: Tea Dye, Shabby Shutters, Milled Lavender and Festive Berries. Dry the card with a heat gun and whilst doing so continue to add a little more Distress ink. Leave the card to dry once you have an effect you are happy with.

4 Dip your fingers in some water and flick over the card. Allow the water to sit for a few seconds and dry with a heat gun. You can repeat this several times until you have an effect you are happy with but allow the card to dry completely between each application.

5 Remove the masking tape and paint along the edge you have exposed with Vintage Photo ink. Use water to blend the ink downwards towards the bottom of the card. Allow to dry.

6 Stamp the Curtsy Silhouette image onto the inked card with Onyx Black ink. Once the ink is dry, sprinkle a little Shabby White Fran-tage under the little girl's hand (as if she is sprinkling magic!) and heat set from underneath the card with a heat gun.

7 Stamp the 'Magic' sentiment from the Whimsy Stamps set beneath the image with black VersaColor ink. Quickly heat emboss with clear embossing powder. Attach the inked card to the centre of the card front.



What do I need?

For all cards

- ☐ White and black card
- ☐ White watercolour card
- ☐ Masking tape
- ☐ Onyx Black VersaFine inkpad
- ☐ Black VersaColor pigment inkpad
- ☐ Clear embossing powder by Ranger
- ☐ Die-cutting machine

Magic

All items above plus:

- ☐ Circle and Scalloped Circle Layering die set by Tonic Studio
- ☐ Tea Dye, Shabby Shutters, Milled Lavender, Festive Berries and Vintage Photo Distress inkpads
- ☐ Curtsy Silhouette stamp by Dina Kowal for Impression Obsession
- ☐ Fran-tage Shabby White Embossing Enamel by Stampendous
- ☐ Snowflake Wishes sentiment stamp set by Denise Lynn for Whimsy Stamps



What do I need?

Let it snow

All items at start plus:

- ☐ Scalloped Square Layering die set by Tonic
- ☐ Antique Linen, Victorian Velvet, Seedless Preserves, Chipped Sapphire and Peacock Feathers Distress inkpads
- ☐ Skaters Silhouette stamp by Dina Kowal for Impression Obsession
- ☐ Fran-tage Chunky White Embossing Enamel by Stampendous
- ☐ Snowy Backdrops stamp set by Lawn Fawn

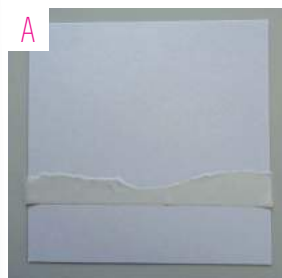
Let it snow

1 Create a 14cm square white card blank with the fold at the top. Using the largest scalloped square die-cut a piece of black card. Attach to the card front.

2 Cut a piece of watercolour card to 13cm square. Cut a length of masking tape to the same width. Tear the masking tape lengthways to make a rough edge and stick the tape across the card 4cm up from the bottom edge with the rough edge at the top (Picture A). Using a paintbrush wet the top portion of the card.

3 Using a blending mat as a palette, and working upwards, paint the card with Distress inks in the following order: Antique Linen (Picture B), Victorian Velvet (Picture C), Seedless Preserves (Picture D) and Chipped Sapphire (Picture E). Dry the

Step by steps



card with a heat gun and whilst doing so continue to add a little more ink. Leave the card to dry. Flick some water over the card. Allow the water to sit on the card for a few seconds and dry with a heat gun.

4 Remove the masking tape and paint along the edge you have exposed with Peacock Feathers ink. Use water to blend the ink downwards towards the bottom of the card. Allow to dry.



5 Stamp the Skaters Silhouette onto the painted card with Onyx Black ink. Once the ink is dry, sprinkle a little Chunky White Fran-tage over the image. Heat set from underneath the card with a heat gun.

6 Stamp 'Let it snow' from the Snowy Backdrops stamp set underneath the image with black VersaColor ink. Quickly heat emboss with clear embossing powder. Fix the completed card to the card front.



Where can I buy it?

All Tim Holtz, Ranger and Stampendous products available from www.crafty-ideas.co.uk.

Impression Obsession stamp available from www.stampsandmemories.co.uk, www.franticstamper.com and www.crafty-ideas.co.uk (01527 8571110)

Dies and sentiment stamp sets available from www.diestodiefor.com.

What do I need?

Peace and joy

All items at start plus:

- ☐ Mixed Scallop and Straight Cut Rectangle Layering die set by Tonic
- ☐ Star stamp by Clarity Stamp
- ☐ Color Box pigment inkpad in Frost White
- ☐ Ultra Thick embossing powder by Ranger
- ☐ Tumbled Glass, Broken China, Chipped Sapphire, Black Soot and Weathered Wood Distress inkpads
- ☐ Deer Silhouette Stamp by Alesa Baker
- ☐ Designs for Impression Obsession
- ☐ Snowy Backdrops stamp set by Lawn Fawn

Peace and joy

1 Create an 11x13.5cm white card blank with the fold at the top. Die-cut black card to the same size and attach to the card front.

2 Cut a piece of watercolour card to 10x13cm. Cut a length of masking tape to the same width. Tear the masking tape lengthways to make a rough edge and stick across the card 2.5cm up from the bottom edge with the rough edge at the top. Use a paintbrush to wet the top portion of the card.

3 Using a blending mat as a palette, and working upwards, paint the card with Distress inks in the following order: Tumbled Glass, Broken China, Chipped Sapphire and Black Soot. Dry the card with a heat gun and continue to add a little more ink. Leave the card to dry once you have an effect you are happy with. Flick water over the card.

4 Remove the masking tape and paint along the edge you have exposed with Weathered Wood ink. Use water to blend the ink downwards. Allow to dry.

5 Stamp the Deer Silhouette onto the inked card with Onyx Black ink.

6 Stamp 'Peace and joy' from the Snowy Backdrops stamp set underneath the image using black ink. Quickly heat

emboss it with clear embossing powder. Attach the card to the centre of the card front.



HAVE YOU EVER TRIED PARCHMENT CRAFT?

Parchment Craft is a dedicated craft magazine packed full of exclusive projects, unique designs and inspirational ideas.

Discover how to make your cards even more spectacular by using white work, grid work, embossing skills and other card making techniques.



Buy your copy today for just £3.95

www.parchmentcraftmagazine.com

GRAPHTEC

Introducing the new SILHOUETTE CAMEO[®] 3



Deep Cut Blade
Dual Tool Holder
Auto Adjusting Blade



 **Bluetooth[®]**

Tel: 01978 666700
sales@graphtecgb.co.uk www.graphtecgb.co.uk

Cut it Out *by Patchwork Cutters*

Our new Cut it Out range works brilliantly
with Artista Soft for creating stunning
papercraft designs. See the full range at
www.patchworkcutters.com



PRIZES FOR YOU

Here's your chance to win lots to boost your craft stash! To enter simply visit our website or send us your address on a postcard listing the giveaways you are interested in. The closing date for all entries is **30th October 2016**.

5
sets to be
WON!

Design on a whim!

5 lucky winners will each receive four 6x6 designer paper pads and coordinating enamel dots from the colourful Whimsy range and designed by non other than Making Cards contributor Tracy Wray! Each lucky reader will receive Summer Breeze; bright fun colours with a summer theme, It's a Party; filled with party designs, Winter Wishes; a section of vintage snowy illustrations and Christmas Cheer; traditional Christmas colours, allowing you to make cards for all year round whenever the inspiration strikes! Each pad contains 24 sheets, 2 of each design, on single sided paper.

To purchase visit www.diestodiefor.com (020 8224 9101).



1
set to be
WON!

Intricut dies

Intricut is an exciting new die-cutting brand exclusive to Hobbycraft and Making Cards has a full set of numbers to give away! Focusing on the highest quality materials combined with delicate on-trend designs the dies have been developed by crafters for crafters. The dies feature intricate and detailed images for all occasions and are compatible with most die cutting machines.

Visit www.hobbycraft.co.uk to view the full collection.



Country Living Fair

The Country Living Magazine Christmas Fairs take place in London, Glasgow and Harrogate in November and December and Making Cards has 5 pairs of tickets to each venue to be won! The joyful events put the merry into Christmas and the preparation is part of the fun. From stocking fillers to decorations; tasty treats and table accessories, gifts and personal pampering the Country Living Christmas Fairs have something for everyone. In addition to fabulous presents and festive fare, take home some tips from the experts to transform your parcels with beautiful gift-wrapping; add sparkle to your table and garland your home, try the glorious food and drink from the regional food producers and be inspired by menus fit for a feast. There are 12 days of Christmas to enjoy and you can prepare for all of them with just one magical visit to Country Living Christmas Fair.

To find out more visit www.countrylivingfair.com.

Please state which show you wish to attend on your entry.

London at the Business Design Centre, Islington, London N1 from 9-13 November 2016. Glasgow at the SECC, Glasgow, G3 8YW from 17-20 November 2016. Harrogate at Harrogate International Centre, Kings Road, Harrogate HG1 5LA from 1-4 December 2016

15
pairs to be
WON!



You can
now enter
online!

Enter online:
www.makingcardsmagazine.com

Or post your entry to: Prizes for You Christmas Edition, Making Cards, Warners Group Publications, West Street, Bourne, Lincolnshire, PE10 9PH.

(Please state if you do not wish Warners Group PLC to contact you regarding their products or services that may be of interest or for your details to be shared with reputable third party companies)

Subscribe to *Making* Cards

YES, I would like to subscribe to **Making Cards** magazine

☐ UK Direct Debit £29.99 bi-annual subscription

☐ UK Cheque or Card £49.99 annual subscription

YOUR DETAILS...

Title _____ Forename _____ Surname _____

Address _____

Post Code _____

☐ Yes I am happy to receive relevant special offers via post.

Telephone (including area code)* _____ Mobile* _____

Email* _____

☐ Yes I would like to receive the FREE Making Cards email newsletter

GIFT RECIPIENT'S DETAILS (if applicable)

Title _____ Forename _____ Surname _____

Address _____

Post Code _____

Telephone (including area code)* _____ Mobile* _____

Email* _____

PAYMENT DETAILS...

Instructions to your Bank or Building Society to pay by Direct Debit

Service User Number **942240**

FOR WARNERS GROUP PUBLICATIONS PLC OFFICIAL USE ONLY
This is not part of the instruction to your Bank or Building Society.

MACD/2016/CHRISTMASGIFT

To the Manager _____ Bank Building Society

Address _____
Postcode _____

Names of Account Holder(s) _____ Branch Sort Code _____

Bank/Building Society Account Number _____ Reference Number _____

Signature(s) _____
Date _____

Instruction to your Bank or Building Society - Please pay Warners Group Publications plc Direct Debits from the account detailed in this instruction subject to the safeguards assured by the Direct Debit Guarantee. I understand that this instruction may remain with Warners Group Publications plc and, if so, will be passed electronically to my Bank/Building Society

Direct Debit is only available in the UK.

*This gift is only available to UK residents with Direct Debit subscription. This offer is not available elsewhere.

LIMITED OVERSEAS CHRISTMAS OFFER – SAVE £10!

☐ EU – annual subscription £64

☐ Rest of World – annual subscription £79.99

Please debit my card

Card No. _____ Issue no. _____
Expiry date _____ 3 digit security code _____ Start date _____

Signature _____ Date _____

☐ I enclose a cheque made payable to Warners Group Publication Plc for £

Please complete and return your order form to:

UK: Making Cards Subscriptions Department, FREEPOST: WARNERSGROUP

Overseas: Making Cards Subscriptions Department, Warners Group Publications, West Street, Bourne, Lincolnshire, PE10 9PH, United Kingdom

T&Cs: If you are paying by Direct Debit, once we have received your order we will write to you confirming your payment dates at least 10 days before your first payment is claimed. Payments will be shown on your bank statement as Warners Group Publications. A no refund policy is in place for the first 12 months of the subscription. Your gift will be shipped once payment has been confirmed.

Closing date for orders is 16th December 2016

SUBSCRIBE



Here at Making Cards, we love Christmas and we thought you might just too!

So until the 16th December 2016 we are offering a FREE GIFT from PaperArtsy with every UK subscription* to Making Cards.

Available in 12 unique colours, Infusions are a water reactive non-permanent dry dye stain that is mixed with walnut crystals. Use with stencils or blend freely on paper or fabric to create fantastic effects!

We are offering this fantastic set of all 12 colours with either a £29.99 bi-annual Direct Debit subscription or a £49.99 annual subscription. The choice is yours!

Whether they're for you, or a friend, they are the perfect gift this Christmas for any crafter.

Sally

Enjoy!

Sally

CREATE THESE EFFECTS WITH YOUR FREE GIFT



for just **£29.99** plus

**FREE GIFT
WORTH OVER
£28!**

12

UNIQUE
INFUSIONS FROM
PaperArtsy
eclectic rubber stamps & stuff
WWW.PAPERARTSY.CO.UK



FANTASTIC ON
PAPER AND
FABRIC

www.makingcardsmagazine.co.uk

subscriptions@warnersgroup.co.uk 01778 395171

promotional code: MACD/2016/CHRISTMASGIFT

Offer ends 16th December 2016.



DESIGNED BY
TRACY WRAY

No peeking!

"These adorable peeking elves make the cutest finishing touch to your Christmas cards, they are exclusively available at beckab.co.uk and I can't wait to create more ideas using them!" *Tracy*

No peeking

- 1 Create a 13.7x10.7cm white card blank with the fold at the top.
- 2 Cut red striped paper from the paper pad to measure 12.7x9.5cm and green card to measure 13.2x10cm. Dab white ink along the edges of each piece, then layer them together. Fix to the centre of the card front.

- 3 Cut green dotted paper from the paper pad to 6.2x7.5cm. Cut a 1.3x7.5cm strip of red patterned paper from the paper pad and fix down the centre of the green paper. Stick to the left-hand side of the card front. Add a red paper flower with leaves either side to complete the present.

- 5 Computer generate a sentiment and mount on green card, dabbing white paint along the edges. Fix to the top right corner of the card front using foam pads.

- 6 Finish by adding two adhesive pearls to the bottom right corner of the card front.

What do I need?

For all cards

- ☐ White card
- ☐ Peeking Left, Right and Up stamp set by Vilda Stamps
- ☐ Black inkpad
- ☐ Copic marker pens

No peeking

All items above plus:

- ☐ Green card
- ☐ Christmas Cheer paper pad
- ☐ White paint
- ☐ Adhesive pearls

- 4 Use black ink to stamp the peeking elf on white card. Colour with Copic marker pens and trim to size. Fix to the bottom right of the present.



Where can I buy it?

Paper pads available from www.diestodiefor.com.

Stamps and Copic marker pens available from <http://www.beckab.co.uk/>

Snowflake punch available from <http://www.papermaze.co.uk/>



Merry Christmas

1 Create a 10x15cm card blank from Kraft card. Cover the card front with blue dotted paper from the paper pad.

2 Cut two 1.7x15cm strips and two 1.7x10cm strips from Kraft card.

Use a black fine liner pen to draw lines that resemble the grain in wood. Make sure the lines are not perfect or neat! Dab Brushed Corduroy and Walnut Stain ink along the edges of each strip. When dry, attach the longer strips down the left and right sides of the card front and the shorter strips across the top and bottom, to form a 'wooden' frame. Draw dots in each corner as shown to resemble nail heads.

3 Use black ink to stamp the peeking elf on white card. Colour with Copic marker pens and trim to size. Fix to the bottom of the card front so he looks as though he is peeking over the bottom of the frame.

4 Computer generate a sentiment and mount on Kraft card, leaving a thin border all round. Dab Walnut Stain ink along the edges and fix to the card front just above centre using foam pads.

5 Make a red gingham bow and trim the ends at an angle. Fix above the sentiment.

6 Punch two snowflakes from white card. Fix one on top of the bow. Cut the other in half and fix to the left and right edges of the wooden frame. Add a red paper flower on top of each snowflake.

What do I need?

Merry Christmas

All items at start plus:

- ☐ Kraft card
- ☐ Winter Wishes paper pad
- ☐ Brushed Corduroy and Walnut Stain Distress inkpads
- ☐ Snowflake punch by Martha Stewart
- ☐ Red paper flowers
- ☐ Red gingham ribbon

No peeking til Christmas

1 Create an 8.5x14.5cm white card blank. Cover the card front with red patterned paper from the paper pad.

2 Trim striped paper from the paper pad to 8.5x7cm and fix to the top of the card front.

3 Cut an 8.5x1.7cm strip from cream striped paper and an 8.5x2.5cm strip from red paper. Dab Walnut Stain ink along the edges of each piece and layer together. Fix across the card front to conceal the join in the two papers.

4 Cut a 1.7x14.5cm strip from Kraft card. Draw uneven lines along the strip using a black fine liner pen and dab Brushed Corduroy and Walnut Stain ink along the edges. Attach this 'wooden' strip down the right edge of the card front. Insert a brad through the middle of the wooden strip to represent a door handle. Dab Walnut Stain ink along the edges of the card front.

5 Use black ink to stamp the peeking elf on white card. Colour with Copic marker pens and trim to size. Stick to the bottom of the wooden strip, so he looks as though he is peeking from behind a door.

6 Computer generate a sentiment and mount on green card, dabbing Walnut Stain ink along the edges. Fix to the top of the card front and add a red paper rose either side of it.

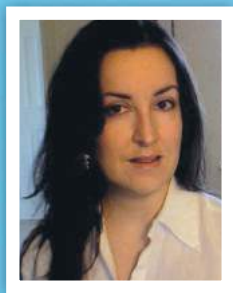
What do I need?

No peeking til Christmas

All items at start plus:

- ☐ Kraft card
- ☐ Christmas Cheer paper pad
- ☐ Brushed Corduroy and Walnut Stain Distress inkpads
- ☐ Red paper roses





DESIGNED BY
EMMA WILLIAMS

Make gnome mistake IT'S CHRISTMAS!

"I love stamped elves at Christmas, so when I saw these festive gnomes I knew I had to create some fantastic designs using them! I have added sprays of die-cut foliage to add to the woodland look, with glitter and Enamel Accents added to create snow!" Emma

Sending Christmas cheer

- 1 Create a 21x15cm white card blank. Cut blue dotted paper to measure 20x14cm and mount onto red card. Fix to the centre of the card front.
- 2 Cut snowflake script paper to 20x3.5cm and mount onto the reverse side of the dotted paper, trimming a thin border along the top and bottom. Fix across the middle of the card front.
- 3 Cut a piece of white card to 13.5x11.5cm. Use black ink to stamp the small gnome on the right-hand side of the card. Stamp the larger gnome directly next to the smaller one.
- 4 Colour each gnome using Polychromos colouring pencils. Build up the colour gradually. Add glitter highlights to the pompoms on the hats and around the base of each one.

- 5 Blend Tumbled Glass ink around the gnomes, taking it about two thirds of the way down the panel. Apply a small amount of Enamel Accents onto the background to form the look of snow falling and leave to dry.
- 6 Using a black fine line pen, add faux stitching around the outside of the panel. Double mount onto green and then red card, leaving a thin border each time. Attach the panel to the right of the card front using foam pads.
- 7 Using the second smallest of the Stitched Ovals dies, die-cut a piece of Kraft card. Use black ink to stamp 'Sending Christmas cheer' in the centre and fix to the bottom left corner of the gnome panel using foam pads.
- 8 Spritz a piece of white card using Iced Spruce spray stain and a second piece

of card with Evergreen Bough. Dry the card thoroughly before using the Holiday Greens dies to die-cut a selection of foliage. Dab Forest Moss ink around the edges of each piece. Apply a small amount of gesso to the edges to create the look of snow. Allow to dry, then arrange behind the stamped sentiment.

- 9 Die-cut white card using the two smallest Paper Snowflake dies. Layer over the top of one another, slightly offsetting them and stick to the left of the foliage. Add an adhesive gem to the centre of the snowflake. Finish by adding a wooden snowflake above the paper one.



What do I need?

For both cards

- ☐ White, Kraft, red and green card
- ☐ 8x8 Silent Night paper pad by First Edition
- ☐ Make Gnome Mistake stamp set by Lisa Horton
- ☐ Open Studio Stitched Oval Layers dies by Memory Box
- ☐ Holly Medium punch by Tim Holtz for Sizzix
- ☐ Holiday Greens Set 4pk and Paper Snowflakes Spk Thinlits dies by Tim Holtz for Sizzix
- ☐ Glacier White Enamel Accents by Ranger
- ☐ Frayed Burlap, Tumbled Glass and Forest Moss Distress inkpads
- ☐ Iced Spruce and Evergreen Bough Distress spray stains
- ☐ Jet Black Archival inkpad
- ☐ Wooden snowflakes
- ☐ Black fine line pen
- ☐ Clear adhesive gems
- ☐ Texture Paste by Ranger
- ☐ Crystal Glamour Dust

Sending Christmas cheer

All items above plus:

- ☐ Polychromos colouring pencils by Faber Castell
- ☐ Gesso by Ranger
- ☐ White Candi
- ☐ Red and clear adhesive gems

What do I need?

Make gnome mistake

All items at start plus:

- ☐ Notepad die by Tim Holtz
- ☐ Flower die by Craft Asylum
- ☐ Winter Dawn Mega Flakes by IndigoBlu

Make gnome mistake

1 Create a 17.8cm square white card blank. Cut snowflake script paper to measure 17cm square. Mount on gold card, leaving a thin border around each side. Fix to the centre of the card front.

2 Cut a further piece of snowflake script paper to measure 17x3cm. Mount onto gold card, leaving a thin border around each edge. Fix across the bottom of the card front.

3 Die-cut the second largest stitched oval from watercolour card. Use black ink to stamp the large toadstool towards the bottom oval. Watercolour the image in shades of reds and browns, using Distress marker pens and a water brush. Blend Tumbled Glass ink over the surface of the oval.

4 To add some snowy texture, apply a small amount of Texture Paste directly onto the card where you have inked with Frayed Burlap ink. Whilst the paste is still wet, sprinkle Glamour Dust glitter over the top and tap away the excess. Allow to dry.

5 On a separate piece of white card, stamp the gnome image and watercolour using a water brush. Colour the hat and alternative stripes on the stockings using Peacock Feathers ink and the beard using shades of brown. Use Pumice Stone ink to colour the boots. Carefully cut around the outline of the gnome. Using foam pads, place him on the oval, sitting on the toadstool.

6 Punch two small holly leaves from green card. Attach to the gnome's hat, together with three small red adhesive gems to act as berries. Add a star shaped pearl to the end of the gnome's hat.

7 Apply small dots of snow around the image using Enamel Accents. Allow to dry.

8 Die-cut the largest oval from red card. Layer the stamped oval in the centre, then fix to the centre top of the card front with foam pads.

9 Cut Kraft card to 7x3.5cm. Stamp the 'Make gnome mistake' sentiment in the centre using black ink. Add faux stitching around the outside of the card and mount on slightly larger red card. Use foam pads to attach it to the centre bottom of the card front, tucking it under the stamped oval.

10 Spritz one piece of white card with Evergreen Bough spray stain and a second piece using Iced Spruce spray stain. Let the stain run across the card, then heat dry. Die-cut a selection of foliage using the Holiday Greens die. Ink the edges of the pieces using Forest

Green ink. Arrange the foliage in a spray on either side of the sentiment and oval and secure in place.

11 Die-cut four snowflakes from white card. Layer together to form two pairs and fix to either side of the oval, over the top of the foliage. Add a wooden snowflake to the centre of each die-cut snowflake and add a gem to the middle.

12 Finish by adding Candi to the top left and right corners of the card front.

Where can I buy it?

All inks, Tim Holtz dies, punch, texture paste and Gesso available from www.countryviewcrafts.co.uk (01767 262304).

Stamp set available from <http://www.jgdcrafts.com/acatalog/Make-Gnome-Mistake-A5-Clear-Stamp-Set-CEC791.html>

Paper pad available from www.onestopcrafts.co.uk.



HANDPICKED



We receive lots of reader cards here at Making Cards. Some are so good that we thought that each month we would give one talented reader the spotlight they deserved.

This fun Christmas card was created by Céline Lauvie.

About Céline

I tried many sorts of hobbies before stopping on card making when I discovered watercolor pencils then later Copics! I had found THE perfect medium to emphasize these images which I like so much. My style is principally shabby chic but recently I tried to go out of my comfort zone trying more CAS designs. The brands I use most of the time are Maja design, Doodlebug, La-La Land Crafts, Crafty Sentiments, CC Designs, Magnolia and I Am Roses but there is so many more. I make cards mainly for my loved ones however friends and colleagues ask me for cards for their families and so I started a little Etsy shop a few months ago. My recent acquisition of a Silhouette Caméo opened infinite possibilities to me, all 3D projects are so easy to make and I love to make coordinating gift sets.



How I made it...

I created a 14cm square white card blank with the fold at the top. I then decorated the card inside by mounting a 13cm square piece of snowflake patterned paper from the Hello Winter 6x6 paper pad by Echo Park onto aqua card. I placed a 10cm square of white card on the centre on which to write. For the card front I mounted another 13cm square of paper from the paper pad onto 13.5cm aqua card. I punched white card using the snowflake border dies from La-La Land Crafts and fixed it to the top before

fixing the panel to the card front. I trimmed dotty paper to 11.5cm square, mounted as before and fixed to the front at an angle with lovely white lace called Valerie from Live and Love stuck across the centre. I stamped Tawney by Pollycraft at CC Designs onto white card, coloured it with Copics then used a tag shape from the Cotton Lace die set by Marianne Design to cut it out. I decorated the top of the tag, mounted it then stuck it to the centre of the card front with white seam binding thread through the top. I die-cut

the snowflake flag banner die in patterned paper and scalloped trim banner in white card, both by La-La Land Crafts, layered them together and fixed across the top left corner. I decorated the rest of the card by creating a cluster consisting of the Winter Branches and Candy Cane dies from La-La land Crafts, the Tiny's Fern dies set from Marianne Design and flowers from Wild Orchid Crafts Live and Love Crafts and Stamps By Me. To finish I decorated the card with small white snowflakes teamed with teal pearls.



If you'd like one of your designs to be considered for Handpicked then send it to the Editor at the address below along with detailed instructions of how it was made. Don't forget to tell us a little bit about yourself and include a recent photo.

Handpicked, Making Cards, Warners Group Publications PLC, The Maltings, West Street, Bourne, Lincolnshire, PE10 9PH
or email Sally at sally.jarvis@warnersgroup.co.uk

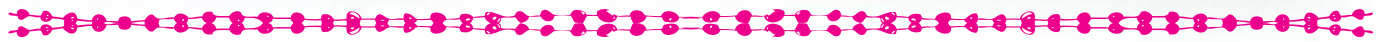
INSPIRATION FOR YOUR FREE

Making Cards

CRAFT PAPER COLLECTIONS

Launching Christmas

by Kitty



DIGITAL BONUS COLLECTION ON YOUR CD ROM!

Christmas Florals

by Emma

Starry Night

by Emma

Focal points don't have to be central

Simple sequins

Lovely layering

Easy folds



Sign up to receive FREE BONUS CRAFT PAPERS sent within our monthly e-newsletter:

www.makingcardsmagazine.com

Copyright Card designs

Designs, ideas, templates and patterns in Making Cards magazine can be used to make as many finished products as you like for any purpose, including to sell. Designers would appreciate an acknowledgement of the source such as 'Handmade by (your name) from a design by (designer's name) in Making Cards magazine. However it is an infringement of designers' rights to copy and then sell templates and patterns themselves by any means, including offering the material for publication, either printed or electronic.

Angel Policy - Free craft papers

Making Cards free craft papers can be used to make cards you wish to sell personally or for charity. However, cards must be made personally by you and not mass produced. It is an infringement of designers' rights to copy, sell, alter or mechanically reproduce the papers and vellum themselves by any means.

Some images in this magazine are © www.shutterstock.com

What do I need?

- ☐ Making Cards Craft Papers MC03CE16, MC09CE16, MC10CE16
- ☐ White and Kraft card
- ☐ Die-cut sentiment
- ☐ Hessian
- ☐ Gold Candi
- ☐ Red ribbon
- ☐ Paper doily

Well hello there!

- 1 Cut and fold white card to create a 13.5x14.5cm card blank with the fold at the top.
- 2 Trim wood effect backing paper, planks displayed horizontally, to 12.5x13.5cm and mount onto Kraft card measuring 13x14cm. Stick a piece of hessian across the panel, approx. 1.5cm from the bottom edge, and trim the ends flush. Wrap red ribbon around the panel, on top of the hessian, before fixing the panel to the card front.
- 3 Cut a strip of the green swirl backing paper to 10x1cm and fix beneath the red ribbon.
- 4 Attach a round white backing paper doily onto the centre of the card.

5 Trim the topper to 8.5x9.5cm, mount onto Kraft card measuring 9x10cm and fix with foam pads to the card as shown.

6 Attach gold Candi to each end of the red ribbon and a die-cut sentiment to the topper to finish.



Jingle all the way

- 1 Create a white card blank measuring 11x14.5cm with the fold on the top edge.



What do I need?

- ☐ Making Cards Craft Paper MC01CE16, MC05CE16, MC08CE16
- ☐ White, red and green card
- ☐ Die-cut sentiment
- ☐ Green ribbon
- ☐ White lace
- ☐ Nuvo Crystal Drops

2 Cut red and green chevron backing paper to 10x13.5cm, mount onto red card measuring 10.5x14cm and fix to the card front.

3 Stripes displayed vertically, trim a strip of the red stripes backing paper to measure 11x4.5cm and mount onto red card measuring 11.5x5cm. Wrap white lace horizontally around the panel with green ribbon on top securing the ends behind. Secure the panel to the card front, approx. 1cm from the bottom edge.

4 Trim the topper to 8x10cm and double mount onto 8.5x10.5cm red card followed by 9x11cm green card. Add three enamel Crystal Drops as shown. Once dry, attach the topper in place with foam pads with an added sentiment.

5 Tie a bow in green ribbon and fix on the left side to finish.

What do I need?

- ☐ Making Cards Craft Papers MC01CE16, MC05CE16
- ☐ White and red card
- ☐ Die-cut sentiment
- ☐ Snowflake embossing folder
- ☐ Snowflake die
- ☐ Red adhesive gems
- ☐ Die-namics Stitched Circle STAX by MFT
- ☐ Pearl medallion ribbon

A note from Santa

- 1 Create a 14.5x11cm card blank with the fold at the top.
- 2 Cut white card to 13.5x10cm, emboss with a snowflake embossing folder and mount onto red card measuring 14x10.5cm.
- 3 Die-cut three circle frames measuring 6cm in diameter from red card. Attach the red striped backing paper behind each frame and stick onto the embossed panel as shown. Wrap red ribbon around the bottom of the panel and secure the ends at the back. Attach pearl medallion ribbon on top. Fix the panel to the card front.



What do I need?

- ☐ Making Cards Craft Paper MC04CE16, MC05CE16
- ☐ White and green card
- ☐ Circular die
- ☐ Stars embossing folder
- ☐ White paper doily

Santa

- 1 Using white card create a card blank measuring 10.5x14.5cm and with the fold on the top edge.
- 2 Cut a piece of the red and green backing paper to 9.5x13.5cm, mount onto green card measuring 10x14cm and fix to the card front.
- 3 Draw around the equivalent or die-cut a circle from white card measuring approx. 8.5cm in diameter. Emboss this piece with a star embossing folder. Attach a white doily behind and fix onto the top section of the card front.
- 4 Carefully cut around the jumping Santa topper and attach onto the circle with foam pads to finish.



Launching Santa

1 Cover the front of the shaped card blank with the yellow backing paper and trim all the edges flush. Draw a faux stitched border around the whole card with a fine line pen.



What do I need?

- ☐ Making Cards Craft Papers MC04CEI6, MC05CEI6, MC06CEI6
- ☐ Shaped card blank
- ☐ White and Kraft card
- ☐ Black fine line pen
- ☐ Die-cut sentiment
- ☐ Fancy corner rounder punch
- ☐ Grey adhesive pearls

2 Cut a strip of the red striped backing paper, stripes displayed horizontally, to measure 2.5x13cm. Cut a 'V' in one end and attach down the centre of the card.

3 Trim the topper to 7.5x9.5cm and punch the corners with a fancy corner punch. Mount onto grey card measuring 8x10cm and punch the corners to match. Attach the topper onto the card with foam pads.

4 Optional: Print out another rocket Santa topper provided on the free CD Rom, carefully cut out and attach onto the topper with foam pads to create a 3d topper.

5 Stick grey adhesive pearls onto a die-cut sentiment and fix in place to finish.

What do I need?

- ☐ Making Cards Craft Papers MC02CEI6, MC07CEI6
- ☐ White, dark blue and red card
- ☐ Black fine line pen
- ☐ Die-cut sentiment
- ☐ Decorative border punch
- ☐ White paper doily
- ☐ White mesh

Santa's rocket!

1 Cut and fold white card to create a 14.5x13cm card blank with the fold at the top.

2 Cut a piece of the night sky backing paper to measure 13.5x12cm mount onto dark blue card measuring 14x12.5cm and fix onto the card front.

3 Punch the bottom edge of yellow card using a border punch of your choice and trim to 13.5x2.5cm. Fix to the card front approx. 1.5cm from the bottom edge.

4 Attach white mesh across the background and a paper doily over the top.

5 Trim the topper to 9.5x8cm and draw a solid border around the edge. Mount the topper onto red card measuring 10x8.5cm and attach in place with foam pads to finish.



Santa's sack

- 1 Create a 14.5x9.5cm white card blank with the fold at the top.
- 2 Cut a piece of the red stripes backing paper to 13x8cm, stripes displayed vertically, and double mount onto red card measuring 13.5x8.5cm followed by 14x9cm black card. Wrap black gingham ribbon horizontally around the base of the panel before fixing to the card front.



What do I need?

- ☐ Making Cards Craft Paper MC02CE16, MC05CE16
- ☐ White, black and red card
- ☐ Die-cut sentiment
- ☐ Black gingham ribbon
- ☐ Flower buds and berries
- ☐ Adhesive pearls

- 4 Trim the topper to 9.5x7.5cm and draw a solid border with a black fine line pen. Double mount onto red card measuring 10x8cm then black card measuring 10.5x8.5cm and attach onto the card using foam pads.
- 5 Tie a bow in more of the same ribbon and attach a pearl to the centre. Attach some flower sprays and berries behind the ribbon and fix on the left side of the card front.
- 6 Add red adhesive pearls onto a die-cut sentiment and attach in place with foam pads to finish.

What do I need?

- ☐ Making Cards Craft Paper MC03CE16, MC09CE16
- ☐ 12cm square scallop card blank
- ☐ Red and green card
- ☐ Die-cut sentiment

SUPER
QUICK
CARD!

Christmas wishes

- 1 Trim a piece of wood effect backing paper to 10.5cm square and double mount onto 11cm square red card followed by 11.5cm green card. Fix the panel to the card front.
- 2 Trim the topper to 8.5x9cm, mount onto 9x9.5cm and fix to the centre of the card using foam pads.
- 3 Stick a die-cut sentiment of your choice to finish.



Merry Christmas

- 1 Create a top folded 15cm square white card blank.
- 2 Cut the black floral/pinecone backing paper to 14cm square, mount onto green card measuring 14.5cm square and fix to the card front.



What do I need?

- ☐ Making Cards Craft Papers MC52CEI6, MC53CEI6, MC54CEI6
- ☐ Green, white, pale pink and gold mirri card
- ☐ Burgundy seam binding
- ☐ Small pink enamel dots
- ☐ Paper poinsettias
- ☐ Regal Gold Candi
- ☐ Diamond Stickles glitter glue

- 3 Create an 8.5cm square of the backing paper with script, double mount onto pale pink followed by gold mirri and fix to the centre.
- 4 Cut a second piece of the same backing paper to 13.5x5cm, mount onto pale pink card measuring 14x5.5cm and fix across the card front.
- 5 Mount the topper onto pale pink card and fix as shown using foam pads. Add glitter highlights and an enamel dot to each corner.
- 6 Tie two short strips of red seam binding into mini bows and secure one either side of the topper with a paper poinsettia on the top.
- 7 Add gold Candi to each corner of the card to finish.

What do I need?

- ☐ Making Cards Craft Papers MC58CEI6, MC60CEI6, MC93CEI6
- ☐ Red, white, cream and gold mirri card
- ☐ Sage green and green seam binding
- ☐ Gold sparkle poinsettias
- ☐ Red Candi
- ☐ Diamond Stickles glitter glue
- ☐ Glossy Accents

Holly and berries

- 1 Create a 15cm square white card and position with the fold at the top.
- 2 Cut green floral backing paper to 14cm square, mount onto 14.5cm square red card and fix to the card front.
- 3 Trim white floral backing paper to 11.5cm square and mount onto gold mirri card measuring 12cm square. Wrap green seam binding horizontally around the centre of the panel and secure the ends at the back. Fix the panel to the card centre.
- 4 Mount the topper onto cream card, add glitter highlights and using foam pads fix to the centre.



- 5 Tie sage seam binding into a scruffy bow. Attach a gold poinsettia and fix on the left side of the topper.
- 6 Add red Candi to the inner panel and apply a layer of Glossy Accents over the top to finish.

Stunning scallops

1 Cut white pinecone backing paper to 13cm square, mount onto red card measuring 13.5cm card and fix to the centre of the scalloped card bank, fold positioned at the top.

What do I need?

- ☐ Making Cards Craft Papers MC50CE16, MC51CE16
- ☐ 148mm white scalloped card blank
- ☐ Red card
- ☐ Sage green seam binding
- ☐ Paper poinsettias
- ☐ White Candi
- ☐ Gold Stickles glitter glue

2 Cut a second piece of the pinecone backing paper to measure 13.5x10.5cm. Mount onto red card measuring 14x11cm and fix to the card front slightly overlapping the top folded edge.

3 Cut the topper to 8.3x11.5cm and mount onto red card. Attach to the centre as shown.

4 Tie seam binding into a scruffy bow and secure at the foot of the central panels. Add a poinsettia on top.

5 Add Candi to each corner of the topper and apply a layer of gold glitter glue over the top to finish.



What do I need?

- ☐ Making Cards Craft Papers MC56CE16, MC64CE16
- ☐ Red, cream, pink and gold mirri card
- ☐ Red seam binding
- ☐ Paper poinsettia
- ☐ Blue Candi
- ☐ Diamond Stickles glitter glue
- ☐ Glossy Accents
- ☐ Small pink enamel dots

Berries and bows

1 Create a cream card blank measuring 15x14cm and place in front of you with the fold at the top.

2 Cut blue floral backing paper to 14x13cm, mount onto red card measuring 14.5x13.5cm and fix to the card front.

3 Cut a second strip of the blue floral backing paper to 15x3cm, mount onto cream card measuring 15.5x3.5cm and fix across the card approx. 1.5cm from the bottom edge.

4 Double mount the topper onto red then gold mirri card and fix to the card front as shown using foam pads. Add an enamel dot to each corner and glitter highlights.

5 Tie red seam binding into a scruffy bow and attach below the topper with a poinsettia fixed to the centre.

6 Add Candi to each end of the border strip and apply a layer of Glossy Accents over the top to finish.



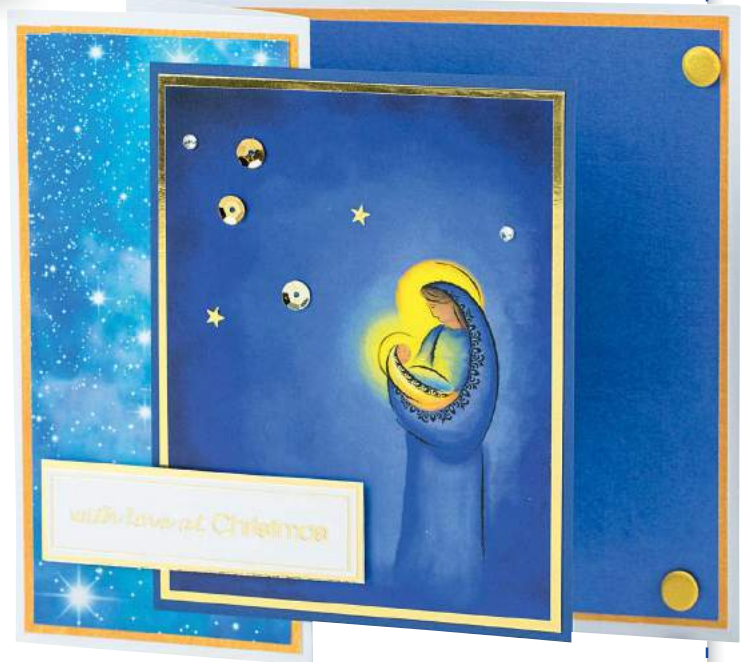


What do I need?

- ☐ Making Cards Craft Papers MC099CE16, MC100CE16, MC111CE16, MC112CE16
- ☐ Navy, white and gold mirri card
- ☐ Die-cut sentiment
- ☐ Gold Candi
- ☐ Gold sequins and stars

Mother and child

- 1 Create a 15cm square white card blank. Score horizontally down the centre and fold the right edge back to meet the left fold creating a z fold card blank.
- 2 Cut blue backing paper to 14cm square, mount onto 14.5cm square orange backing paper or card and fix to the card inside.
- 3 Trim night sky backing paper to 6.5x14cm, mount onto orange backing paper or card measuring 7x14.5cm and fix to the card front.
- 4 Double mount the topper onto gold mirri followed by navy blue card. Fix to the card front so that it is positioned on the right hand side of the card blank, attaching it to front opening fold only. Attach some sequins and gold stars.



With love at Christmas

- 1 Create a top folded 15cm white card blank.
- 2 Cut striped backing paper to 13.5cm square and double mount onto 14cm navy card followed by 14.5cm square yellow backing paper or card.



What do I need?

- ☐ Making Cards Craft Papers MC098CE16, MC100CE16, MC103CE16, MC112CE16, MC103CE16
- ☐ White, navy and gold mirri card
- ☐ Die-cut sentiment
- ☐ Blue Candi
- ☐ Gold sequins
- ☐ Clear adhesive gems
- ☐ Glossy Accents
- ☐ Glamour Dust Crystal Glitter

- 3 Create a strip of the night sky backing paper measuring 14.5x4cm and mount onto gold mirri card measuring 15x4.5cm. Attach the border strip horizontally across the card front.
- 4 Cut the Nativity scene to 10cm square and double mount onto orange backing paper or card followed by white card before fixing to the centre of the card front using foam pads.
- 5 Attach a circular die-cut sentiment to the top left corner and a gold sequin to the centre of the star with a gem in the centre.
- 6 Add blue Candi to each corner of the card. Apply Glossy Accents over the top and sprinkle with Glamour Dust glitter, tapping away the excess.



What do I need?

- ☐ Making Cards Craft Papers MC099CE16, MC100CE16, MC111CE16
- ☐ White, blue and gold mirri card
- ☐ Die-cut sentiment
- ☐ Regal Gold Candi
- ☐ Gold sequins

Season's greetings

- 1 Create a 15x13cm white card blank.
- 2 Trim night sky backing paper to 14x12cm, mount onto blue backing paper or card measuring 14.5x12.5cm and fix to the card front.
- 3 Cut the topper to measure 10x12.5cm leaving a border of white and double mount onto blue backing paper or card measuring 11x13.5cm followed by 11.5x14cm white card. Fix to the card front centrally and overlapping the top edge of the card blank by approx. 3cm. Stick three sequins onto the top left hand corner.
- 4 Mount a die-cut sentiment onto gold mirri card and using foam pads, place at the foot of the topper.
- 5 Add gold Candi to the bottom left and right hand corners of the card to finish.



Christmas wishes

- 1 Create a 15x18cm card blank from cream card.
- 2 Trim night sky backing paper to 14x17cm, mount onto orange card measuring 14.5x17.5cm and fix to the card front.



What do I need?

- ☐ Making Cards Craft Papers MC098CE16, MC100CE16, MC111CE16
- ☐ Cream, navy, orange and gold mirri card
- ☐ Die-cut sentiment
- ☐ Gold sequins
- ☐ Clear adhesive gems
- ☐ Large adhesive square pearls
- ☐ Twine

- 3 Create a panel of blue backing paper measuring 3x17cm, mount onto orange card measuring 3.5x17cm and fix onto the card front, vertically, approx. 2cm from the right edge.
- 4 Cut the nativity scene to 12x7.5cm and double mount onto gold mirri card, followed by navy card. Using foam pads, attach the topper across the centre of the card. Add a gold sequin to the centre of the star and place a gem in the middle.
- 5 Wrap twine, six times around your hand and using a smaller piece of twine, tie around the centre to create a bow. Fan out the loops. Mount a circular die-cut sentiment onto gold mirri card and stick to the centre of the bow using foam pads. Attach on the left side of the topper.
- 6 Add small adhesive gems to the stars on the night sky backing paper and two square pearls to the top and bottom of the border strip to finish.

Make these cards by signing up to receive the bonus craft papers to match this set sent within our monthly newsletter. Sign up at www.makingcardsmagazine.com

Just hanging

- 1 Cut and fold white card to create a 14cm square card blank with the fold at the top.
- 2 Cut green swirl backing paper to 13cm square, mount onto Kraft card cut to 13.5cm square and fix onto the card front.



What do I need?

- ☐ Making Cards Craft Papers MC03CE16, MC05CE16, MC12CE16 PAPERS X 2)
- ☐ Silver and green greeting ribbon
- ☐ Red adhesive gems

- 3 Cut a piece of the bonus tree backing paper to 8.5x11cm, mount onto Kraft card measuring 9x11.5cm and stick at an angle.
- 4 Cut a strip of the red striped backing paper to 13x4cm and mount onto Kraft card measuring 13x4.5cm leaving a narrow border on the long top and bottom edges only. Wrap silver ribbon horizontally around the panel and green sentiment ribbon to top securing the ends behind. Fix to the card front 2cm from the bottom edge.
- 5 Trim the topper to 7.5x10cm, mount onto Kraft card cut to 8x10.5cm and attach as shown with foam pads. Add a red adhesive gems to each corner to finish.

What do I need?

- ☐ Making Cards Craft Papers MC60CE16, MC62CE16
- ☐ Red, cream, green and gold mirri card
- ☐ Red seam binding
- ☐ Paper poinsettia
- ☐ Red berry
- ☐ Glossy Accents
- ☐ Small green adhesive pearls
- ☐ 2" Holly Leaf Punch by Woodware

Happy holidays

- 1 Create a cream card blank measuring 15cm square and with the fold at the top.
- 2 Cut a piece of the floral bonus backing paper to 14cm square, mount onto red card measuring 14.5cm square and fix to the card front.
- 3 Cut a further strip of the paper to measure 14x4cm and mount onto red card measuring 14x4.5cm. Wrap red seam binding horizontally around the panel securing the ends at the back. Secure the border strip across the card as shown.

- 4 Double mount the topper onto red then gold mirri card and fix to the card as shown using foam pads. Add a green adhesive pearl to each corner.
- 5 Tie red seam binding into a scruffy bow and fix on the left side. Attach a poinsettia to the centre. Punch a green holly leaf and shape the leaf around a pencil. Attach the leaf, together with a berry to the ribbon arrangement to finish.



Inside your NOVEMBER issue of...

Making Cards



3D firs



Stunning designs



Pretty papers



Pop-up designs



Comedy at Christmas



Seasonal stamping



For other occasions

PLUS!

Your FREE exclusive Making Cards Craft Paper Collections:
Pet Pals at Christmas & Blusher the Reindeer



Don't miss out on ideas and inspiration, fantastic giveaways,
hints and tips and all the latest from the world of cardmaking!

www.makingcardsmagazine.com

ON SALE
FRIDAY 4th NOVEMBER

Available at:

ASDA

M

MORRISONS

Sainsbury's

TESCO

hobbycraft

and your local
craft shop



Signature Dies

www.joannasheen.com



Christmas Shopping

SD425

£8.99

Size of Dies (approx):
Lady: 48 x 90mm
Scotty Dog: 46 x 28mm



Rudy the Reindeer

SD427

£4.99

Size of Die:
40 x 77mm (approx)



Winter Snowflake

SD431

£5.99

Size of Die:
58 x 65mm (approx)



Twelve Days of Christmas

SD429

£16.99

Size of Die:
100 x 147mm (approx)

These dies work with most tabletop die cutting machines, such as the Cuttlebug, Big Shot, Grand Calibur etc



Christmas Day

SD251

£4.99

Size of Die:
46 x 62mm (approx)



Little Santas Sleigh

SD450

£4.99

Size of Die:
91 x 25mm (approx)



Winter Walk

SD426

£14.99

Size of Die:
127 x 92mm (approx)



Large Snowflake Corner

SD434

£7.99

Size of Die:
90 x 90mm (approx)



Deep Snowflake Border

SD430

£9.99

Size of Die:
152 x 51mm (approx)

FREE Postage and Packing on orders over £9.00. For orders under £9.00 a charge of £1.50 P&P will be applied.

Order Form

Full Description/SD Code	Qty	Total
ADD £1.50 P&P if order value under £9.00		

TOTAL ORDER VALUE £

Your preferred method of payment

- ☐ Cheque/Postal Order - made payable to 'Joanna Sheen Ltd' (name and address on back of cheque/postal order please)
- ☐ Credit/Debit Card

Card Number

Expiry Date CVC Number *The last 3 digits on the reverse of the card.*

Mr/Mrs/Miss

Address

Postcode

Tel No (in case of queries)

Email

Please send order form to - Joanna Sheen Limited, Victoria Farm, Stokeinteignhead, Newton Abbot, Devon TQ12 4QH
You can also order by telephone - 01626 872405 (Mon - Fri 9.30am - 4pm), or order online at www.joannasheen.com

Order online at www.joannasheen.com or use order form above



NEW DESIGNED BY
JANET MACHON

Seasonal sliders

"I couldn't wait to get my hands on these adorable Lawn Fawn stamps - I wanted to show them off in the best way. Then the idea of a slider came to me! The perfect way of showing their simplicity but with the added fun of movement on a card!" *Janet*

What do I need?

For all cards

- ☐ White card
- ☐ Jewel paper pad by Avery Elle
- ☐ Corner rounder punch
- ☐ Slide on over stamp set, Toboggan together stamp set and Large cross-stitched circle die by Lawn Fawn
- ☐ Die-cutting machine
- ☐ Black Memento inkpad
- ☐ Tumbled Glass Distress inkpad
- ☐ Clear Wink of Stella

Snowmen

All items above plus:

- ☐ Ready, steady snow stamp set by Lawn Fawn
- ☐ Frayed Leaf and Forest Glades inkpads by Altenew
- ☐ Banner die by Avery Elle

Snowmen

1 Create an 11x14cm white card blank with the fold at the top. Cover the card front with red dotted paper and round the corners with your corner rounder punch.

2 Die-cut two cross-stitched circles from white card. On one circle die-cut the slider hole. On the other circle die-cut two small hills.

3 Die-cut a banner shape from white card and stamp 'Merry Christmas' across it. Attach across the top of the card front.

4 Use black ink to stamp the snowmen on white card. Colour these with marker pens and cut out. Stamp four trees in different sizes using green ink and trim to size.

5 Blend Tumbled Glass ink along the top of the circle with the slider hole. Stamp a snowflake randomly over this inked area. Ink a small piece of white card with the same colour and keep to one side. This will go behind the slider hole.



We ♥ Shopping!

Why not try the same design but with one of this selection of adorable stamps?



Animal Blessings Christmas by Hero Arts, £14.00
www.craftie-charlie.co.uk

Jump for joy by Lawn Fawn, £10.50
www.sprinkle-twinkle.co.uk

Newton's Christmas Cuddles
by Newton's Nook Designs, £10.50
www.sevenhillscrafts.co.uk



6 Adhere the die-cut hills to the bottom of the circle. Add the trees around the circle and one stamped snowman to the right-hand side of the slider hole.

7 Use a double layer of foam pads to attach the circle to the card front, keeping the area around the slider hole free. Make sure to add the small inked piece from Step 5 in place behind the slider hole.

8 Insert a penny into the slider hole with a foam pad on top of it. Add the other stamped snowman to the foam pad to form your slider. Make sure the snowman slides along the slider hole.

9 Finish by applying Wink of Stella to the body of each snowman for added shine.

What do I need?

Deer

All items at start plus:

- ☐ Watercolour pencils by Faber Castell

Deer

1 Create an 11x14cm white card blank with the fold at the top. Cover the card front with red striped paper from the paper pad and round the corners.

2 Die-cut two cross-stitched circles from white card. On one circle die-cut a sloped hill and a slider hole.

3 Use black ink to stamp two deer from the stamp set on white card. Colour with watercolour pencils and cut out.

4 Blend Tumbled Glass ink around the middle and bottom of the die-cut circle. Stamp some snowflakes over this inked area. Use black ink to stamp 'to a deer friend' in the top left of the circle.



5 Adhere the large circle to the top of the card front. Use a double layer of foam pads to attach the sloped hill to the bottom of the circle, leaving the area around the slider hole free.

6 Insert a penny into the slider hole and add a foam pad on top. Attach one of the stamped deer to the foam pads to create your slider. Make sure the slider can move along the slider hole. Fix the other stamped deer to the right of the circle, sitting behind the slider.

7 Use black ink to stamp 'Merry Christmas' along the bottom of the card front. Finish by adding Wink of Stella to the body of each deer for added shine.



Where can I buy it?

All items available from www.thelittlepapertree.com.

What do I need?

Penguins

All items at start plus:

- ☐ Stitched Mountain die by Lawn Fawn
- ☐ Watercolour card

Penguins

1 Create an 11x14cm white card blank with the fold at the top. Cover the card front with green square paper from the paper pad and round the corners.

2 Die-cut two cross-stitched circles from watercolour card. On one circle use the Stitched Mountain border die along the top and also a slider hole towards the bottom.



3 Use black ink to stamp two penguins on watercolour card. Colour with marker pens and cut out.

4 Blend Tumbled Glass along the bottom of the full die-cut circle. Blend the same ink towards the bottom of the mountain circle, around the slider hole.

5 Adhere the full circle to the top of the card front. Place a double layer of foam pads around the edges of the mountain circle and fix on top of the first circle.

6 Place a penny into the slider hole. Add a foam pad on top of the penny, then add a stamped penguin to the foam pad. This creates your slider, make sure it can move freely along the slider hole.

7 Stick the other stamped penguin to the left of the slider. Add Wink of Stella to the body of each penguin for added shine.



8 Finish by stamping 'Happy holidays' across the bottom of the card front with black ink.

Stamp Magic

The Incredible Stamping & Paper Craft Show

THE DOME (LAKESIDE)
DONCASTER DN4 7PD

Sunday 16th October 2016

& **Sunday 4th June 2017**

10 am - 4 pm

Organised by
Which Craft ? Doncaster

For Tickets Sales

www.whichcraftuk.co.uk

Tele: 07834196892

Supported by **HOCHANDA**
HOME OF CRAFTS HOBBIES AND ARTS

The North's Leading One Day Show

BACK WITH A BANG

CRAFTS4U2DO

Crafts4U2Do, along with our sister business, Sweet Lilac have recently moved to a new purpose-made shop and storage facility.

It's taken a while but now we are back,
BIGGER, BETTER and BOLDER than ever before.

We have hundreds of ranges including flowers, dies, cards, inks stamps, embellishments and much, much more.



Check out our latest updates online and on facebook along with our official open day schedule and list of demonstrations and offers

www.facebook.com/crafts4u2do
www.sweetlilac.co.uk



NEW STORE ADDRESS

**CRAFTS4U2DO/SWEETLILAC, UNIT 4, PARK COURT, SULLIVANS WAY,
SHERDLEY BUSINESS PARK, ST HELENS WA9 5GZ TEL: 01744 611940**



DESIGNED BY
MICHELLE JOHNSON

Sending a Stamped Noel

"I have chosen traditional Christmas colours of red and green to create a male theme but you don't necessarily have to use Christmas paper - just take a look through your stash and see what looks good together!" *Michelle x*

What do I need?

For all cards

- ☐ 6x6 Tis the Season paper pad, Noel Tag stamp (FRS623) and 1cm star punch by Woodware
- ☐ VersaFine black inkpad

Noel 1

All items above plus:

- ☐ White card
- ☐ Clear adhesive gems

Noel 1

1 Create a 14.4x10.3cm white card blank with the fold at the top. Cover the card front with light green paper from the paper pad and distress the short edges.

2 Stamp 'Noel' centrally on the card front and the same again on red striped paper and burgundy snowflake paper. Cut out each letter on the two papers.

3 Position the letters on the card front and secure the 'N' and the 'e' directly onto the surface and the 'o' and 'l' using foam pads.

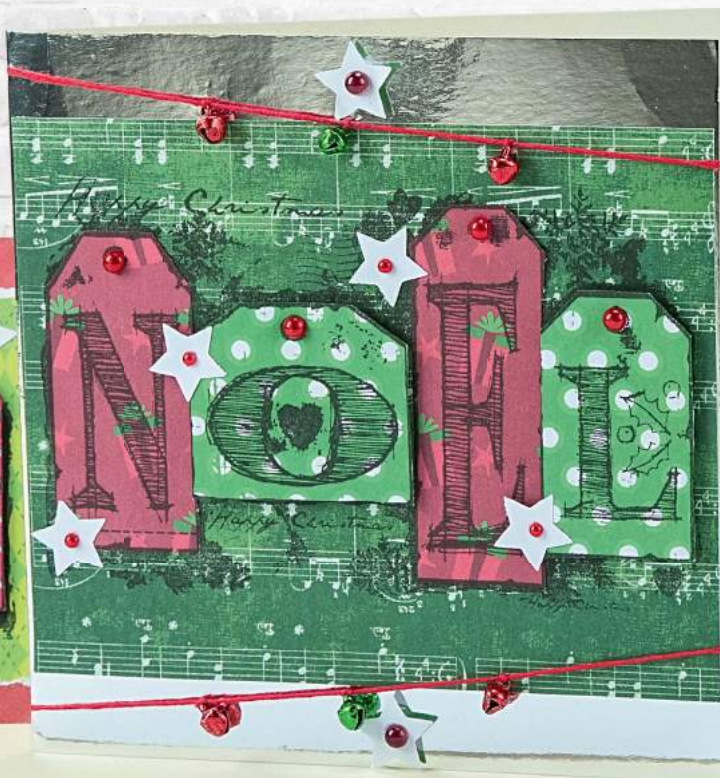
4 Tear two 1cm strips of burgundy paper. Fix to the top and bottom of the card front and trim the excess flush.

5 Carefully draw and cut out five stars from white paper/card and fix to the card front around the stamped letters.

6 Finish by adding a clear adhesive gem to the top of each stamped letter.

Where can I buy it?

Small bells available from
www.hobbycraft.co.uk (0330 026 1400).



What do I need?

Noel 2

All items at start plus:

- ☐ Silver mirri card
- ☐ Red adhesive pearls
- ☐ Red twine
- ☐ Small green and red bells

Noel 2

1 Create a 14.5x15cm card blank from silver mirri card. Cut a piece of green music paper from the paper pad to measure 14.5x11.5cm and fix to the centre of the card front.

2 Stamp 'Noel' centrally on the music paper, then stamp again onto red parcel paper and green dotted paper.

3 Cut out each letter and stick along the music paper, attaching the 'N' and 'e' directly to the paper and the 'o' and 'l' using foam pads.

4 Draw and cut out six stars from white paper/card and attach randomly around the card front, including the very top and bottom. Add a red pearl to the centre of each star.

5 Finally make a small hole along the fold in the card 1cm from the top and 1cm from the bottom. Tie strips of red twine around the card front, going through the small holes and threading red and green bells as you go. Secure the ends at the back.

What do I need?

Noel 3

All items at start plus:

- ☐ White card
- ☐ Red twine
- ☐ Clear adhesive gems

Noel 3

1 Create a 14.5x10.5cm white card blank with the fold at the top. Cover the card front with striped paper from the paper pad leaving a 5mm border at the top and bottom.

2 Stamp 'Noel' centrally on the card front and again onto red parcel paper and green dotted paper from the paper pad. Cut out each letter and fix across the card front. Attach the 'o' and 'l' directly to the card front and the 'N' and 'e' using foam pads.

3 Carefully draw and punch out four stars from white paper/card and fix to the card front around the stamped letters.

4 Wrap red twine twice around the top of the card front, securing the ends in a knot in the centre.

5 Finish by adding clear adhesive gems to the top of each stamped letter.

What do I need?

Noel 4

All items at start plus:

- ☐ Silver mirri card
- ☐ Red adhesive pearls

Noel 4

1 Create a 14.5x13.5cm card blank from silver mirri card. Cut red paper from the paper pad to measure 14.2x12cm and stick to the centre of the card front.

2 Stamp 'Noel' centrally on the card front and the word again onto red striped paper, green tree paper and burgundy snowflake paper.

3 Cut out the letters from the green tree paper and stick in place on the card front. Cut out the 'N' and 'e' from the red striped paper and attach in place using foam pads. Cut out the 'o' and 'l' from the tags on the burgundy paper and layer on the green tree tags.

4 Draw and cut out one star from white paper/card and attach to the top left of the card front. Add a red pearl to the star and also to the top of each stamped letter.

5 Make a small hole in the fold of the card 2cm from the bottom. Wrap red twine around the bottom of the card front, threading it through the small hole and tying in a bow in the centre.





DESIGNED BY
FAYE WYNN-JONES

Hog heaven!

"I was squealing with excitement when I spotted this 'Hog heaven' stamp set by My Favorite Things in the October issue! Not only are these pigs completely adorable, but they instantly inspired at least three cards which kept me busy in my 'office' for a few hours. That was my excuse for not cooking dinner, anyway..." *Faye xx*

FAYE SAYS...

I played around with different colour combos for each of the pigs, because pigs, like people, are all different!

After I had inked the cloudy background on the 'hog heaven' card, I went in with a BG70 marker and added some extra colour to deepen the shading on some of the clouds.

If you want to make your wood look a little more weathered, add a wash of grey over the top of the coloured fence.

Hog heaven

1 Create a 12cm square card blank from white card and position with the fold at the top. Cut a piece of white card to 11.5cm square.

2 Die-cut the cloud border from scrap white paper/card.

3 Put some of the BG70 re-inker onto a craft mat. Position the cloud die-cut

What do I need?

For all cards

- ☐ White card
- ☐ Selection of Copic marker pens (see guide)
- ☐ Copic re-inker
- ☐ Copic multi-liner
- ☐ Hog heaven stamp set by My Favorite Things

Hog heaven

All items above plus:

- ☐ Glitter
- ☐ Flat Bottom Clouds Die-Namics

at the top of the square of white card. Use a make-up sponge to pick up some of the ink and dab it along the edge of the cloud border. Move the cloud die-cut around the card, repeating the process until the card is covered in clouds.

4 Stamp the sentiment in the top left corner of the cloud panel and doodle a border around the edges.

5 Die-cut a cloud border from a corner of white card and doodle a border in the corner as shown. Fix to the bottom left corner of the panel using foam pads.

6 Stamp a pig and colour using the following Copics; R000, R00, R30, R21 and W3. Carefully cut around the edge of the pig and add glitter to the wing. Fix to the right-hand side of the panel using foam pads.

7 Attach the cloud panel to the centre of the card front to finish.

I'M IN HOG HEAVEN
When You're Around



Want to learn to colour like Faye?

Join Faye for a weekend of colouring at Dies To Die For, Surrey, on Saturday 29th and Sunday 30th October. Find more information at www.staminfuffnstuff.co.uk



Miss you pig time

1 Create a 14.5x10.5cm white card blank with the fold at the top. Cut a piece of white card to measure 14x10cm.

What do I need?

Miss you pig time

All items at start plus:

□ Heart Stax Die-Namics

2 Stamp a row of five pigs along the bottom of the card panel. Colour the fourth pig from the left using the following Copic; E01, E02, RV42, R32 and W3.

3 Doodle a border around the edges of the card panel, making it look like the pigs are peeping over the top. Attach the panel to the centre of the card front.

4 Stamp the sentiment in the top left of the card front.

5 Die-cut an assortment of different sized hearts from white card and attach them randomly to the card front using foam pads.

Fancy trying Kelly's project?

Order your copy of Making Cards October 2016 from www.makingcardsmagazine.com Or call: 01778 395171



Oink

1 Create a 10.5cm square white card blank and position with the fold at the top. Cut a piece of white card to 10cm square.

2 Die-cut two clouds and a piece of grass from white card.

3 Stamp the fence on the left of the card panel and the pig on the right. Colour the images and die-cut grass using Copic marker pens, following the guide below.

4 Doodle a border around the edges of the card. Stick the card panel to the centre of the card front.

5 Stamp the sentiment in the top right of the card.

6 Trim a portion of the coloured grass die-cut and attach it along the bottom left of the card, along the front of the stamped fence using foam pads. Layer the two clouds together and fix to the top left of the card using foam pads.

What do I need?

Oink

All items at start plus:

□ Chunky Grass Die and Puffy Cloud Border Die by Your Next Stamp



Where can I buy it?

Stamps and dies available from www.diestodiefor.com.

Guide to Copic markers pens:

PIGS:..... E01 (SKETCH), E02 (CIAO), RV42 (CIAO), R000 (CIAO), R00 (CIAO), R11 (CIAO), R12 (SKETCH), R21 (SKETCH), R30 (SKETCH), R32 (CIAO), W3 (CIAO)

GRASS:..... YG01 (SKETCH), YG03 (CIAO) YG63 (CIAO), YG67 (CIAO)

FENCE/CAKE:..... E31 (CIAO), E33 (CIAO), E99 (SKETCH), W3 (CIAO)

CAKE ICING/METAL:... C0 (CIAO), C1 (CIAO), C3 (CIAO), C5 (CIAO)

CHERRY:..... R35 (CIAO), R39 (SKETCH)

SKY:..... B G70 RE-INKER

DEAR MAKING CARDS

If you'd like to share your crafting thoughts with other readers then send us a letter or email. It's great to hear from all of you and find out what crafty things you have been getting up to, the trends you like, projects in the magazine you really enjoyed, the craft club you attend or just that you love cardmaking in general!

Lovely letter

Dear Making Cards,

Let me tell you how much I love your magazine! I picked up the October issue this week and it's full of cute and fun cards (I had to laugh out loud when I spotted the card with the witch in the cauldron!). Being a big fan of American brands (and Kitty's and Faye's work), I always discover some new cute stamp sets in your magazine that I want to try. I bought the MFT Hog Heaven stamps today. Thanks for introducing me to Faye and her stunning cards, I'm now in touch with her for Copic classes. I also like the personal touch that you added on the welcome page. Talking about 'treats', I'm considering treating myself to a subscription of Making Cards (or talking my hubby into it!). What I like most about your magazine is that some of your talented designers make some stunningly clean and simple cards which is just up my street. Others get arty with inks, something that I'd like to try one day. I love the fresh and young look of Making Cards.

I can't wait for the next issue. Keep up the good work!

Best Wishes,

Nicole

What a lovely letter to read Nicole. So glad you enjoy the magazine so much! Sally x

Star
letter



First time reader

Dear Making Cards,

Bought your magazine for the very first time, loved the free papers that came with! Sprinkles is sooo cute! Your 'how to's' are very easy to follow. Thank you so much.

Mandy Robson

Welcome to Making Cards Mandy! Sprinkles was pretty cute - we've some more adorable designs coming soon so watch this space! Sally x

Under the sea

Dear Making Cards,

I loved both sets of papers in the July edition, but it was the mermaids that got my fingers itching. I gave the mermaid her own little undersea world, with a pearlised rock to sit on, fussy cut sea creatures and decorated her with pearls and just a dab of glitter glue on her tail which I curled forward. I was particularly pleased with the sequins I found in my stash as well as being just the right colour of blue, they are also translucent so you can see the seaweed through them just like real bubbles (not sure if they show up well on the photo). I only had 5, but it was enough - just goes to prove you should never throw anything away! Hope you like my mermaid, this is the first card I've made with your papers which I think is original enough to send in to you. I loved the CD with the August edition with all the 2015 papers on it - hope you're going to repeat this for the 2016 papers in the future. Also, what about previous years? I'd certainly love to have 2013 and 2014 - maybe you could sell them if you don't want to give them away? As an idea for a feature, what about how the designers finish off the insides of cards? We spend so much time on the outside, the insides need a little TLC too - I could do with some inspiration. Still love the mag, it's the best around and the only one I subscribe to - keep up the good work!

Kind regards,

Liz Wilmott

Lovely card Liz - you're right, never throw anything away!! Sally x



Fabulous fold

Dear Making Cards,

I learnt this kite fold card on Friday from my friend Lyndsey Turner, so I thought I'd try it out with the A Touch of Magic craft papers. It gives a tie-dye type of effect.

Suse Stone

Fabulous folding Suse! Sally x



First Christmas cards

Dear Making Cards,
1st Christmas cards made with the
Xmas 2016 papers x
Andrea Mattin

Lovely cards
Andrea! Sally x



Cracking Christmas card

Dear Making Cards,
Here's my first card using the stunning
free papers from the Christmas special
magazine, I added glitter glue and a few
gems for added sparkle x
Ursula MacLennan

Beautiful Ursula! Sally x



Stepping into Spring down under!

Dear Making Cards,
Thank you for showing my cards in your July magazine!
Here in Australia were just going into spring. I hope you
recognise your free papers on my first card, the second
card is something I wish I could see again the red squirrels,
such delightful little creatures. All the best from Oz!
Nadine Glover

You're welcome and we're happy to show these off too! Sally x



facebook

Awesomel

Dear Making Cards,
Made my first Christmas cards today
I'm really pleased with them I used
some white glitter to make the
snow stand out on the garland - this
magazine is outstanding and the CD
ROM is awesome!
Jessica Young

Thank you so much Jessica! Sally x



Keep up the good work!

Dear Making Cards,
Love Love Love your magazine. I've have
gotten so many compliments on all the
cards I've made with your free papers and
Idea sheet. Barnes & Noble is the book
shop I find most of the British magazines.
Jo Vinson, California.

Love, Love, Love your letter Jo! Sally x

The WOW factor!

Dear Making Cards,
Just received my Xmas edition - WOW!!!!
Going to enjoy working with it, thanks!
Joan Bennison

It is pretty packed full of fab ideas isn't it! And with the
CD Rom you can make forever! Sally x

Birthday drinks

Dear Making Cards,
Hello! I thought I'd
share this card with
you which I made for
my friend's birthday
today, using a cocktail
drinks topper and
backing paper from
the August issue,
with some added
gems, ribbon and sentiment
from my stash. She loved it!
Beverley Patel

We love it too Beverley! Sally x



Please send your letters to:

If you want to share your craft news with other Making Cards readers then send your crafty letters and photos to:
Dear Making Cards, Warners Group Publications PLC, The Maltings, West Street, Bourne, Lincolnshire PE10 9PH
or email makingcardsletters@warnersgroup.co.uk
The star letter will receive a crafty gift!



DESIGNED BY
DEB STEELE

Feeling festive

"I have been feeling festive this month and couldn't decide which colour scheme to go for; red, green or Winter wonderland white - so I chose to use all three! I kept the designs simple using layering, Christmas die-cuts and pretty bows and gems to finish."

What do I need?

For all cards

- ☐ White card
- ☐ The Magic of Christmas paper pad by Craftwork Cards

Joy to the world

All items above plus:

- ☐ Kraft, red and dark green card
- ☐ Grace dies from the Frames and Tags collection by Sue Wilson for Creative Expressions
- ☐ Pine Bough die by Ultimate Crafts
- ☐ Large and Small Poinsettia dies and Holly die by Robert Addams
- ☐ Die-cutting machine
- ☐ Sentimentally Yours stamp by Phil Martin
- ☐ Gold embossing powder
- ☐ Red and gold ribbon
- ☐ Red adhesive gems

Joy to the world

1 Create a 20cm square white card blank. Cut a 19cm square of Kraft card. Cut two panels of red dotted paper from the paper pad measuring 18.5x8cm and distress the edges. Fix to the top and bottom of the square, making sure there is an even border along the outer edges. This will leave a space in the middle.

2 Wrap red ribbon around the middle of the square, securing the ends at the back. Attach the square to the centre of the card front.

3 Die-cut the largest Grace die from red card. Die-cut another large shape using the Grace dies from Kraft and trim away the scallops. Layer together and fix to the centre of the card front with foam pads.



4 Die-cut the Pine Bough twice from Kraft card and trim away the bird from both pieces. Insert around the die-cut on the card front and secure in place. Die-cut some holly branches from dark green card and secure around the die-cut inbetween the pine boughs.

5 Die-cut a selection of large and small poinsettias from red card. Layer them together to form a large and a small poinsettia and fix to the top right and bottom right of the die-cut on the card front.

6 Stamp the sentiment on Kraft card, sprinkle with gold embossing powder and shake away the excess. Add heat to set. Trim a shape around it and fix to the die-cut on the card front using foam pads.

7 Make a bow using gold ribbon and fix to the bottom left of the die-cut. Finish by adding a red adhesive gems to the card front.



Where can I buy it?

Paper pad available from www.loobcrafts.co.uk (01525 838535).

Grace dies available from www.sunrisecrafts.co.uk (01902 897096).

Pine Bough die available from www.cardmakingneeds.co.uk (01202 697744).

Robert Addams dies available from www.papercrafts.co.uk (01784 452041).



Merry Christmas

1 Create a 20cm square white card blank. Cut Kraft card to measure 19cm square and dab Evergreen Bough ink along the edges. Mount on dark green card, trimming a thin border along each side. Fix to the centre of the card front.

What do I need?

Merry Christmas

All items at start plus:

- ☐ Kraft and dark green card
- ☐ Hessian
- ☐ Evergreen Bough Distress inkpad
- ☐ Brown adhesive pearls

2 Cut music paper from the paper pad to measure 18cm square, dab Evergreen Bough ink along the edges and fix to the centre of the card front.

3 Cut cream swirl paper from the paper pad to 6.5x15cm and Kraft card to measure 8x16cm. Dab Evergreen Bough ink along the edges of each piece. Mount them on dark green card, leaving a thin border along each edge. Fix the cream swirl panel horizontally across the bottom right of the card front and the Kraft card panel vertically down the right of the card front.

4 Add a length of hessian down the centre of the Kraft card panel, trimming the ends slightly longer than the panel.

5 Select the robin image from the paper pad and trim to measure 12.5x7.5cm. Mount on a slightly larger piece of dark green card and fix to the right-hand side of the card front using foam pads, on top of the hessian.

6 Make a bow from gold ribbon and fix to the bottom left corner of the robin panel.

7 Finish by adding a brown adhesive pearl to each corner of the card front, the robin panel and the Kraft card panel.

Season's greetings

1 Create a 20cm square white card blank. Die-cut the largest Sue Wilson square die from white card and stick to the centre of the card front. Die-cut the next size down from white card and attach to the centre of the card front with foam pads.

What do I need?

Season's greetings

All items at start plus:

- ☐ White glitter card
- ☐ Red flock paper
- ☐ Pierced squares dies by Sue Wilson for Creative Expressions
- ☐ Season's Greetings die by Robert Addams
- ☐ Holiday die by Spellbinders
- ☐ Die-cutting machine
- ☐ Red adhesive gems

2 Die-cut the next size down from bells paper from the paper pad. Fix to the centre of the die-cut on the card front.

3 Die-cut white glitter card using the Holiday die and fix to the centre of the bells paper using foam pads.

4 Die-cut a label from the same Holiday die set from white card. Fix in place on the card front using foam pads.

5 Die-cut the greeting and the bow from red flock paper and fix to the label on the card front. Finish by adding red adhesive gems to each corner of the card front and also to the edges of the die-cut label.





Joanna Sheen's *Inspirations*

CHRISTMAS EDITION 2016

Pets at Christmas

All my life the family pets have given the rest of the family a Christmas gift – daft I know, but I have very happy memories as a child of little presents from the cats and dogs – thank you Mother! I used to ask how they bought the presents and for years was satisfied with the answer that they saved their dog/cat food labels off the tins and traded them in. Ok, ok I realise you are giggling at me, but hey it seemed like a perfectly understandable answer to a small child!

Currently Richard and I don't have a pet – our dear Wellington spaniel will have been gone for two years this Christmas and as yet we just haven't had the heart to replace him. It's also such a lot of work to get the training right and looking after a young pup really hasn't been on the cards recently.

But the time will come, I adore spaniels (well I love all dogs) and can't imagine I will hold out for very much longer. Maybe another year or so while I get accustomed to being back on TV again!

Luckily my older daughter (little granddaughter Grace's Mum) has a large, floppy and extremely daft golden retriever, so we spend a lot of time with him.

His name is Mouse ... (yup) ... the only thing is it suits him utterly, he is wary of his own shadow and once when a little butterfly landed on his nose, you'd have thought he was being threatened by a dinosaur! So we will be continuing the tradition and I will wrap up little presents for every from Mouse and hopefully Grace will accept the same answer my Mother gave me about how he paid for them!

I always jump at an opportunity to include animals in my Christmas cards and our Signature Dies this Christmas include these two doggy designs – beautiful!

Smiles

Joanna

A Winter walk

EXCLUSIVE TO
MAKING CARDS
MAGAZINE!

What do I need?

White and black card, Winter Walk (SD426) and Cutwork Holly Border (SD428) Signature Dies, black/white gingham ribbon and a die-cut sentiment

How do I make it?

Fold a piece of white A4 card in half to create an A5 card blank in landscape form. Die-cut the holly border down the right side. Line the inside of the card front with black to show through. Trim white card to measure 16x13cm and mount onto black card measuring 16.5x13.5cm. Wrap black and white gingham ribbon horizontally around the panel securing the ends behind. Fix the panel on the left side of the card front. Die-cut the winter walk die from black card and fix onto white card. Trim around the edges with scissors and use foam pads fix onto the card front. Attach a die-cut sentiment of your choice with folded ribbon behind, the ends trimmed to a point, to the top right corner of the die-cut. Tie a bow in more of the same ribbon and add to the border below the die-cut to finish.



Christmas shopping

What do I need?

Kraft, pearlescent red, green, white, black, cream and gold card, Christmas Shopping (SD425) and Cutwork Holly Border (SD428) Signature Dies, Plain and Scalloped Nesting Circle Dies, photo corner punch, gold satin ribbon, red button and a die-cut sentiment.

How do I make it?

Create a 15cm square card blank from Kraft card with the fold on the top edge. Cut a piece of Kraft card to measure 14cm square and die-cut the holly border across the bottom then mount onto pearlescent red card measuring 14.5cm square. Die-cut the holly border again from green card and use the holly leaves from this second die-cut to fill in the leaf shapes on the main panel as shown. Wrap gold satin ribbon around the panel above the die-cut border and fix at the ends at the back. Use foam pads to fix the panel onto the card blank. Cut a Kraft card circle measuring approx. 9.5cm in diameter and mount onto a slightly larger scalloped edge circle of red card. Fix in the centre of the card. Die-cut the Christmas Shopping die a number of times in cream, white, red, gold, black and Kraft card and use paper piecing to create a coloured figure as shown. Fix the lady and Scottie dog in place using glue gel. Add photo corners to the top corners of the card and finish with a sentiment, bow and button to finish.



For more information about Joanna Sheen products visit www.joannasheen.co.uk or call 01626 872405.



Great crafts at Great Prices
for Papercraft Supplies

Top Brands - Low Prices - Free Delivery

craftexcess.com
customerservices@craftexcess.com
01787 375241

**MERLY
impressions**

Kaisercraft Specialist

We sell thousands of Kaisercraft products...

- Beyond-the-Page MDF Products
- Scrapbook Papers & Paper Pads
- Decorative Dies & Stamps
- Colouring Books and Pens
- ...and much more

We also stock products from
ScrapFX, Ranger & Lavinia Stamps



Visit our online store at :
www.merlyimpressions.co.uk



**4nt Crafty Christmas
Breaks from £444pp!**

All breaks 23rd-27th are Full Board
& Include lots of fantastic extras!

**TheManor
House
&
Ashbury
Hotels**



Our breathtaking venues
boast a range of craft, sport &
leisure facilities that we believe are
without equal anywhere in the UK! Our unique
craft centre offers 17 tutored crafts including:

- Pottery
- Pottery Transfers
- Porcelain Painting
- Candle Making
- Enamelling
- Hot Press Printing
- Fabric Painting
- Silk Painting
- Card Making
- Painting
- Sketching
- Embroidery
- Glass Painting
- Glass Engraving
- Jewellery Making
- Woodwork
- AND MORE!

All facilities are FREE to residents with
the exception of nominal material
costs in the Craft Centre.

Classes
available every
day including
Christmas
Day!

"A great place for crafters" - Trip Advisor

activityhotelbreaks.co.uk
0800 955 0283

Parchment Craft



GREAT REASONS TO GO DIGITAL...

- ★ SAVE money
- ★ GET your guaranteed copy before it is in the shops
- ★ Quick and easy to download
- ★ NO postage fee

**Subscribe
from just
£2.99!**

SUBSCRIBE ONLINE WWW.PARCHMENTCRAFTMAGAZINE.COM



DESIGNED BY
SARAH
JACKMAN READ

Time to shine!

FIRST TIME
TECHNIQUE
IN MAKING
CARDS!

"I would love for you to amaze your friends and family when they receive a card that can light up the room! These cards are not only shaped differently from the norm but also have a little battery pack concealed at the back with a switch. Wait to see their faces as their card shines bright! Sarah."

Peace

1 Create a 17x12cm white card blank with the fold at the top. Lay the card flat on your work surface. Measure and mark 4cm, 8cm, 12cm, 16cm and 20cm from the top edge. Score 8.3cm horizontal lines from each mark. Use a craft knife to cut a vertical line from the end of the first horizontal line down to the end of the bottom line. Mountain fold the first, third (on both sides of the cut line) and fifth lines. Valley fold the second and fourth lines. Crease well to create your stepper card.

2 Cover the front of the stepper with paper from the paper pack. Cover the visible small steps with contrasting paper.

3 Layer up your chosen decoupage image with foam pads and attach to the top right of the card.

4 Wrap thin jute three times around the bottom of the stepper, securing the ends at the back.

5 Create housing for the LED light battery pack out of white card by sticking a thin strip to the back of the stepper, leaving a space in the middle for the LED pack to sit. Wrap the LED lights around the decoupage and across the front of the card, adding small dots of glue with a glue gun to hold them in place.

What do I need?

For all cards

- ☐ White card
- ☐ 12x12 Festive Fauna paper pack by Papermania
- ☐ Create Christmas LED White Light String and Matt Finish Jingle Bells by Papermania
- ☐ Bare Basics Natural Jute Set by Papermania
- ☐ Glue gun

Peace

All items above plus:

- ☐ Festive Fauna Postcard Mini Decoupage, Adhesive Wooden Alphabet, 3D Stickers and Star Garland by Papermania
- ☐ Clear embossing stamp pad
- ☐ White embossing powder



6 Add 3D stickers to the steps and to the top left corner of the decoupage. Select wooden alphabet letters to spell 'peace' and sprinkle with white embossing powder. Add heat to set. Attach the letters to the bottom left of the stepper.

7 Attach a star from the garland underneath the decoupage. Cut out a robin from a sheet of paper in the paper pack and stick on top of the star.

8 Thread thin jute through the top of a white bell, tie in a bow and fix to the left of the star.



What do I need?

Noel

All items at start plus:

- ☐ Festive Fauna Noel Mini Decoupage and Sticker Sheet by Papermania

Noel

1 Cut white card to measure 17x24cm and position with the shorter sides at the top and bottom. Measure and mark 3.5cm horizontal lines from the left and the right, 9cm from the top edge. Mountain fold these lines. Use a craft knife to cut 12cm vertical lines from the end of each 3.5cm line. Measure 3cm down from the end of each horizontal line and score a horizontal

line across. Mountain fold this line. Measure 6cm and 3cm up from the bottom edge of the card. Score 3.5cm horizontal lines from these marks. Valley fold the top lines and mountain fold the bottom lines. This creates your central stepper card.

2 Cover the central panel with grey paper from the paper pack. Cover the outer panel and the strip across the bottom with contrasting papers.

3 Cut a 1cm strip from dark grey paper and stick across the bottom of the stepper.

4 Layer up your chosen decoupage image with foam pads and attach to the central panel.

5 Attach two circular stickers to white card and cut out. Attach to the side panels using foam pads.



Where can I buy it?

Papermania products available from your local docrafts stockists. Visit www.docrafts.com to find your nearest one.

6 Create housing for the LED light battery pack from white card following Step 5 of the previous card.

7 Wrap the lights around the circular stickers and across the front, adding small dots of glue with a glue gun to hold them in place.

8 Wrap thin jute three times around the bottom of the stepper, securing the ends at the back. Thread the same jute through a white bell, tie in a bow and fix to the centre of the first pieces of jute.



Wish

1 Create a 15cm square white card blank with the fold at the top.

2 Cut two strips of white card 15x4cm and 8x4cm. Create a small tab on the

left short edge of each strip. Attach the larger strip to the bottom left of the card front and the short strip to the bottom right, tucking it round to the inside of the card.

3 Cover the card front with tree paper. Add a strip of dark grey paper across the top of the card front. Cover the small strips with grey paper, adding a thin strip of contrasting paper across the middle of the larger strip. Add a length of thin jute across the middle of the contrasting strip.



What do I need?

Wish

All items at start plus:

- ☐ Festive Fauna Star Garland, 3D Stickers and Adhesive Wooden Alphabet by Papermania
- ☐ Clear embossing stamp pad
- ☐ White embossing powder



4 Cut out a reindeer from a sheet of paper and attach behind the front larger strip on the left.

5 Create housing for the LED light battery pack from white card using Step 5 of the first card and fix to the back of the card front.

6 Wrap the lights across the top of the card front, adding small dots of glue with a glue gun to hold them in place. Fix stars from the star garland amongst the lights.

7 Select wooden alphabet letters to spell 'wish' and sprinkle with white embossing powder. Add heat to set. Fix the stickers to the larger strip.

8 Cut out some foliage and fix to the left-hand side of the larger strip. Thread thin jute through a white bell, tie in a bow and fix under the foliage.

YOUR CARDS

If you want to share your card designs with other Making Cards readers, simply send them to us with a few words on how they were made and what products were used. The chosen star card will win a set of top quality products courtesy of Fiskars!

This pretty design was created by Adrene with the focal point being one of the beautifully illustrated Arty Animals, exclusively provided as a Making Cards Craft Paper Collection. Adrene used a ScanNCut to create the decoration.

This card was sent in by contributor Sue Hasteed with her project this month – we hate to waste this talent and so share these also!

Elegant and sophisticated, this card made by Liz Futter from Spalding, Lincolnshire, uses the Graphic 45 Couture Collection with just an added bow and gold peel-off sentiment - beautiful.



You told us you loved Sprinkles The Unicorn, we did to! We also love this card by Linda Byne featuring Sprinkles and the coordinating backing paper with cleverly inked edges and essential glitter!

This lovely design was posted to Making Cards but with no letter or name! We thought them worthy of sharing so if these cards are yours – they are lovely! A great use of the June Flowers and Party Girls free craft papers provided with our June edition!

Show us yours...

We love to see the cards that you create, whether using the free craft papers provided with this magazine or some of the fantastic other brands. If you want to be in the chance of appearing on this page then send in your card with your name, address, a brief description of how it was made and the products used. Each month we pick one card to be our star card and receive a crafty prize so what are you waiting for!

This super card by Linda King uses the free A Touch Of Magic craft papers provided with the October edition of Making Cards. Linda has added lots of silver embellishment including a wonderful die-cut castle, mirri card and lots of sparkle!



This card uses the Making Cards Craft Paper Collection Fantastic Flowers from September in an iris pattern created by Rebecca Gillard. Rebecca printed a free pattern off the internet to host the folding then used an Xcut die to frame, flourish dies by Cheery Lynn to decorate and a Go Kreate oval die to mount a sentiment.



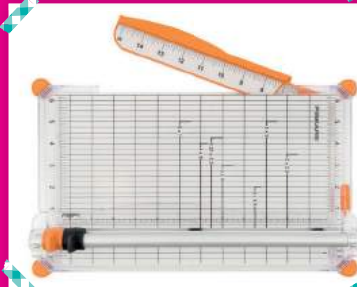
Shirley Paterson from Angus made these two adorable cards featuring a cute penguin teamed with pretty pastel Christmas patterns and all important Christmas sparkle!



Your chance to win!

EVERY MONTH OUR LUCKY STAR CARD WILL RECEIVE A NEW SURE CUT PAPER TRIMMER, TAG MAKER AND A PAIR OF FISKARS GENERAL PURPOSE SCISSORS COURTESY OF FISKARS!

FISKARS®



FISKARS CRAFT PRODUCTS ARE RENOWNED WORLDWIDE FOR THEIR FUNCTIONALITY AND CUTTING-EDGE DESIGN. THEIR MOST ICONIC PRODUCT, ORANGE-HANDLED SCISSORS WERE CREATED IN FINLAND IN 1967. THE ORANGE SCISSORS REVOLUTIONIZED THE EVERYDAY CUTTING EXPERIENCE BEING THE FIRST PLASTIC-HANDLED SCISSORS IN THE WORLD.

WWW.FISKARS.CO.UK

Send your designs to:

Your Cards, Making Cards, Warners Group Publications, West Street, Bourne, Lincolnshire, PE10 9PH.

Please note that unless specified, all cards sent in are donated to charity. Should you wish for your card to be returned please include a self-addressed stamped envelope.



DESIGNED BY
CHERYL MORGAN

Detailed decorations

"I love that these bauble stamps and dies can be used in so many ways! Here I have used only a few colours to make three cards look so different. It's refreshing to use a less traditional colour too - these will definitely stand out amongst the red and green cards on the mantelpiece!" *Cheryl*

Three baubles

1 Create a 14x20cm card blank using pink card. Cut white card to measure 12.5x18.5cm and lightly sponge the edges with Sweet Sugarplum ink. Fix to the centre of the card front.

2 Stamp three teardrop baubles onto pink card using Sweet Sugarplum ink. Die-cut the baubles.

3 Squeeze small pearls of glue onto the holly berries on each bauble and sprinkle with glitter. Add a light brown hanger to the top of each bauble.

4 Position two baubles directly onto the white card on the card front at different heights. Add the third slightly higher using foam pads to create dimension.

5 Add white bakers twine to the hangers and tie with a bow at the top of the white card. Fix the bows in place using a glue dot or small amount of wet glue.

6 Stamp the sentiment using Soft Suede ink onto a 5x2cm piece of white card. Lightly sponge the edges, then mount onto a 3.5x6cm piece of pink card. Fix to the bottom right of the card front using foam pads.



What do I need?

For all cards

- ☐ Embellished Ornaments stamp set and Delicate Ornaments Thinlits dies by Stampin' Up!
- ☐ Pink, white and brown card
- ☐ Sweet Sugarplum and Soft Suede inkpads by Stampin' Up!
- ☐ Clear embossing powder
- ☐ Die-cutting machine

Three baubles

All items above plus:

- ☐ White bakers twine
- ☐ Glitter

Where can I buy it?

Stampin' Up! products
available from your local demonstrators.
Visit www.2.stampinup.com to find your local one.

One bauble

1 Create a 14cm square card blank from brown card.

2 Cut a 13cm square of pink card and sponge the edges with Sweet Sugarplum ink.

3 Stamp a circle of holly in the centre of the pink square using brown ink, slightly larger than the size of the bauble. Colour the holly leaves using a pink marker. Squeeze small pearls of glue onto the holly berries and sprinkle with glitter.

4 Die-cut the bauble from white card and sponge the edges with Sweet Sugarplum ink. Add a brown die-cut hanger to the top.

5 Stamp the sentiment onto the bauble using Soft Suede ink. Sprinkle with clear embossing powder and add heat to emboss. Decorate the top of the bauble with pink ribbon, then fix to the centre of the holly circle using foam pads.

6 Finish by attaching the pink square to the centre of the card front.



What do I need?

One bauble

All items at start plus:

- ☐ Sweet Sugarplum marker by Stampin Up!
- ☐ Glitter
- ☐ Pink organza ribbon

What do I need?

Two baubles

All items at start plus:

- ☐ White Perfect Accents by Stampin Up!
- ☐ White gel pen
- ☐ White bakers twine

Two baubles

1 Create a 21x12cm card blank from pink card with the fold at the top.

2 Drag the Sweet Sugarplum inkpad over a craft mat and spritz the ink with water. Place a 20x11cm piece of white card onto the ink and rub the back of the card to create a watercolour effect. Allow the card to dry.

3 Dab a deep border of sponged Soft Suede ink to the edges of the card. When dry, fix to the centre of the card front.

4 Die-cut two solid and two fancy baubles from pink and brown card. Layer the alternate colours together to form two baubles. Add a white die-cut hanger to the top of each bauble and decorate with white bakers twine.

5 Position the baubles on the left of the card at different heights. Use foam pads to attach one bauble and stick the other bauble directly to the card.

6 Use white Perfect Accents along the top of the card approximately 1cm apart and link them together using a white gel pen.

7 Stamp the sentiment using Soft Suede ink onto a 5.5x3cm piece of white card. Sprinkle with clear embossing powder and add heat to set. Ink the edges with the same colour and fix to the bottom right of the card using foam pads. Finish by attaching the card to the card front.





Dean Wilson

Originally from Surrey, Dean lives in Lincolnshire with his partner and two boys, Jack 19 and George 4 ("I know!" he says!) with whom he has just celebrated his 50th birthday! Dean previously owned his own furniture and gift business and has sold everything from financial services to windscreens to office equipment but now presents on popular craft channel Create and Craft.

How did you end up becoming a presenter?

A friend called from London one day saying they were auditioning downstairs in his building for presenters with no experience and I should get there. I always wanted to present and so rushed down there. I was successful and my first job was presenting the weather on Sky TV – not bad going.

What do you love about presenting on Create and Craft?

I love the fun, the laughs, the unpredictability and the all the people – both in front and behind the camera, we're a great team.

Tell us more about the shows you present?

I present all types of craft shows, papercraft, jewellery making etc, all completely live and at different times of the day. I try to entertain as well as educate if I can. I think of myself as a 'presenter-tainer', self-titled of course!

Do you get nervous?

Very rarely as I've done this for over 20 years now. I'm pretty well prepped and have a great team around me.

Are you crafty?

A bit. I like to mess about with paint and furniture, but mostly getting crafty with my son George who loves glue and paint as most 4 years olds do.

Do you have a favourite craft?

I do like electronic crafting, but I do also secretly love a bit of sewing (shh, don't tell anyone!).

Any crafting disasters / funny stories?

I'll just say Pollyanna Pickering dancing, and also Sheila Halliwell and the wet wipes: I can't say anyone, if you want to know you'll have to check out YouTube!

Is there a particular craft brand you would say stands out as your favourite?

I don't have favourites as they all bring something different to the shows.

Is there another presenter you admire and for what reason?

I admire Bruce Forsyth for his way with people and also Michael Parkinson for the way he manages to get guests to talk and talk.

What do you do in your spare time?

I like to play golf, I love messing about in my man cave, DIY and of course having adventures with George.

Tune in to watch Dean on Create and Craft TV tune in to Sky 674 Freeview 23 Virgin 748 Freesat 813 or find out more at www.createandcraft.tv/





DESIGNED BY
CLARE BROWN

Cityscapes on different shapes!

"I love creating different shaped cards that leap out in front of you - and these designs certainly do just that! A box card, a 'Z' fold and a card using acetate have been used to add dimension to these stamped cityscapes!" *Clare*

Pop-up box

1 Cut black card to measure 30.5x16.5cm. Score at 7cm, 14cm, 21cm and 28cm along the long side. Measure 7cm down the short side and score. Cut down the 7cm score line to create flaps. Create a 2.5cm tab by cutting up at an angle towards the 28cm score line (Picture A).

2 Cut star paper to measure 6.3x17.1cm and fix to the panel to the left of the tab. Measure and cut three paper panels to 7cm square from the Happy Moments text paper and fix in the centre of each square section (Picture B).

What do I need?

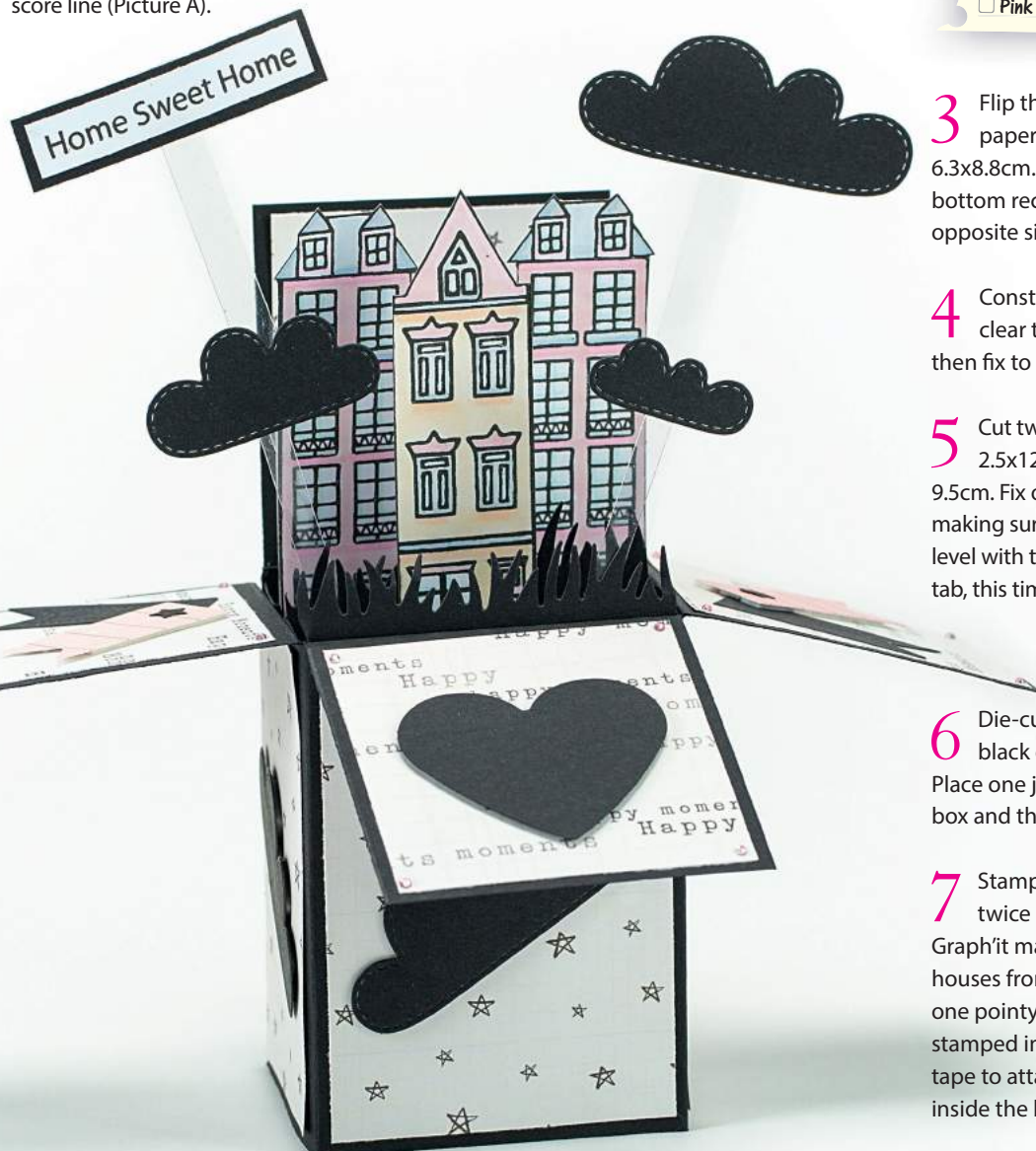
For all cards

- ☐ Black and white card
- ☐ Grass border die and Cloud die by Lawn Fawn
- ☐ Houses in a row stamp by Jaine Drake
- ☐ Onyx Black VersaFine inkpad
- ☐ Almond (4110) Cotton (4115) Silk (5110) Satin (5115) Antarctic (7210) Cool grey (9100) Cool grey 1 (9101) Graph'it alcohol marker pens

Pop-up box

All items above plus:

- ☐ Acetate
- ☐ Pink adhesive gems



3 Flip the card base over. Cut three paper panels from star paper to 6.3x8.8cm. Fix the paper pieces to the bottom rectangle sections, starting at the opposite side from the tab (Picture C).

4 Construct the box by adding strong clear tape to the outside of the tab, then fix to the inside of the box (Picture D).

5 Cut two strips of black card measuring 2.5x12cm. Score and fold at 2.5cm and 9.5cm. Fix one set of tabs inside the box making sure the tabs face the front and is level with the box. Repeat with the second tab, this time facing the back of the box.

6 Die-cut three grass borders from black card, measuring 7cm long. Place one just behind the front of the box and the other two on each of the tabs.

7 Stamp the houses in a row image twice on white card. Colour using Graph'it markers. Cut two flat roof top houses from one stamped image and one pointy roof house from the second stamped image. Trim to size and use foam tape to attach the houses to the tabs inside the box.

Step by steps



8 Die-cut one large, one medium and one small cloud from black card. Create three acetate strips in various lengths. Fix the acetate to the back of the clouds then attach to the tabs on the inside of the box.

9 Stamp the 'Home sweet home' sentiment onto white card and trim to size. Mount on black card and fix to a tab on the inside of the box by creating another acetate strip.

10 Draw and cut out a large heart from black card. Fix to the front flap using foam pads.

11 Draw and cut out four flag shapes, two from black card and two from pink patterned paper. Cut out a small star from black card and fix to the top of the pink flags. Layer the pink flag on top of the black flag on the left and right square flaps. Attach a pink adhesive gem to each of the four corners of the flaps.

12 Die-cut three large clouds from black card and fix to the outside of the box.

Z fold

1 Cut black card to 28.8x14.4cm. Score and mountain fold at 7.2cm, then score and valley fold at 14.4cm along the long side. This creates your 'Z' fold card blank.

2 Cut a piece of 'Happy moments' paper measuring 14cm square and fix to the centre of the right panel. Cut two pieces of

star paper measuring 14x6cm and fix centrally to the remaining panels.

3 Cut black card to 3x28.8cm. Score at 14.4cm and 21.6cm from the left, then mountain fold the first score line and valley fold the second. Measure and cut the reverse side of the 'Happy moments' text

What do I need?

Z fold

All items at start plus:

- ☐ Georgian town house stamp by Jaine Drake
- ☐ Clear adhesive gems

paper to 14x2.5cm square and fix to the left panel. Cut two pieces measuring 2.5x6.7cm and fix to the remaining panels. Fix the strip 2cm from the bottom of the card, so it bends and folds with the card.



4 Die-cut three grass borders from black card, one measuring 14.4cm and two measuring 7.2cm long. Fix the borders to the bottom of the decorative strip. Add a clear adhesive gem to the top corners of the patterned paper, above the grass border.

5 Stamp the houses in a row image and two of the Georgian town house stamp image onto white card using black ink. Colour using Graph'it alcohol markers.

Trim each image to size and fix to each panel of the strip.

6 Stamp 'Home sweet home' on white card and trim to measure 1x5.5cm. Mount on black card measuring 1.5x6cm. Fix to the top of the middle panel using foam pads.

7 Die-cut one large cloud, three medium clouds and four small clouds from black card. Fix to each panel of the card using foam pads.



Acetate

1 Cut black card to measure 14.5x13cm. Score and fold along the long side at 1cm, 4cm, 7cm and 10cm. Valley fold the 1cm and 7cm score lines, then mountain fold the 4cm and 10cm score lines.

2 Cut two strips of pink patterned paper measuring 2.5x14cm and fix to the front and middle steps. Die-cut two grass borders measuring 14.5cm long from black card and fix along the bottom of the pink patterned paper.

3 Cut a 14.5cm square from black card. Cut a 14cm square from star paper and fix to the centre of the black card. Die-cut a grass border from black card measuring 14.5cm long and fix along the bottom of the panel.

4 Stamp three Georgian town houses on white card and colour using Graph'it markers. Trim to size and fix to the bottom of the panel using foam pads.



What do I need?

Acetate

All items at start plus:

- ☐ Notepad die by Tim Holtz
- ☐ Flower die by Craft Asylum
- ☐ Winter Dawn Mega Flakes by IndigoBlu

5 Die-cut one large cloud and one medium cloud from black card. Fix above the houses using foam pads. Attach the panel to the bottom part of the card base using the 1cm flap at the back.

6 Stamp the houses in a row image on white card and colour using Graph'it markers. Trim to size and fix to the middle step of the card base using foam pads.

7 Stamp the 'Home sweet home' sentiment on white card and trim to 1x5.5cm. Mount onto black card measuring 1.5x6cm. Fix to the front of the card base using foam pads. Add a clear adhesive gem to the top corners above the grass borders and the two top corners at the back of the card base.

8 Cut a piece of acetate measuring 14.5x19cm. Score and mountain fold at 1cm and 18cm. Attach strong double-sided tape to each of the flaps at either end. Tuck and secure one end of the acetate behind the front of the card base and the other behind the top at the back of the card base. Cut a second 14.5cm square piece of black card and fix this to the back of the card to conceal the flap on the acetate.

Where can I buy it?

Lawn Fawn dies available from www.sevenhillscraft.co.uk.

Jaine Drake stamps available from www.basementstudio.lu.

Graph'it marker pens available from www.premiumartbrands.co.uk.

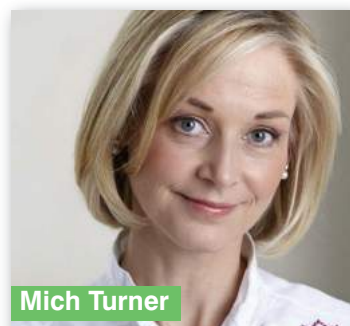
Watch Learn and Craft



Dean Wilson



Stephanie Weightman



Mich Turner



Matt Chappie



Pollyanna Pickering



Joanna Sheen



Stuart Hillard



Mel Heaton



Mark Tilling



Wendy Turner
Julie Peasgood

with Industry
Experts



Sky 674, Freeview 23
Freesat 813, Virgin 748

www.createandcraft.tv

Tune in for destination hours showcasing the crafts you love!

Tuesday 6pm

Create something magical with Disney



Wednesday 8pm

Learn from the best with an hour of cardmaking techniques



Saturday 2pm

Sit back and be inspired to create something sew special



Sunday 5pm

Create a stir with our baking experts



The Original and Multi-Award Winning TV Craft Channel
Sky 674 • Freeview 23 • Freesat 813 • Virgin 748



DESIGNED BY
FRANCESCA VIGNOLI

Quick sentiments



"Traditional Christmas colours are perfect to create cosy and festive cards.

I hope you enjoy my holly jolly ones that are ideal for quick makes!" *francesca*

Tis the season

- 1 Create an 11.4x8.2cm white card blank with the fold at the top.
- 2 Die-cut a Stitched Rectangle the same size as the card front from white card and two slightly smaller rectangles using the Wonky Stitches dies.

What do I need?

For all cards

- ☐ White card
- ☐ Large Stitched Rectangle dies by Lawn Fawn
- ☐ Fa La La clear stamp set by Avery Elle
- ☐ Tuxedo Black Memento inkpad
- ☐ Abandoned Coral and Shabby Shutters Distress inkpads
- ☐ Guava and Jalapeno inkpads by Lawn Fawn

Tis the season

- All items above plus:
- ☐ Wonky Stitches Elle-ments dies by Avery Elle

- 3 Colour the largest rectangle with Shabby Shutters ink and one of the smaller ones with Abandoned Coral. Spray both pieces with water and when dry, fix the larger rectangle to the card front and the smaller one on top at an angle.

- 4 Use black ink to stamp the sentiment in the centre of the Abandoned Coral rectangle. Draw and cut out a small heart from white card, colour with Shabby Shutters ink and fix to the bottom right of the sentiment.

- 5 Stamp holly and berries randomly over the third white rectangle using Guava and Jalapeno inks. Create a frame by running it through your die-cutting machine with a smaller rectangle die in the centre. Fix the frame to the card front at an angle.

Where can I buy it?

All dies and the stamp sets available from
<http://www.makethedayspecial.co.uk/>



What do I need?

Merry Christmas to you

All items at start plus:

- ☐ Acetate

Merry Christmas to you

- 1 Cut three pieces of white card; two measuring 11.5x8.2cm and one measuring 9x5.7cm. Die-cut using the Stitched Rectangle dies.
- 2 Use black ink to stamp the sentiment from the 'Fa la la' stamp set in the centre of the smaller rectangle. Stamp holly leaves and berries randomly around the edges using Guava and Jalapeno inks.
- 3 Dab Abandoned Coral ink over one of the larger rectangles, applying more colour to the top and fading towards the bottom. Spray some water over the card and allow to dry.
- 4 Cut a strip of white card to measure 11.5x2.2 cm and colour with the Shabby Shutters ink.
- 5 Cut a piece of acetate to measure 11.5x10cm and score the shorter side at 8.2cm. Mountain fold the score line and stick this folded edge to the remaining white rectangle. Fix the inked rectangle on top of the white one. Fix the strip across the middle of the acetate and add the stamped sentiment on top to complete.

What do I need?

Noel

All items at start only

Noel

- 1 Create an 11.4x8.2cm white card blank with the fold at the top. Die-cut a Stitched Rectangle the same size as the card front. Colour the top half with Abandoned Coral ink and the bottom half with Shabby Shutters ink. Spray with water and once dry, fix to the card front.
- 2 Cut a piece of white card to 11.4x6.1cm. Insert each side into your die-cutting machine with the Stitched Rectangle die to achieve the stitched detail on every side.
- 3 Use black ink to stamp 'Noel' at the bottom of the white card. Stamp holly and berries randomly over the card using Guava and Jalapeno inks. Fix to the centre of the card front.
- 4 Draw and cut out a small heart from white card and colour with Abandoned Coral ink. Stick to the bottom right corner of the card front.

What do I need?

Fa la la

- ☐ Wonky Stitches Elle-ments dies by Avery Elle
- ☐ Acetate

Fa la la

- 1 Die-cut two Stitched Rectangles from white card measuring 11.5x8.2cm and three small Stitched Circle tags. Colour one rectangle and all the circle tags with Abandoned Coral ink. Spray with a little water.
- 2 Cut two strips of white card measuring 11.4x2cm and 11.4x5.2cm. Insert each edge into your die-cutting machine with the Stitched Rectangle die to achieve the stitched details on every side. Randomly stamp some holly and berries over the smaller strip using Guava and Jalapeno inks. Colour the larger strip with Shabby Shutters ink.
- 3 Use black ink to stamp one word from the sentiment on each circle tag. Fix them along the bottom of the larger strip using foam pads. Attach the smaller strip across the top of the circles.
- 4 Cut a piece of acetate to measure 11.5x10cm and score the shorter side at 8.2cm. Mountain fold the score line and fix the shorter folded edge to the large white rectangle from Step 1. Fix the inked large rectangle on top of the white one.
- 5 Finish by adding the decorated strip to the bottom of the acetate.



Craft Shop Directory

To advertise please contact Melanie Batterbee on 07795 963694

Cambridgeshire

Riverside Beads & Crafts
for all your craft & beading supplies
High Street, Deeping,
Pbors, PE6 8EB
Tel: 01778 344550
Open 7 days a week
www.riversidebeads.co.uk
www.riversidecrafts.co.uk

GraftonCrafts
KIMBOLTON
Ouse Road • Bilton Industrial Park
• PE28 0LP
Tel: 01480 862850
• CRAFT & CARD MAKING SUPPLIES •
Visit our showroom for Project Ideas
& Inspiration
Open Monday – Friday 10am – 3pm
Or Shop Online at
www.graftoncrafts.co.uk

Cheshire

CJ Crafts
44-46 Castle Street,
Edgeley, Stockport SK3 9AD
Tel: 0161 477 7027
Weekly workshops by Glynis
Parchment classes
by Manka Stott
50% off large number of
selected items
Stockists of • PI
• Graph-it markers and
Panpastels • Huge selection of
Spellbinders, Mananne Designs
and Sizzix! • Ranger
• Wools and accessories
Visit our website:
www.cjcardcraft.com

CRAFTERS CORNER
16 Raddle Wharf, Ellesmere Port,
Cheshire, CH65 4FY
Closed Mondays
0151 356 5315
Stamping, Decoupage,
Crafter's Companion, Creative
Expressions, Clarity Stamps,
IndigoBlu and much more.
Card making classes.
www.crafterscorner.co.uk

County Durham

Crafty Nook
Wide variety of well-known brands for your
card making needs
Free friendly advice for every customer
• Spellbinders • Grand Calibur
• Crafters Companion
Unit 27, Durham Indoor Market
Durham City DH1 3NJ
TELEPHONE 0191 374 0877
or 07540 829914
Open 9am-4.30 Mon to Sat.

Cumbria

Crafty Hobbies
54 Cavendish St,
Barrow-in-Furness
Cumbria LA14 1PZ
Don't forget to visit our web-
site for crafts, doll's house and
model railway
www.crafty-hobbies.co.uk

Derbyshire

Crafty Ways
Card Making • Scrapbooking • Patons Wool
Knitting • Promarkers stockist • Needles &
Patterns • Cross Stitch Kits • DMC Threads
Open: Mon-Sat 9am-5pm. Closed Wed
1 Moor Street, Spondon, Derby,
Derbyshire DE21 7EA
Tel: 01332 662724
www.craftyways.uk.com/

Hampshire

CRAFTSPOT
• Card making, scrapbooking,
rubber stamping and cross-stitch
• Wedding & jewellery-making supplies
• Speedy turnaround of order
• First class personal service
Visit our shop at Unit 2, The Chantry
Centre, Chantry Way, Andover SP10 1LX
or our website for great bargains
www.craftspot.co.uk

Hampshire

Emerald Crafts
14 High Street,
Lyndhurst, Hampshire,
SO43 7BD
The New Forest's leading
Papercraft retailer
02380 283199
www.emeraldcrafts.com

Rubbery Image Stamps and Stamping with a difference.

Combining the visual and unusual
for a complete image experience.
Broaden your stamping horizons!
Workshop and one to one classes
available. Mail order.
For info pack or if visiting,
please call first.
Tel: 023-92553027

Isle of Wight

14 Carisbrooke Rd (Top of High St)
Newport, Isle of Wight, PO30 1EL
Wightcat Crafts
Creative Crafts
Cardmaking
&
Probably the UK's largest
Parchment Specialist
www.wightcat.com
Tel: 01983 527525
Tues-Fri 10am-5pm ~ Sat 10am - 4pm
Online 24/7

Kent

SHARON'S CARD CRAFTS
MERIDIAN HOUSE, PARK ROAD, SWANLEY
KENT, BR8 8AH TEL: 01322 618511
ENQUIRIES@SHARONSCARDCRAFTS.CO.UK
FACEBOOK:SHARONSCARDCRAFTS
DEMONSTRATIONS
JOHN LOCKWOOD
THURSDAY 6TH OCTOBER
10.00 - 4.00
WEDNESDAY 9TH NOVEMBER
CHARITY DAY IN AID OF
ELLENORLIONS HOSPICES
Make and Take
Thursdays 10.00 - 5.00
OPEN MON - SAT - 9.30 - 5.00
FRIENDLY HELPFUL STAFF
DISABLED ACCESS AMPLE FREE PARKING

Norfolk

Noble Crafts
9-10 Market Row, Great
Yarmouth, Norfolk NR30 1PB
Tel: 01493 859068
www.noblecrafts.co.uk
See us on Facebook!
Debbi Moore, Hunkydory,
Pinflair and so much more!

Lincolnshire

The Craft Outlet Store
GREAT VALUE
CRAFT SHOP
up to 70% DISCOUNT on
branded crafting supplies!
Springfields Outlet
Shopping Centre
Spalding PE12 6EU
01775 72 22 49

See page 31 for
our latest
subs offer.

Nottinghamshire

Pear Tree Yard
Craft Shop & Therapy Clinic
Huge selection of Card-making and Scrapbooking
materials - Peel-offs from 25p, A4 card and paper
from 4p, envelopes from 2p, embellishments,
stickers, tools, beads, buttons, jewellery findings,
ribbons, braids, material and much, much more,
all at bargain prices!
New stock arriving every week!
Open to the public Monday-Saturday 9am - 5pm,
Open the 1st Sunday of every month 10am - 4pm.
Pear Tree Yard, 36 Station Road, Sandiacre, Notts
NG10 5AS (Just off M1 Junction 25)
Tel: 0115 949 7411
crafts@peartreeyard.co.uk
www.peartreeyard.co.uk

Stockist of
Gold Porcelain Craft Paste
Ranger Products
Pergamano Parchment Craft
Tattered Lace Dies
and lots of other essential
crafting tools and equipment
Craft-e-Liza
2a Newgate Lane
Mansfield
Notts NG18 2LP
01623 422689
www.craft-e-liza.co.uk
sales@craft-e-liza.co.uk

Suffolk

Papermaze
www.papermaze.co.uk
The Granary, Grange Farm,
Otley, Ipswich IP6 9NS
Tuesday, Wednesday, Friday
9.30am-3pm
Other times by appointment.
01473 892195

Sussex

Crafty Snippets
Unit 6 Laura House, Jengers Mead
Billinghurst, West Sussex RH14 9NZ
01403 784674
www.craftysnippets.co.uk
IndigoBlu, Marianne Designs, Masks,
Crafty Individuals, Graphic 45, Tim Holtz,
Woodware, Tattered Lace, Lavinia stamps,
Creative Expressions, Imagination stencils,
Chloe stamps and dies, craft kits,
paints and so much more!
Shop open 9am - 5pm Mon - Sat.
Classes every other Sat (AM)

**AMANDA'S
Hobbie Hideout**
126 High Street, Selsey,
West Sussex PO20 0QE
amandahaywood5@aol.com
Like us on [f](https://www.facebook.com/AmandasHobbieHideout) Amanda's Hobbie Hideout
We now stock the Clarity Groovi Board
CLASSES NOW ON
Wed 1-3pm, Sat 10am-2pm and 3-5pm
Call for more information 01243 607968

Wales

DANDIE CRAFTS
Products You Want
Brands You Trust
Classes, workshops
& free demonstrations
Unit D10-3 Main Avenue
(Next to NatWest)
Treforest Industrial Estate
Pontypridd CF37 5UR
Tel 01443 842785
Brand New Website
dandiecrafts.co.uk

Doodleso
We have a wide selection of products for
Card Making, Rubber Stamping,
Scrapbooking, Wedding Stationery
and Jewellery Making.
We also offer bespoke
Wedding Stationery
Workshops & Craft Club
8 Bastion Road, Prestatyn, LL19 7ES
E-mail: emma@doodleso.co.uk
Tel: 01745 887165
www.doodleso.co.uk

Bizzzyfingers
19A 1st Floor
Aberafan Shopping Centre
Port Talbot SA13 1PB
Cardmaking,
scrapbooking,
jewellery making and
parchment craft
Tel: 01639 892253

Don't forget to pick up
your next issue of
Making Cards on sale
Friday 4th November

Wiltshire

Once upon a Time...
Craft & Gift store
Rubber Stamping, Cardmaking,
Scrapbooking and Beading
Pergamano stockist
online at: www.itsoncuponetime.co.uk
• Gift Vouchers •
103 High Street, Cricklade, Wiltshire SN6 6AA
01793 759280

Craft Shop Directory

To advertise please contact Melanie Batterbee on 07795 963694

Cambridgeshire

Riverside Beads & Crafts
for all your craft & beading supplies
High Street, Deeping,
Pboro, PE6 8EB
Tel: 01778 344550
Open 7 days a week
www.riversidebeads.co.uk
www.riversidecrafts.co.uk

GraftonCrafts
KIMBOLTON
Ouse Road • Bilton Industrial Park
• PE28 0LP
Tel: 01480 862850
• CRAFT & CARD MAKING SUPPLIES •
Visit our showroom for Project Ideas
& Inspiration
Open Monday – Friday 10am – 3pm
Or Shop Online at
www.graftoncrafts.co.uk

Cheshire

CJ Crafts
44-46 Castle Street,
Edgeley, Stockport SK3 9AD
Tel: 0161 477 7027
Weekly workshops by Glynis
Parchment classes
by Manka Stott
50% off large number of
selected items
Stockists of • PI
• Graph-it markers and
Panpastels • Huge selection of
Spellbinders, Mananne Designs
and Sizzix! • Ranger
• Wools and accessories
Visit our website:
www.cjcardcraft.com

CRAFTERS CORNER
16 Raddle Wharf, Ellesmere Port,
Cheshire, CH65 4FY
Closed Mondays
0151 356 5315
Stamping, Decoupage,
Crafter's Companion, Creative
Expressions, Clarity Stamps,
IndigoBlu and much more.
Card making classes.
www.crafterscorner.co.uk

County Durham

Crafty Nook
Wide variety of well-known brands for your
card making needs
Free friendly advice for every customer
• Spellbind • Grand Calibur
• Crafters Companion
Unit 27, Durham Indoor Market
Durham City DH1 3NJ
TELEPHONE 0191 374 0877
or 07540 829914
Open 9am-4.30 Mon to Sat.

Cumbria

Crafty Hobbies
54 Cavendish St,
Barrow-in-Furness
Cumbria LA14 1PZ
Don't forget to visit our web-
site for crafts, doll's house and
model railway
www.crafty-hobbies.co.uk

Derbyshire

Crafty Ways
Card Making • Scrapbooking • Patons Wool
Knitting • Promarkers stockist • Needles &
Patterns • Cross Stitch Kits • DMC Threads
Open: Mon-Sat 9am-5pm. Closed Wed
1 Moor Street, Spondon, Derby,
Derbyshire DE21 7EA
Tel: 01332 662724
www.craftyways.uk.com/

Hampshire

CRAFTSPOT
• Card making, scrapbooking,
rubber stamping and cross-stitch
• Wedding & jewellery-making supplies
• Speedy turnaround of order
• First class personal service
Visit our shop at Unit 2, The Chantry
Centre, Chantry Way, Andover SP10 1LX
or our website for great bargains
www.craftspot.co.uk

Hampshire

Emerald Crafts
14 High Street,
Lyndhurst, Hampshire,
SO43 7BD
The New Forest's leading
Papercraft retailer
02380 283199
www.emeraldcrafts.com

Rubbery Image
Stamps and Stamping
with a difference.
Combining the visual and unusual
for a complete image experience.
Broaden your stamping horizons!
Workshop and one to one classes
available. Mail order.
For info pack or if visiting,
please call first.
Tel: 023-92553027

Isle of Wight

14 Carisbrooke Rd (Top of High St)
Newport, Isle of Wight, PO30 1EL
Wightcat Crafts
Creative Crafts
Cardmaking
&
Probably the UK's largest
Parchment Specialist
www.wightcat.com
Tel: 01983 527525
Tues-Fri 10am-5pm ~ Sat 10am - 4pm
Online 24/7

Kent

SHARON'S CARD CRAFTS
MERIDIAN HOUSE, PARK ROAD, SWANLEY
KENT, BR8 8AH TEL: 01322 618511
ENQUIRIES@SHARONSCARDCRAFTS.CO.UK
FACEBOOK:SHARONSCARDCRAFTS
DEMONSTRATIONS
JOHN LOCKWOOD
THURSDAY 6TH OCTOBER
10.00 - 4.00
WEDNESDAY 9TH NOVEMBER
CHARITY DAY IN AID OF
ELLENORLIONS HOSPICES
Make and Take
Thursdays 10.00 - 5.00
OPEN MON - SAT - 9.30 - 5.00
FRIENDLY HELPFUL STAFF
DISABLED ACCESS AMPLE FREE PARKING

Norfolk

Noble Crafts
9-10 Market Row, Great
Yarmouth, Norfolk NR30 1PB
Tel: 01493 859068
www.noblecrafts.co.uk
See us on Facebook!
Debbi Moore, Hunkydory,
Pinflair and so much more!

Lincolnshire

The Craft Outlet Store
GREAT VALUE
CRAFT SHOP
up to 70% DISCOUNT on
branded crafting supplies!
Springfields Outlet
Shopping Centre
Spalding PE12 6EU
01775 72 22 49

See page 31 for
our latest
subs offer.

Nottinghamshire

Pear Tree Yard
Craft Shop & Therapy Clinic
Huge selection of Card-making and Scrapbooking
materials - Peel-offs from 25p, A4 card and paper
from 4p, envelopes from 2p, embellishments,
stickers, tools, beads, buttons, jewellery findings,
ribbons, braids, material and much, much more,
all at bargain prices!
New stock arriving every week!
Open to the public Monday-Saturday 9am - 5pm,
Open the 1st Sunday of every month 10am - 4pm.
Pear Tree Yard, 36 Station Road, Sandiacre, Notts
NG10 5AS (Just off M1 Junction 25)
Tel: 0115 949 7411
crafts@peartreeyard.co.uk
www.peartreeyard.co.uk

Stockist of
Gold Porcelain Craft Paste
Ranger Products
Pergamano Parchment Craft
Tattered Lace Dies
and lots of other essential
crafting tools and equipment
Craft-e-Liza
2a Newgate Lane
Mansfield
Notts NG18 2LP
01623 422689
www.craft-e-liza.co.uk
sales@craft-e-liza.co.uk

Suffolk

Papermaze
www.papermaze.co.uk
The Granary, Grange Farm,
Otley, Ipswich IP6 9NS
Tuesday, Wednesday, Friday
9.30am-3pm
Other times by appointment.
01473 892195

Sussex

Crafty Snippets
Unit 6 Laura House, Jengers Mead
Billinghurst, West Sussex RH14 9NZ
01403 784674
www.craftysnippets.co.uk
IndigoBlu, Marianne Designs, Masks,
Crafty Individuals, Graphic 45, Tim Holtz,
Woodware, Tattered Lace, Lavinia stamps,
Creative Expressions, Imagination stencils,
Chloe stamps and dies, craft kits,
paints and so much more!
Shop open 9am - 5pm Mon - Sat.
Classes every other Sat (AM)

AMANDA'S Hobbie Hideout
126 High Street, Selsey,
West Sussex PO20 0QE
amandahaywood5@aol.com
Like us on [f](https://www.facebook.com/AmandasHobbieHideout) Amanda's Hobbie Hideout
We now stock the Clarity Groovi Board
CLASSES NOW ON
Wed 1-3pm, Sat 10am-2pm and 3-5pm
Call for more information 01243 607968

Wales

DANDIE CRAFTS
Products You Want
Brands You Trust
Classes, workshops
& free demonstrations
Unit D10-3 Main Avenue
(Next to NatWest)
Treforest Industrial Estate
Pontypridd CF37 5UR
Tel 01443 842785
Brand New Website
dandiecrafts.co.uk

Doodleso
We have a wide selection of products for
Card Making, Rubber Stamping,
Scrapbooking, Wedding Stationery
and Jewellery Making.
We also offer bespoke
Wedding Stationery
Workshops & Craft Club
8 Bastion Road, Prestatyn, LL19 7ES
E-mail: emma@doodleso.co.uk
Tel: 01745 887165
www.doodleso.co.uk

Bizzzyfingers
19A 1st Floor
Aberafan Shopping Centre
Port Talbot SA13 1PB
Cardmaking,
scrapbooking,
jewellery making and
parchment craft
Tel: 01639 892253

Don't forget to pick up
your next issue of
Making Cards on sale
Friday 4th November

Wiltshire

Once upon a Time...
Craft & Gift store
Rubber Stamping, Cardmaking,
Scrapbooking and Beading
Pergamano stockist
online at: www.itsoncuponetime.co.uk
• Gift Vouchers •
103 High Street, Cricklade, Wiltshire SN6 6AA
01793 759280

The Fruit Pixie Altered Arts
For something that little bit different
www.thefruitpixie.co.uk

my mums craft shop
Specialising in USA Stamping Brands
£2.00 flat rate for all UK orders. 01305 257912.
www.mymumscraftshop.co.uk

Creations By Rod
www.creations-by-rod.co.uk

Storage Inserts *New*
Designed for **IKEA KALLAX/EXPEDIT Cubes**

Available in 8 storage versions: A4/12" Paper, SU Lock-down Punches, SU Ink Pads, Copic Various Refills, Tim Holtz Distress Ink Pads, Ribbons, "Spellbinders" Cutting Dies, ProMarkers/Copics, etc.



Price each: £45.95 (inc **FREE** postage UK mainland) - 10% discount for orders of 3 or more!

Please visit my website (www.creations-by-rod.co.uk) for details of the current new "KK" range and for ordering and discount details. Payments are handled via PayPal.

If you'd like a catalogue with information on all my products, please send an A5 s.a.e. to: Creations By Rod, Dept MC, A7, East Northdown Farm, Margate, Kent CT9 3TS or call Rod in the workshop on 01843 603353 for more information!

Handmade Wooden Storage Solutions for Crafters **PayPal**

CraftCreations.com
CARD BLANKS, PEEL-OFF STICKERS, DÉCOUPAGE & MORE

One Stop Craft Shop
We specialise in cardmaking & scrapbooking supplies, and stock a wide range of products including paper & card, ink, stamps, embellishments, stencils, decoupage, paint & more.
Late night opening 'til 9pm on last Thursday of every month
1 Clarendon Drive, Wymshurst, Milton Keynes, MK8 8DA | www.onestopcraftshop.com | 01908 227081

www.makingcardsmagazine.com

www.needleworkgardencrafts.co.uk
Cross Stitch and Card Making

Wightcat www.wightcat.com
Wightcat Crafts
Tel: 01983 527525
www.wightcat.com
Everything you need for all your creative crafts

Blade Rubber Stamps
London's Rubber Stamp Store
12 Bury Place • London • WC1A 2JL
www.bladerubber.co.uk
020 7831 4123

Our wonderful shop is full of fabulous stamps and cardmaking products.

Make your cards unique with a custom made stamp.



We stock Tim Holtz, Judikins, Catslife Press, and many more!

Exciting classes every weekend!

Mon - Sat 10.30-6
Sun 11.30-4.30

Domino Crafts



7a Cleveland Street Wolverhampton
WV1 3HL Tel: 01902 428842
For all your Card Craft Supplies
Card Making Classes Every Monday & Friday
Next Demo Sunday 16th October 10 - 4
With John Lockwood

ALMOST SOLD OUT!



OVER 90 FREE & EXCLUSIVE DIGITAL & PRINTED CHRISTMAS CRAFT PAPERS

Available at **WHSmith** **Sainsbury's**
Digital edition available at www.makingcardschristmas.co.uk

 **The Fruit Pixie Altered Arts**
For something that little bit different
www.thefruitpixie.co.uk

 **Specialising in USA Stamping Brands**
£2.00 flat rate for all UK orders. 01305 257912.
www.mymumscraftshop.co.uk

Creations By Rod
www.creations-by-rod.co.uk

Storage Inserts 
Designed for **IKEA KALLAX/EXPEDIT Cubes**

Available in 8 storage versions: A4/12" Paper, SU Lock-down Punches, SU Ink Pads, Copic Various Refills, Tim Holtz Distress Ink Pads, Ribbons, "Spellbinders" Cutting Dies, ProMarkers/Copics, etc.



Price each: £45.95 (inc **FREE** postage UK mainland) - 10% discount for orders of 3 or more!

Please visit my website (www.creations-by-rod.co.uk) for details of the current new "KK" range and for ordering and discount details. Payments are handled via PayPal.
If you'd like a catalogue with information on all my products, please send an A5 s.a.e. to: Creations By Rod, Dept MC, A7, East Northdown Farm, Margate, Kent CT9 3TS or call Rod in the workshop on 01843 603353 for more information!

Handmade Wooden Storage Solutions for Crafters 

CraftCreations.com
CARD BLANKS, PEEL-OFF STICKERS, DÉCOUPAGE & MORE

One Stop Craft Shop

Showroom hours
Mon-Fri
10am-4pm

We specialise in cardmaking & scrapbooking supplies, and stock a wide range of products including paper & card, ink, stamps, embellishments, stencils, decoupage, paint & more.

Late night opening 'til 9pm on last Thursday of every month

1 Clarendon Drive, Wymshurst, Milton Keynes, MK8 8DA | www.onestopcraftshop.com | 01908 227081

www.makingcardsmagazine.com

 www.needleworkgarden crafts.co.uk
Cross Stitch and Card Making

Wightcat  www.wightcat.com

Wightcat Crafts
Tel: 01983 527525
www.wightcat.com
Everything you need for all your creative crafts

Blade Rubber Stamps
London's Rubber Stamp Store
12 Bury Place • London • WC1A 2JL
www.bladerubber.co.uk
020 7831 4123



Our wonderful shop is full of fabulous stamps and cardmaking products.

Make your cards unique with a custom made stamp.



We stock Tim Holtz, Judikins, Catslife Press, and many more!

Exciting classes every weekend!

Mon - Sat 10.30-6
Sun 11.30-4.30

Domino Crafts



7a Cleveland Street Wolverhampton
WV1 3HL Tel: 01902 428842

For all your Card Craft Supplies
Card Making Classes Every Monday & Friday

Next Demo Sunday 16th October 10 - 4
With John Lockwood

ALMOST SOLD OUT!



OVER 90 FREE & EXCLUSIVE DIGITAL & PRINTED CHRISTMAS CRAFT PAPERS

Available at **WHSmith** **Sainsbury's**

Digital edition available at www.makingcardschristmas.co.uk



DESIGNED BY
WENDY MARTIN

The night before Christmas



Check out this exclusive project using craft papers from the Making Cards Christmas Special. Available from your nearest WHSmith and Sainsbury's.

Best wishes

- 1 Using white card create a card blank measuring 13.5x17.5cm.
- 2 Trim white snowflake backing paper to 12.5x16.5cm, mount onto dark blue card measuring 13x17cm and fix to the card front.
- 3 Trim blue snowflake backing paper to 6x12cm, mount onto dark blue card measuring 6.5x12.5cm and fix in the top left corner of the card front.

What do I need?

For both cards

- ☐ Making Cards Christmas Special Craft Papers MCCS0216, MCCS2816
- ☐ White and dark blue card

Best wishes

All items above plus:

- ☐ Making Cards Christmas Special Craft Papers MCCS1416, MCCS2416
- ☐ Red and green card
- ☐ Best Wishes die by Elizabeth Craft Designs
- ☐ Holly & Berries die by All Occasions
- ☐ Red ribbon
- ☐ Scalloped edge scissors



- 4 Create a scalloped edge on the right edge of dark blue card using scissors or a punch and cut to the finished size of 7x17cm. Trim a piece of holly backing paper to 5.5x16.5cm and fix to the panel, 5mm from the left edge. Wrap red ribbon around the right edge of the paper, securing the ends behind before securing the panel to the right side of the card front.

- 5 Cut around the topper to leave a narrow border of white. Mount onto dark blue card and attach in the position shown using foam pads.

- 6 Secure a red bow to the top of the ribbon strip. Create a small tag shape in blue snowflake backing paper, mount onto dark blue card and tuck under the bow. Using the Holly & Berries die, punch two leaves in green and berries in red. Stick onto the tag.

- 7 Die-cut 'Best wishes' in dark blue card and fix in the position shown to finish.

Joy

- 1 Create a 14.5x19cm white card blank.
- 2 Trim holly backing paper to 13.5x18cm, mount onto dark blue card measuring 14x18.5cm and fix to the card front.
- 3 Cut blue snowflake backing paper to 13.5x4.5cm, mount onto dark blue card measuring 14x5cm and fix to the card front approx. 1.5cm from the bottom edge.
- 4 Cut white snowflake backing paper to 7x16.5cm and mount onto dark blue card measuring 7.5x17cm. Trim dark blue card to 17x1.5cm and fix near the left side of the panel. Wrap navy ribbon vertically around the panel, on top of the blue card and secure the ends behind. Fix the panel to the left side of the card front using foam pads.
- 5 Cut out the topper leaving a narrow border of white and mount onto a slightly larger piece of dark blue card. Fix in the position shown using different heights of foam pads to keep the panel even.



What do I need?

Joy

All items at start plus:

- ☐ Making Cards Christmas Craft Papers MCCS0416, MCCS2616
- ☐ Snowflake die by All Occasions
- ☐ D-Lites Holiday Sentiments die set by Spellbinders
- ☐ Clear adhesive gems
- ☐ Navy ribbon

- 6 Create a small tag in white and mount onto dark blue. Die-cut 'Joy' in dark blue and stick at the bottom of the tag. Secure the tag as shown.
- 7 Tie a bow in navy ribbon and fix at the top of the ribbon strip. Punch two snowflakes in white. Secure one to the bow and the other to the bottom right corner of the topper.
- 8 Stick a gem to the centre of each snowflake and three in a row at the bottom of the ribbon to finish.

We ♥ Shopping!

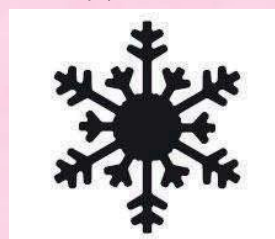
Alpine snowflake by McGill, £13.99
www.craftsulove.co.uk



Eline's Snowflake by Marianne Design Creatables, £10.49
www.papermaze.co.uk



Arctic Snowflake by Martha Stewart, £11.99
www.papermaze.co.uk



Mini Punch Snowflake by Woodware, £1.39
www.handyhippo.co.uk



Angular Snowflake Garland by EK Success, £18.99
www.craftie-charlie.co.uk



Wool 'n' Craft

136 Maidstone Road, Rainham,
Kent ME8 0DS

Cardmaking supplies from Craft Creations,
Pinflair, Le Pashe & Craft UK.
Fancy scarf yarns from Rico, Coats, SMC & Sirdar

**The Scrapbook Angel
Visits Monthly!**

Telephone 01634 231940

www.woolncraft.co.uk

sales@woolncraft.co.uk

Closed Tuesdays and bank holidays



Keep on Crafting

West Suffolk's best
independent craft retailer

Regular workshops covering:
Rubber Stamping, Jewellery and
Beading, Altered Art Media and
Scrapbooking and much more.



We stock products for Rubber Stamping, Papercrafting,
Scrapbooking and Beading.

Sizzix and Spellbinder Machines and dies from many
manufacturers. Papermill Direct partner, Fill a box now
available in store. Now stocking Paperartsy products.
Sign up for our workshops using their Eclectica Stamps
and Fresco Finish Paints

**New for 2016 - Bespoke workshops for craft groups. Book
your space on weekday afternoons and evenings and we
will provide the tutor and refreshments.**

All inclusive price from £10 pp



98a Risbygate St. Bury St Edmunds Suffolk IP33 3AA

Tel 01284 701101

Free P&P online at

www.keeponcrafting.co.uk

CARD MAKING WEEKEND BREAKS

in Blackpool

Marge & Terri invite you to a weekend
of Home From Home Card
making in Blackpool.

Share your ideas and learn new
techniques of Card making during a
fun filled weekend. Friday to Sunday.

**TURKEY &
TINSEL DATES:**
Friday 18th Nov -
Sun 20th Nov 16

Friday 25th Nov -
Sun 27th Nov 16

PLEASE PHONE FOR INFORMATION:

01253 623059/01253 625 065

Christmas Extravaganza
hosted by
Craft Box
the Hobby House

**Saturday 22nd
Sunday 23rd
October**

9.30am to 4.30/ 5pm
£40 per day £70 both days

Projects & Cards
with
Clare Rowlands
Julie Bennett
Karen Chase

www.e-crafts.co.uk
Suppliers of Cardmaking, Scrapbooking, Craft and Bridal Supplies

- General Craft Supplies
- Floral Products
- Card Embellishments
- Bridal Supplies
- Baby Embellishments
- Card & Paper supplies
- Seasonal Items
- Special Offers

Units B4/B5, Dudley Central Trading Estate, Shaw Road, Dudley, West Midlands DY28TP
Phone: 01844 230000 Mobile: 07751891754 Fax: 01844 235666 Email: sales@e-crafts.co.uk

HIBERNATING ANIMALS

LIMITED EDITION STAMPS COLLECTABLE



**DON'T
MISS
OUT!**

BC551
£16.95
+ £2.45 p&p

RESERVE YOUR COPY TODAY

CALL: 01303 278137

www.buckinghamcovers.com/makingcards1



Where are you going to do all of your Christmas Crafting?

Do you find that there are times when you have lots to do, and just want to sit in your favourite chair, and carry on with your favourite craft? Up to now, you may have found that difficult to manage, as you have had nowhere to put all your bits & pieces, or that they roll and fall off an ordinary flat tray?

Here's the solution you need!

The Lapdog Tray was designed by a Crafter - FOR CRAFTERS! it was created specifically with the wants and needs of all kinds of Crafters in mind.



A Lapdog "Craft Anywhere" Tray is wonderful for when you have cards, gifts or home decor items to make. Lightweight & portable, and now available with its own Tote Bag, it is ideal when you do want to sit on your most comfortable chair, or for when you're crafting away from home. It also has a very useful lid to cover your precious creations - overnight, when you take a break, or when small children & pets may cause havoc!

**Order the Lapdog & Bag together
for a Special Price of £99.99 or
3 payments of £33.33**

WITH FREE DELIVERY in the U.K.

To see our video, or to order, please visit:

www.lapdogtray.co.uk

Or call us on: 01524 33783





LR0441 Tiny's Log Cabin Die Set
Largest 82mm x 38mm
£7.99



£7.99



LR0442 Tiny's Reindeer Die
70mm x 75mm

Marianne
design

Delivery only
£2.49 per order



LR0444 Horizon Forest Die
130mm x 46mm



£8.99

LR0443 Austrian Village Die Set
Largest 62mm x 36mm



LR0445 Anja's Circle XL Die Set
Largest 135mm x 135mm
£19.99



CR1383 Punch Die - Spiders & Bugs Die
27 x 93mm
£4.99 Each

CR1384 Punch Die - Christmas Tree Ornaments Die
25 x 97mm



R1385 Christmas Tree Die Set
Largest 77mm x 54mm



£6.99



DF3429 Sparkles Embossing Folder
Size: 125mm x 125mm
£4.49



DF3430 Forrest Embossing Folder
Size: 125mm x 125mm
£4.49



VOTED HOT PRODUCT WINNER AT THE 2016 CHA AWARDS

PAPER CRAFTS Mini MISTI and Mega MISTI by My Sweet Petunia, Inc., have a simple hinge design that provides consistent stamping for novice or experienced crafters and a platform for multiple stamp techniques that are impossible with traditional stamping mounts. Both products accommodate both red rubber cling stamps and clear stamps.

This is the Most Incredible Stamp Tool Invented. MISTI's simple hinge design provides consistent stamping for the novice or experienced crafter. This tool will accommodate both the red rubber cling mount stamps or clear stamp. A foam pad is included with your MISTI to raise the cardstock when stamping with clear stamps. Your MISTI will provide a platform for multiple stamp techniques that are impossible with traditional stamp mounts. Use the two included magnets to quickly and easily position your cardstock, and the included grid paper makes it easy for you to layout and align your card's design.. Your MISTI is an investment you will treasure and enjoy, while saving you time and money while you make professional looking cards that reflect your creativity.



COL1413 Eline's Snowman Die Set
13x Dies
£12.99



COL1414 Eline's Husky Die Set
11x Dies
£11.99



COL1415 Eline's Sleigh & Flow Die Set
£10.99

Arthin Magnetic Storage Case

Each case will accommodate approximately (21) sheets when full. These stackable Magnetic Die Storage Cases are molded in ACID-FREE translucent polypropylene.

Magnetic Die Storage Case including (3) Magnetic Die Sheets.



Case measures
10 1/4" x 3 1/4" x 9 5/8"

Case £14.99

Additional custom-cut Magnetic Die Sheets (Set of 3)

Magnetic Die Sheets (3x) £7.99



Embossing Folder and Stencil Storage Case £16.99



Capable of storing up to 40 C6 embossing folders. Use C6 / A6 Flexible Magnets to store metal cutting and embossing stencils.

Cheery Lynn Crafters Tools

5 piece set, one ended tools for paper crafting are great for handling and placing, small paper pieces.

£6.99

Joy!Crafts XL Storage Case



£24.99

This Extra Large case will accommodate approximately (21) sheets when full. These stackable Magnetic Die Storage Cases are molded in ACID-FREE translucent polypropylene. The Magnetic Die Storage Case measures 29.5 x 40x 7.5 cm. Magnetic Die Storage Case including (3) Magnetic Die Sheets.



£13.99

Additional custom-cut XL Magnetic Die Sheets (Set of 3)

Spellbinders Tool 'n One



£10.99

Multiple craft function Tool, including piercing, paper removal and many more! In addition, it provides a unique storage solution. What is the solution? The Tool-n-One's attachments are housed within the "pod" of its main body.



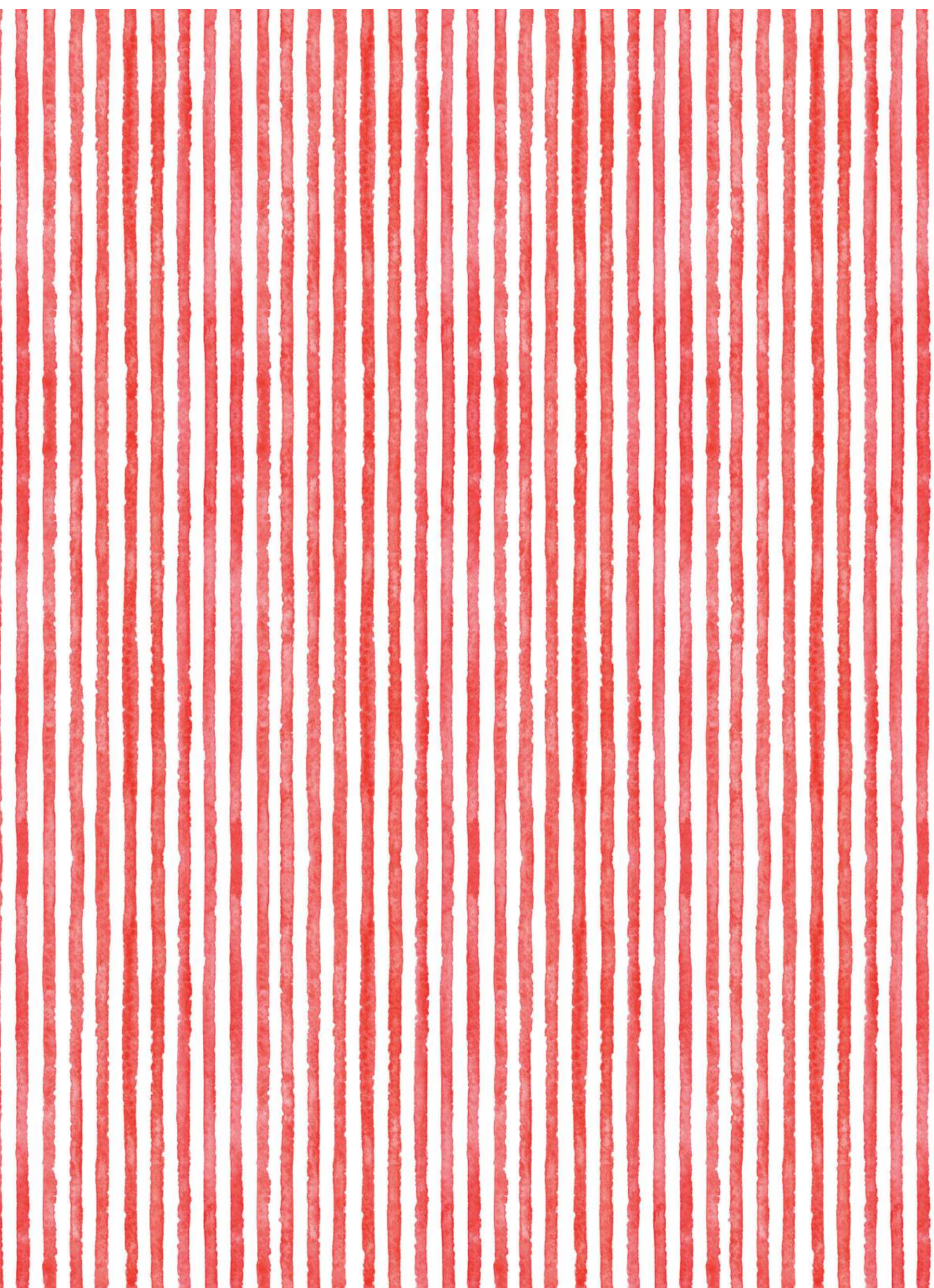
To order call 01293 863576 or go www.craftsulove.co.uk or send a cheque/postal order to: Crafts U Love Ltd, Unit 1 Westcoats Farm, Stan Hill, Charlwood, Surrey RH6 0ES.

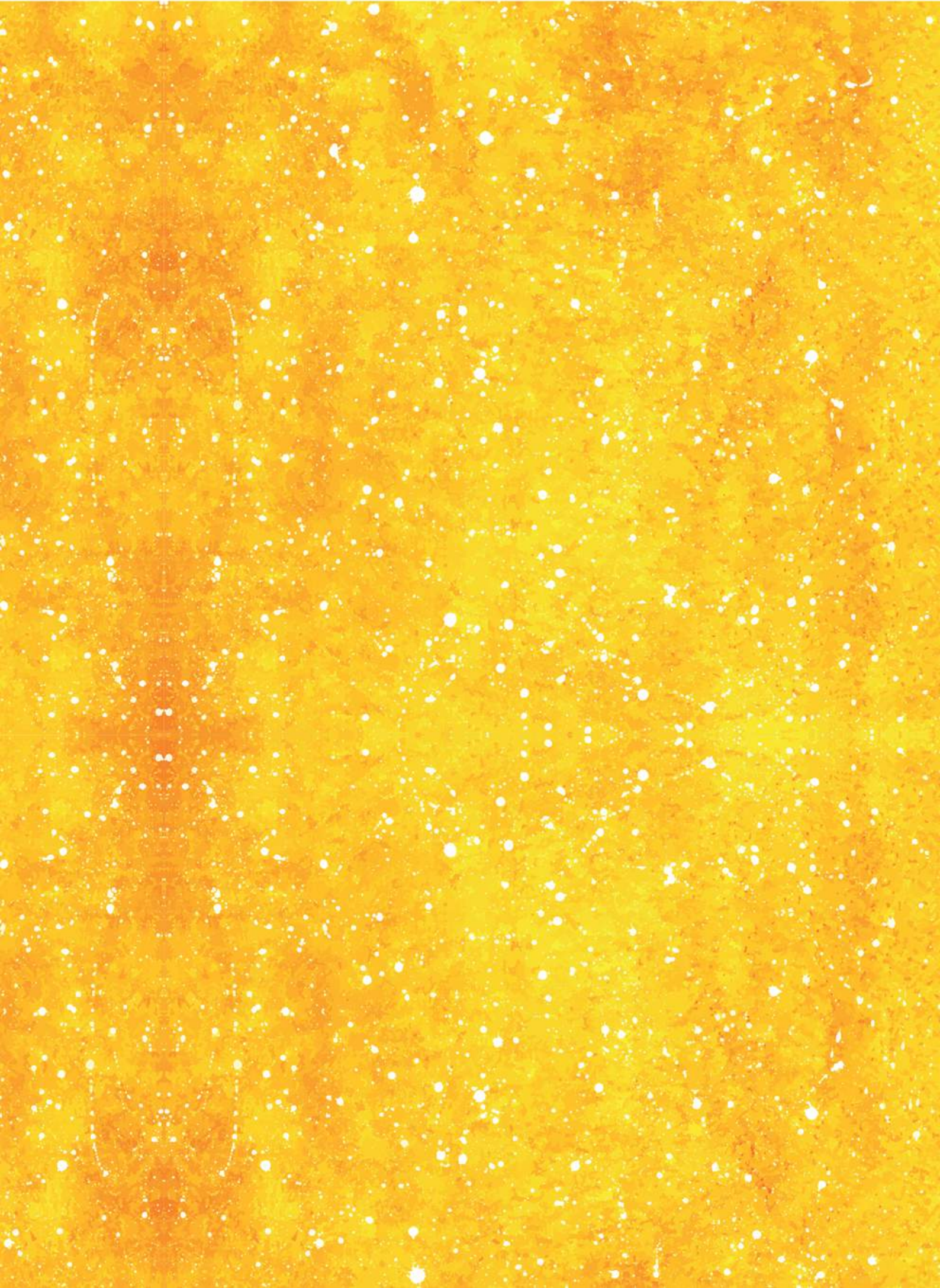


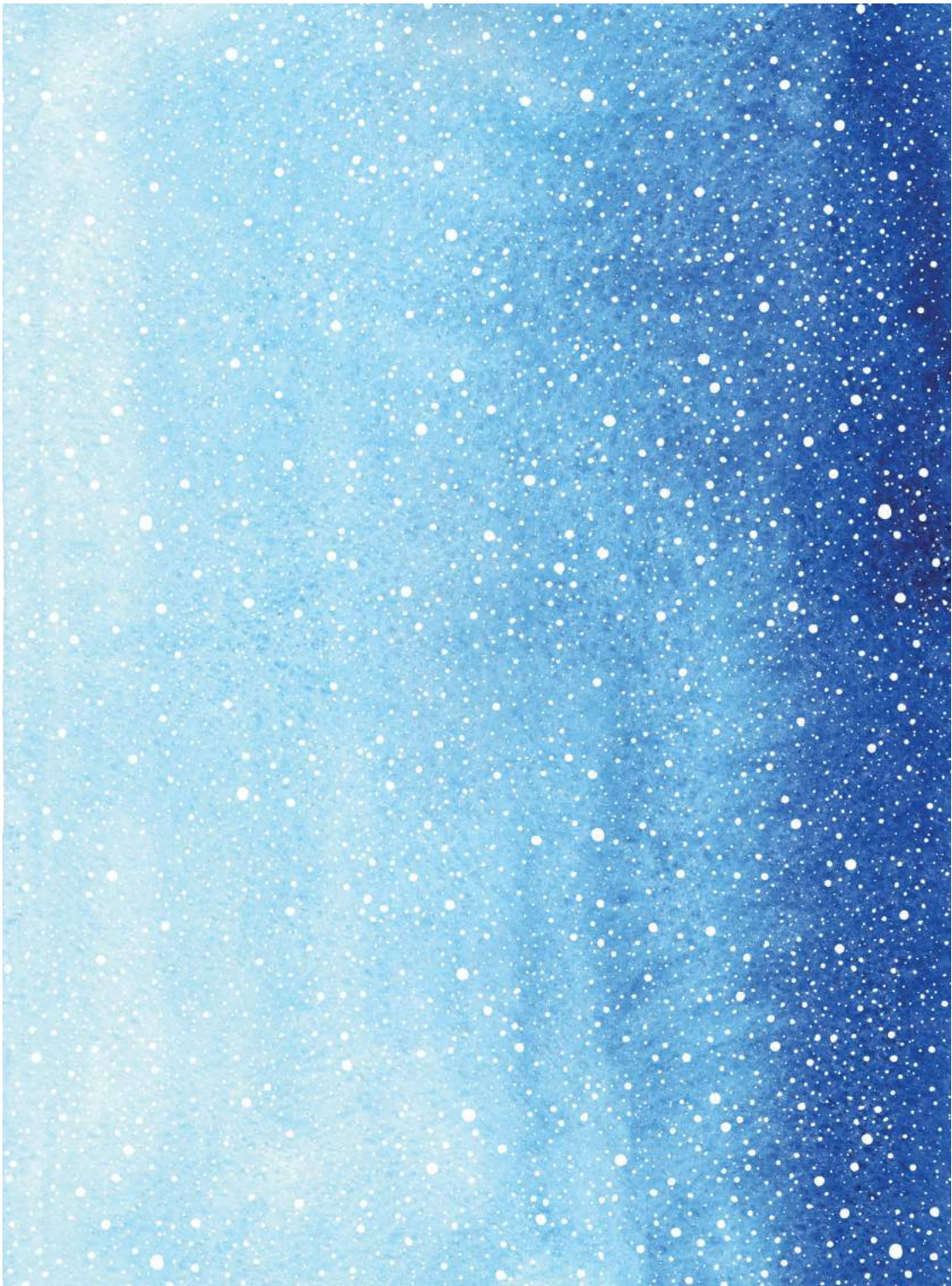














FIND
MORE
FREE
MAGAZINES

[HTTP://SOEK.IN](http://soek.in)



